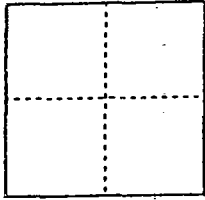


CORNER RECORD

Document Number 00-101
County of San Joaquin, California

City of _____

Brief Legal Description Santa Fe Road 2396'± Southeasterly of Hall Avenue per F.B. 658, pg. 36.



CORNER TYPE

Government Corner Control
Meander Property
Rancho Other
Date of Survey 10-04-99

COORDINATES (Optional)

N. _____
E. _____
Zone _____ NAD27 NAD83
NAD83 Epoch _____
Elev. _____
Vert. Datum: NGVD29 NAVD88
Meas. Units: Metric Imperial

Corner - Left as found Found and tagged Established Reestablished Rebuilt

Identification and type of corner found: Evidence used to identify or procedure used to establish or reestablish the corner:

See Sketch on Backside

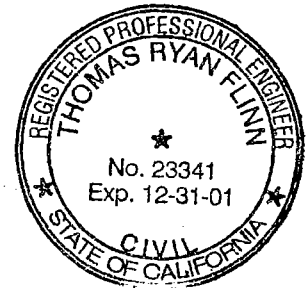
A description of the physical condition of the monument as found and as set or reset:

Found Monument in good condition.
See Sketch on Backside

SURVEYOR'S STATEMENT

This Corner Record was prepared by me or under my direction in conformance with the Land Surveyors' Act on Feb 11, 2000.

Signed _____ L.S. or R.C.E. Number 23341



COUNTY SURVEYOR'S STATEMENT

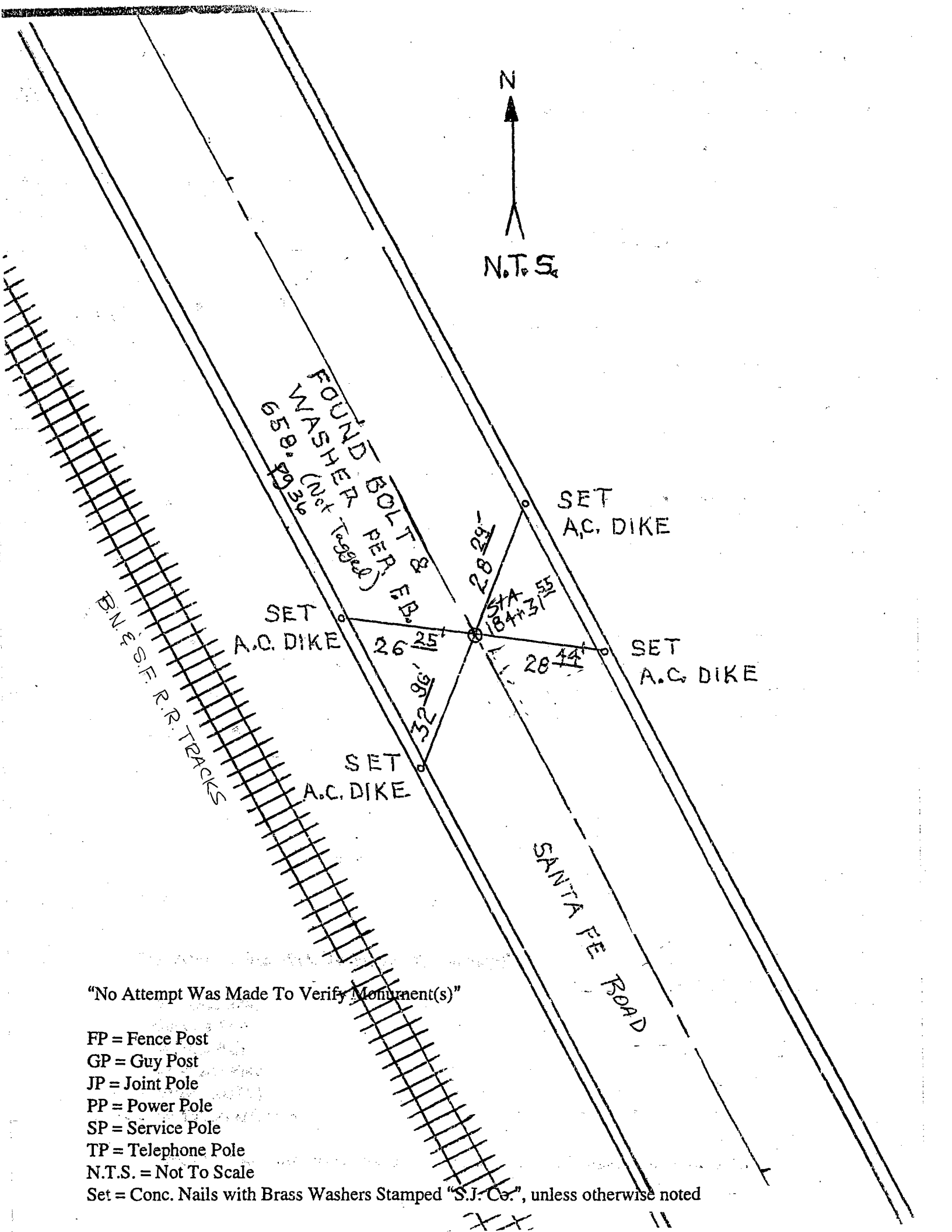
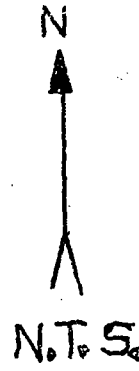
This Corner Record was received 2-15, 2000 and examined and filed 2-15, 2000.

Signed Henry M. Hirata R.C.E. No. 21258
Title County Surveyor



County Surveyors Comment _____

(D.D. Sheet No. 63)



FOUND BOLT PER F.P.
WASHER (Not Tagged)
658.7936

SET
A.C. DIKE

SET
A.C. DIKE

26' 25"

28' 29"

STA
184+31.55

SET
A.C. DIKE

28' 44"

SET
A.C. DIKE

32' 96"

SANTA FE ROAD

B.N. & S.F. R.R. TRACKS

"No Attempt Was Made To Verify Monument(s)"

- FP = Fence Post
- GP = Guy Post
- JP = Joint Pole
- PP = Power Pole
- SP = Service Pole
- TP = Telephone Pole
- N.T.S. = Not To Scale

Set = Conc. Nails with Brass Washers Stamped "S.J. Co.", unless otherwise noted