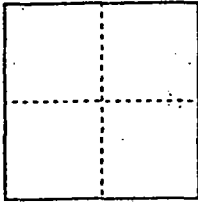


CORNER RECORD

Document Number 00-100
County of San Joaquin, California

City of _____

Brief Legal Description Intersection of Santa Fe Road and Henry Road per F.B. 658,
pg. 37.



CORNER TYPE

Government Corner Control
Meander Property
Rancho Other
Date of Survey 12-24-99

COORDINATES (Optional)

N. _____
E. _____
Zone _____ NAD27 NAD83
NAD83 Epoch _____
Elev. _____
Vert. Datum: NGVD29 NAVD88
Meas. Units: Metric Imperial

Corner - Left as found Found and tagged Established Reestablished _____ Rebuilt

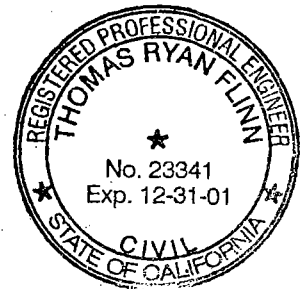
Identification and type of corner found: Evidence used to identify or procedure used to establish or reestablish the corner:
location of Fd. 3/4" Pin & Washer (Not Tagged) per F.B.
658, pg. 37 per Swingties on C.R. -00-99.
See sketch on Backside

A description of the physical condition of the monument as found and as set or reset: Fd. 3/4" Pin & Washer
(Not Tagged) per F.B. 658, pg. 37 in good condition and placed Mon. Box
over Monument.
See sketch on Backside

SURVEYOR'S STATEMENT

This Corner Record was prepared by me or under my direction in conformance with the Land Surveyors' Act on Feb 11, 2000

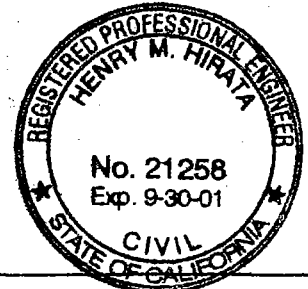
Signed _____ L.S. or R.C.E. Number 23341



COUNTY SURVEYOR'S STATEMENT

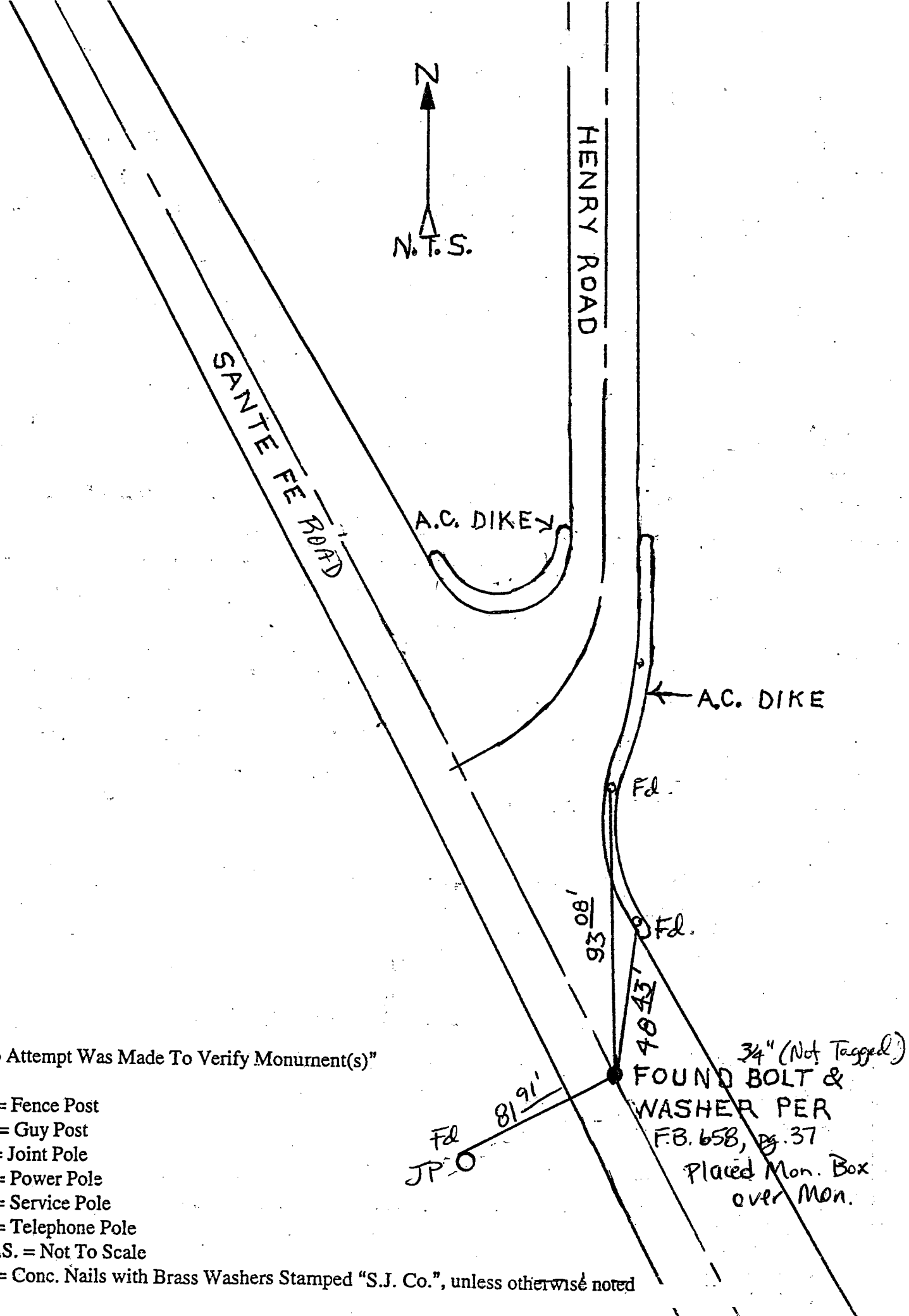
This Corner Record was received 2-15, 00 and examined and filed 2-15, 00.

Signed Henry M. Hirata R.C.E. No. 21258
Title County Surveyor



County Surveyors Comment _____

(D.D. Sheet No. 63)



"No Attempt Was Made To Verify Monument(s)"

- FP = Fence Post
- GP = Guy Post
- JP = Joint Pole
- PP = Power Pole
- SP = Service Pole
- TP = Telephone Pole
- N.T.S. = Not To Scale

Fd. = Conc. Nails with Brass Washers Stamped "S.J. Co.", unless otherwise noted

34" (Not Tagged)
 FOUND BOLT &
 WASHER PER
 F.B. 658, pg. 37
 Placed Mon. Box
 over Mon.