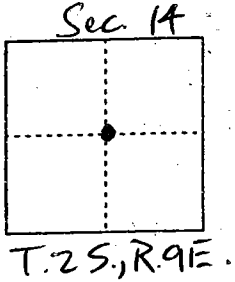


CORNER RECORD

Document Number 00-92  
County of San Joaquin, California

City of \_\_\_\_\_

Brief Legal Description Intersection of Santa Fe Road & River Road per F.B. 658, pg. 35; and  
Intersection of River Road & Seidner Ave. per PM-15-58 (SW Cor. of NE 1/4 of Sec. 14, T.2S, R.9E)



CORNER TYPE

Government Corner  Control   
Meander  Property   
Rancho  Other   
Date of Survey 12-13-99

COORDINATES (Optional)

N. \_\_\_\_\_  
E. \_\_\_\_\_  
Zone \_\_\_\_\_ NAD27  NAD83   
NAD83 Epoch \_\_\_\_\_  
Elev. \_\_\_\_\_  
Vert. Datum: NGVD29  NAVD88   
Meas. Units: Metric  Imperial

Corner - Left as found  Found and tagged  Established  Reestablished  Rebuilt

Identification and type of corner found: Evidence used to identify or procedure used to establish or reestablish the corner:  
Reestablished Fd. Spike & Washer (Not Tagged) per F.B. 658, pg. 35 per Swing Ties on  
C.R. 00-91. Reestablished Fd. Bolt & Washer (Not Tagged) per PM-15-58 on  
C.R. 00-91.

See Sketch on Backside

A description of the physical condition of the monument as found and as set or reset: Fd. Spike & Washer (Not Tagged)  
per F.B. 658, pg. 35 in good condition and placed Mon. Box over Monument.  
Fd. Bolt & Washer (Not Tagged) per PM-15-58 in good condition and placed  
Mon. Box over Monument.

See Sketch on Backside

SURVEYOR'S STATEMENT

This Corner Record was prepared by me or under my direction in conformance with  
the Land Surveyors' Act on Feb 11, 2000.

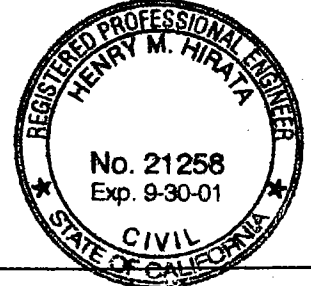
Signed [Signature] L.S. or R.C.E. Number 23341



COUNTY SURVEYOR'S STATEMENT

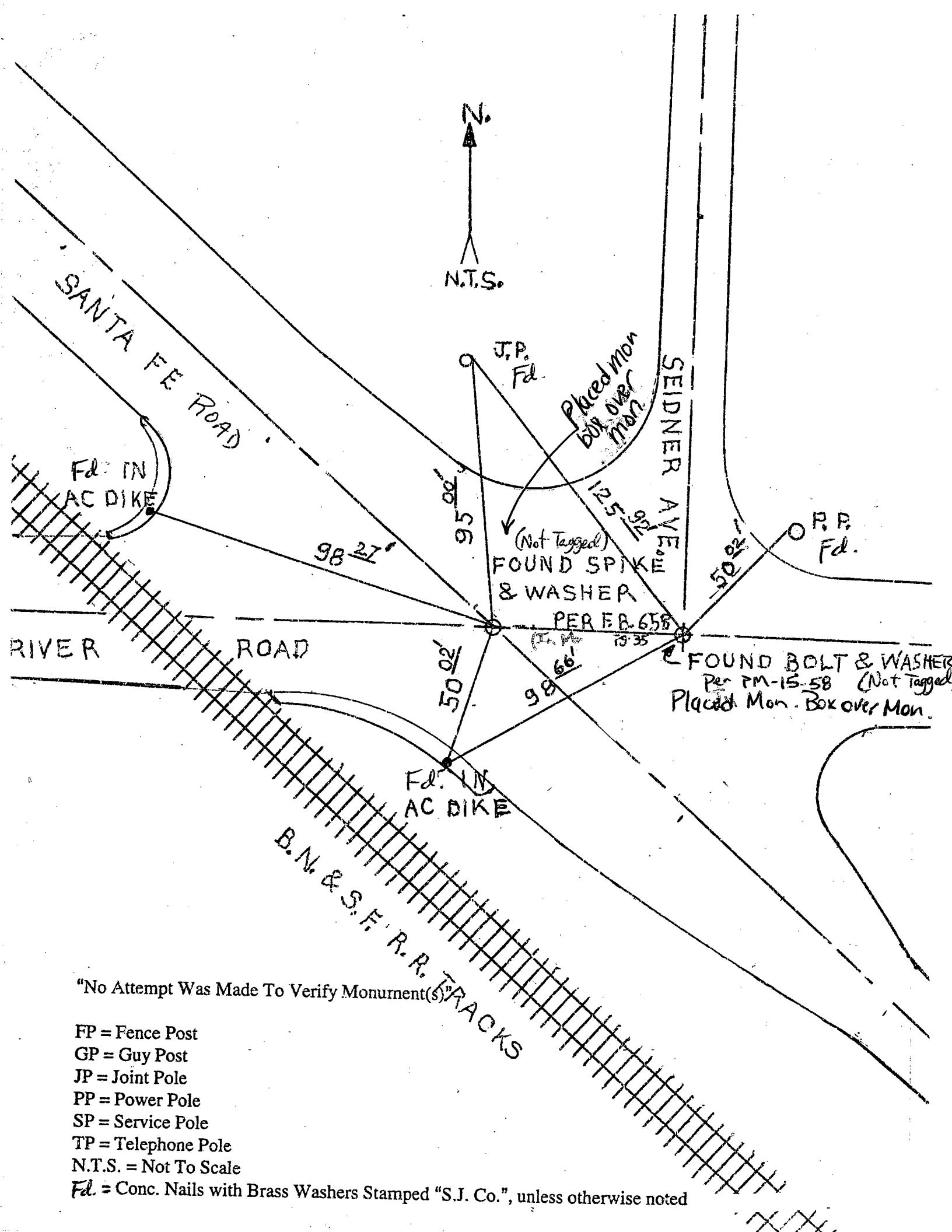
This Corner Record was received 2-15, 2000 and examined  
and filed 2-15, 2000.

Signed Henry M. Hirata R.C.E. No. 21258  
Title County Surveyor



County Surveyors Comment \_\_\_\_\_

(D.D. Sheet No. 63)



"No Attempt Was Made To Verify Monument(s)"

- FP = Fence Post
- GP = Guy Post
- JP = Joint Pole
- PP = Power Pole
- SP = Service Pole
- TP = Telephone Pole
- N.T.S. = Not To Scale
- Fd. = Conc. Nails with Brass Washers Stamped "S.J. Co.", unless otherwise noted