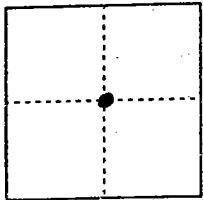


CORNER RECORD

Document Number 00-91
County of San Joaquin, California

City of _____

Brief Legal Description Intersection of Santa Fe Road and River Road per F.B. 158, pg. 35; and Intersection of River Road and Seidner Ave per PM-15-58. Sec. 14 (SW corner of NE 1/4 of section 14, T.25, R.9E.)



T.25, R.9E.

CORNER TYPE
Government Corner Control
Meander Property
Rancho Other
Date of Survey 10-04-99

COORDINATES (Optional)
N. _____
E. _____
Zone _____ NAD27 NAD83
NAD83 Epoch _____
Elev. _____
Vert. Datum: NGVD29 NAVD88
Meas. Units: Metric Imperial

Corner - Left as found Found and tagged Established Reestablished Rebuilt

Identification and type of corner found: Evidence used to identify or procedure used to establish or reestablish the corner:
See Sketch on Backside

A description of the physical condition of the monument as found and as set or reset:
Found Monuments in good condition - See Sketch on Backside

SURVEYOR'S STATEMENT

This Corner Record was prepared by me or under my direction in conformance with the Land Surveyors' Act on Feb 11, 2000.

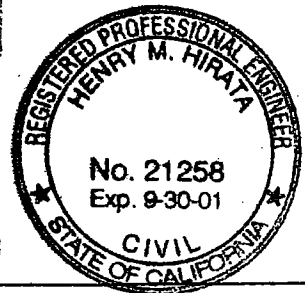
Signed [Signature] L.S. or R.C.E. Number 23341



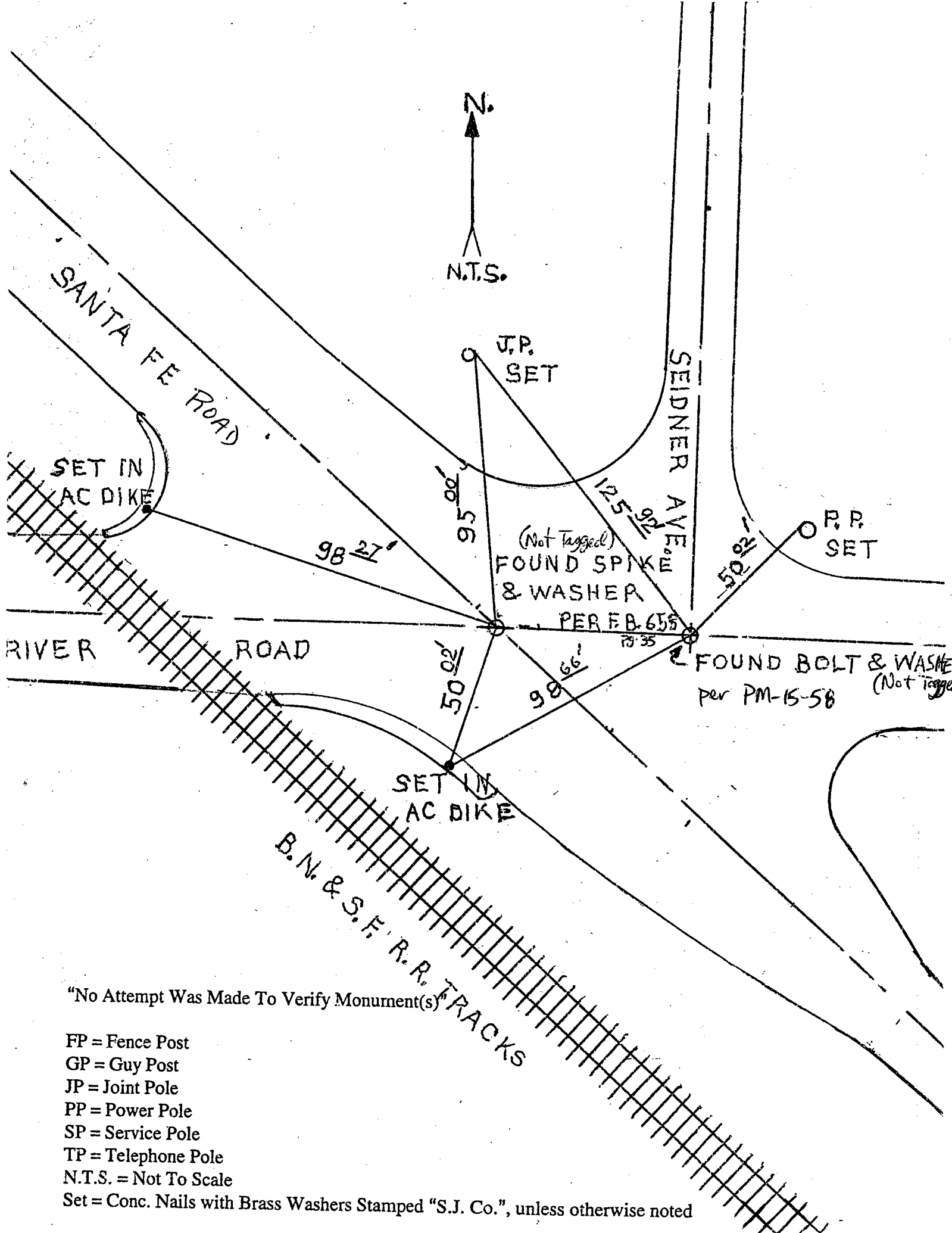
COUNTY SURVEYOR'S STATEMENT

This Corner Record was received 2-15, 2000 and examined and filed 2-15, 2000.

Signed Henry M. Hirata R.C.E. No. 21258
Title County Surveyor



County Surveyors Comment _____



"No Attempt Was Made To Verify Monument(s)"

- FP = Fence Post
- GP = Guy Post
- JP = Joint Pole
- PP = Power Pole
- SP = Service Pole
- TP = Telephone Pole
- N.T.S. = Not To Scale
- Set = Conc. Nails with Brass Washers Stamped "S.J. Co.", unless otherwise noted