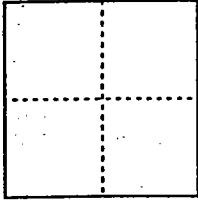


CORNER RECORD

Document Number 00-90
County of San Joaquin, California

City of _____

Brief Legal Description INTERSECTION OF MARIPOSA ROAD AND
DROGE ROAD per PS 28-11



CORNER TYPE

Government Corner Control
Meander Property
Rancho Other
Date of Survey 12-13-99

COORDINATES (Optional)

N. _____
E. _____
Zone _____ NAD27 NAD83
NAD83 Epoch _____
Elev. _____
Vert. Datum: NGVD29 NAVD88
Meas. Units: Metric Imperial

Corner - Left as found Found and tagged Established Reestablished _____ Rebuilt

Identification and type of corner found: Evidence used to identify or procedure used to establish or reestablish the corner:

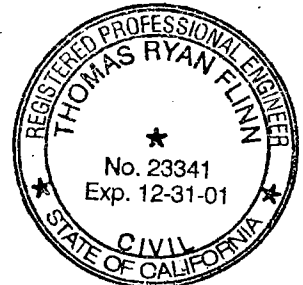
FOUND PK. NAIL (NOT TAGGED)
PER. SWING TIES ON C.R. - 00-53 (Not Tagged)
SEE SKETCH ON BACKSIDE.

A description of the physical condition of the monument as found and as set or reset: Replaced PK nail
with a 3/4" Rebar
Tagged with Brass Washer Stamped "S.J.Co." per Swings on C.R. - 00-53
and placed Mon Well over Monument.
See Sketch on Backside

SURVEYOR'S STATEMENT

This Corner Record was prepared by me or under my direction in conformance with the Land Surveyors' Act on Feb 11, 2000.

Signed _____ L.S. or R.C.E. Number 23341

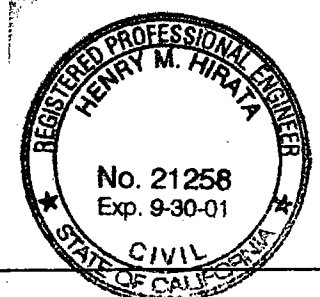


COUNTY SURVEYOR'S STATEMENT

This Corner Record was received 2-15, 00 and examined and filed 2-15, 00.

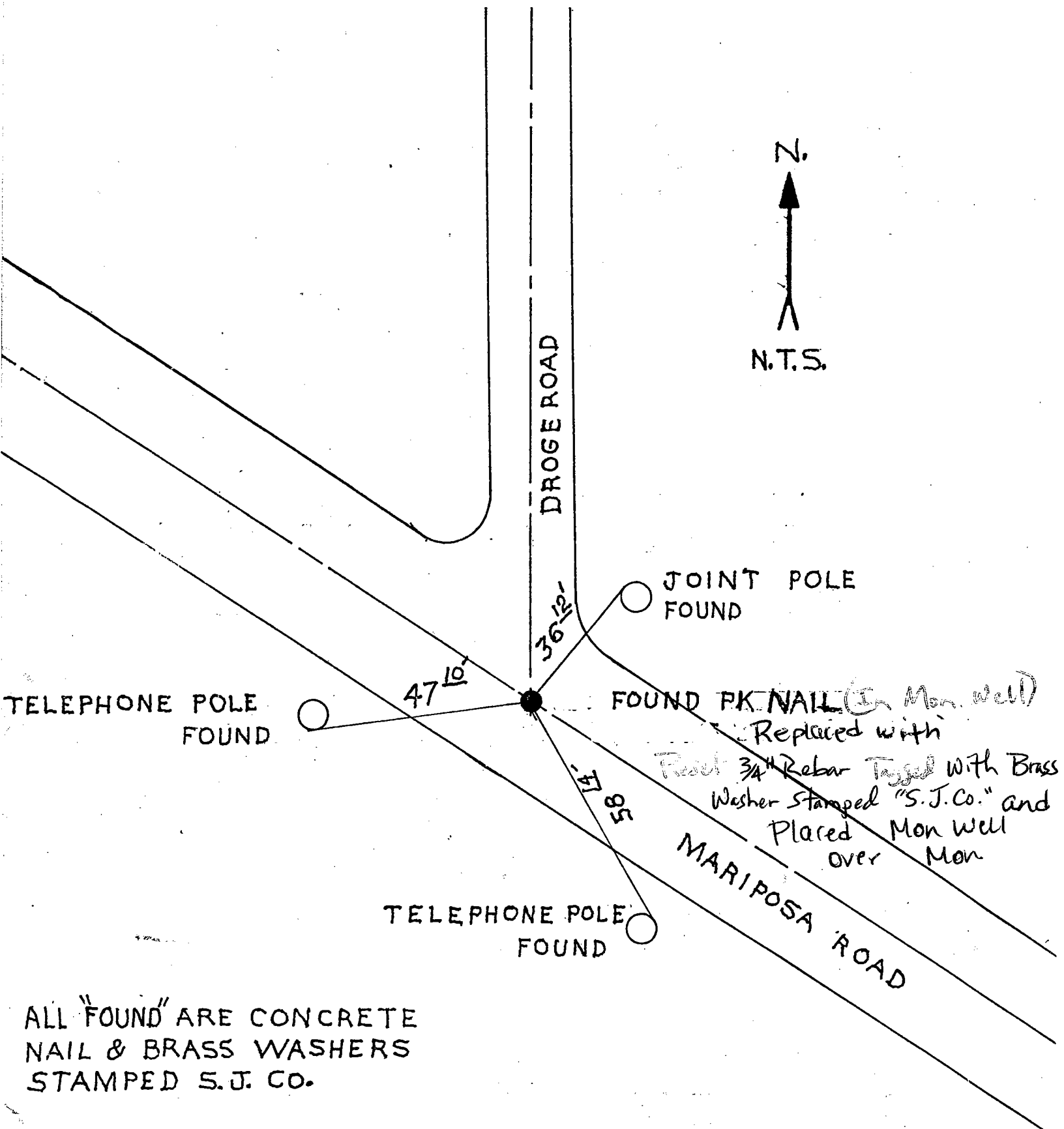
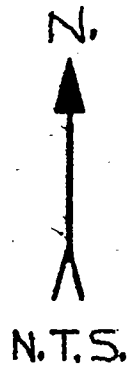
Signed Henry M. Hirata R.C.E. No. 21258

Title County Surveyor



County Surveyors Comment _____

(D.D. Sheet No. 43)



ALL "FOUND" ARE CONCRETE
NAIL & BRASS WASHERS
STAMPED S.J. CO.

"No attempt was made to verify Monument"