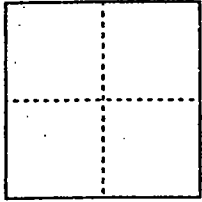


CORNER RECORD

Document Number 00-89
County of San Joaquin, California

City of _____

Brief Legal Description MARIPOSA ROAD 3,050' NORTHWESTERLY OF
DROGE ROAD per F.B. 504, Pg 18.



CORNER TYPE

Government Corner Control
Meander Property
Rancho Other
Date of Survey 12-30-99

COORDINATES (Optional)

N. _____
E. _____
Zone _____ NAD27 NAD83
NAD83 Epoch _____
Elev. _____
Vert. Datum: NGVD29 NAVD88
Meas. Units: Metric Imperial

Corner - Left as found Found and tagged Established Reestablished Rebuilt

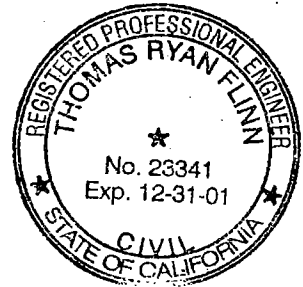
Identification and type of corner found: Evidence used to identify or procedure used to establish or reestablish the corner:
FOUND PIN & WASHER (NOT TAGGED)
PER FIELD BOOK 504, PG. 18.
PER SWING TIES ON C.R. 00-52
SEE SKETCH ON BACKSIDE.

A description of the physical condition of the monument as found and as set or reset: FOUND PIN &
WASHER (NOT TAGGED) IN GOOD
CONDITION AND PLACED MONUMENT WELL OVER THE
MONUMENT. SEE SKETCH ON BACKSIDE,

SURVEYOR'S STATEMENT

This Corner Record was prepared by me or under my direction in conformance with
the Land Surveyors' Act on Feb 11, 2000

Signed _____ L.S. or R.C.E. Number 23341

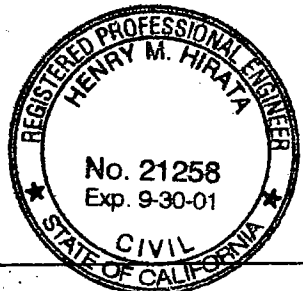


COUNTY SURVEYOR'S STATEMENT

This Corner Record was received 2-15, 2000 and examined
and filed 2-15, 2000

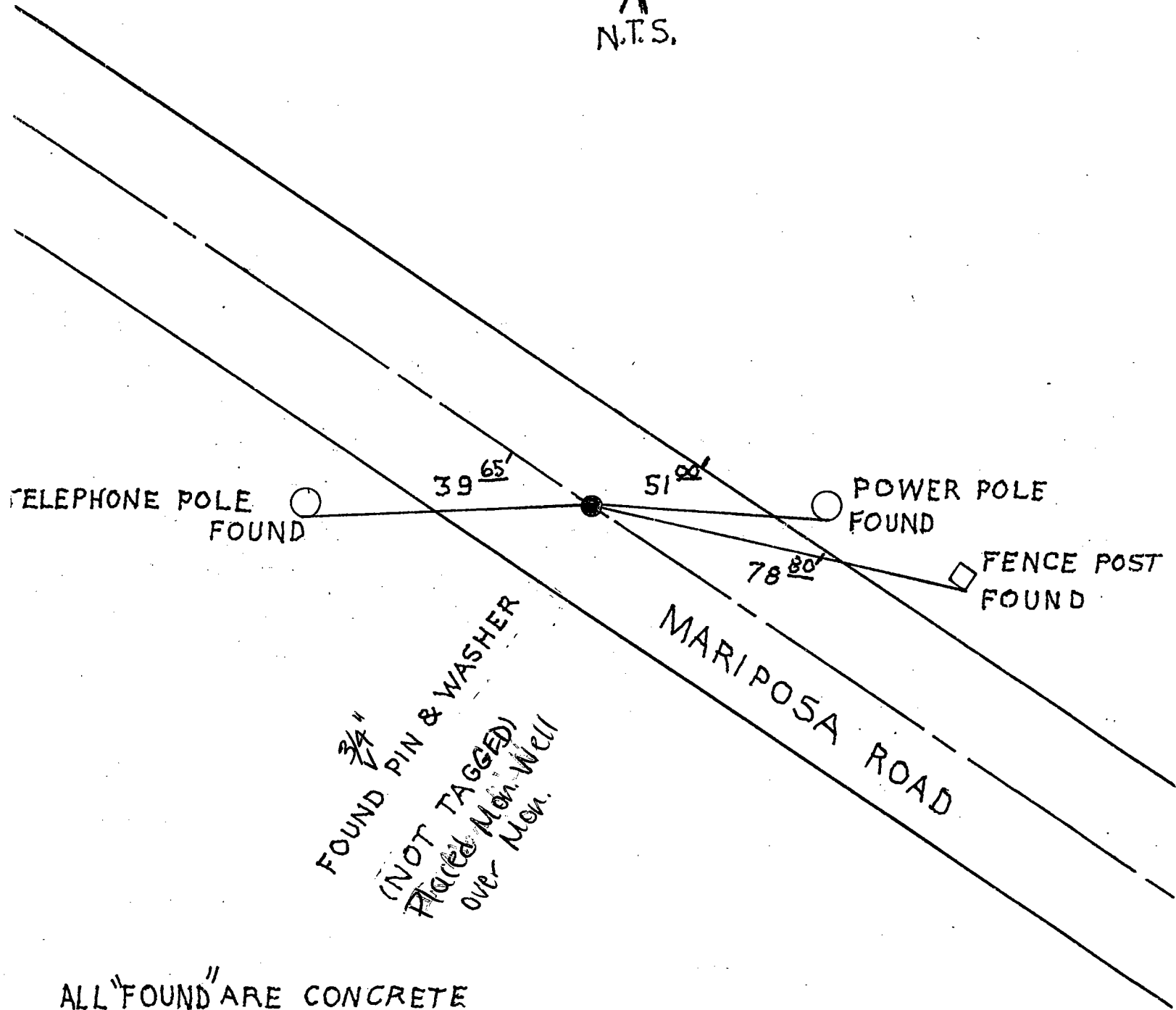
Signed Henry M. Hirata R.C.E. No. 21258

Title _____ County Surveyor



County Surveyors Comment _____

(D.D. Sheet No. 43)



ALL "FOUND" ARE CONCRETE
NAILS & WASHERS,
STAMPED "S. J. CO."

"No attempt was made to verify Monument."