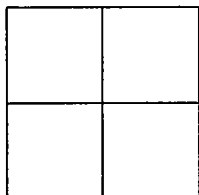


CORNER RECORD

Document Number CR-00-84

City of _____ County of San Joaquin, California
Brief Legal Description: BOOK 17 OF PARCEL MAPS AT PAGE 81, SAN JOAQUIN COUNTY RECORDS



CORNER TYPE

Government Corner Control
Meander Property
Rancho Other

Date of Survey: SEPT. 28 1999

COORDINATES (Optional)

N. _____
E. _____
Zone _____ NAD27 NAD83
NAD83 Epoch _____
Elev. _____
Vert. Datum: NGVD29 NAVD88
Meas. Units: Metric Imperial

Corner— Left as found Found and tagged Established Reestablished Rebuilt

Identification and type of corner found: Evidence used to identify or procedure used to establish or reestablish the corner:

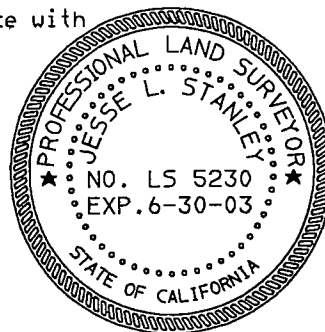
RE-ESTABLISHED THE N.E. CORNER OF PARCEL 2, AND THE TWO ANGLE POINTS IN THE NORTH LINE OF SAID PARCEL 2, AS SHOWN ON PARCEL MAP FILED IN BOOK 17 OF PARCEL MAPS AT PAGE 81, SAN JOAQUIN COUNTY RECORDS

A description of the physical condition of the monument as found and as set or reset: SET 3/4" REBAR 30" LONG WITH CAP STAMPED L.S. 5230.

SURVEYOR'S STATEMENT

This Corner Record was prepared by me or under my direction in conformance with the Land Surveyors' Act on SEPT. 28, 1999

Signed Jesse L. Stanley L.S. or R.C.E. Number L.S. 5230

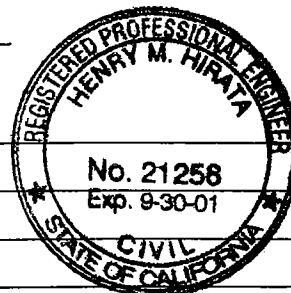


COUNTY SURVEYOR'S STATEMENT

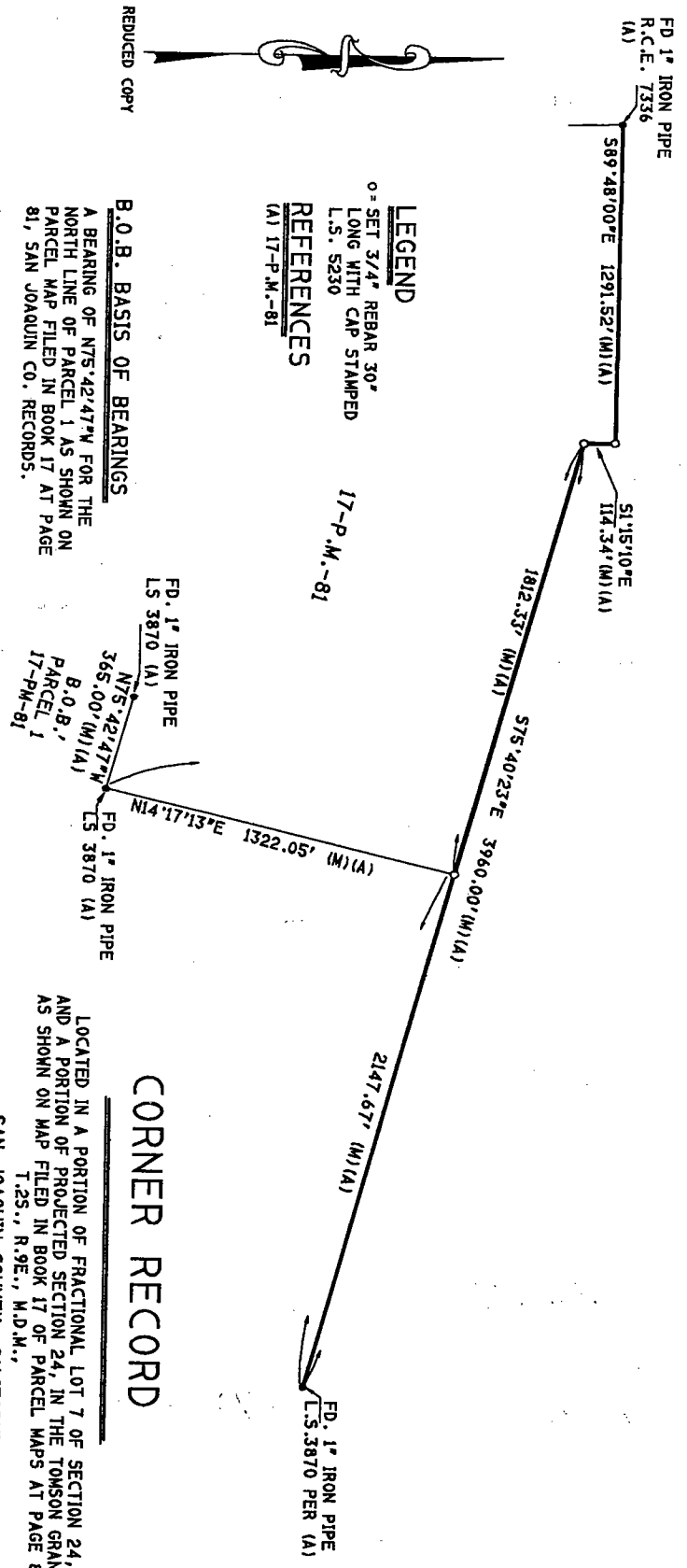
This Corner Record was received FEB. 7, 2000, and examined and filed FEB. 8, 2000.

Signed: Henry M. Hirata Title: COUNTY SURVEYOR

County Surveyors Comment: _____



NOTE
 ALL MISSING MONUMENTS
 WERE DESTROYED BY GRADING
 FOR GRAPE VINYARD AND WERE
 RESET BASED ONLY UPON 17-P.M.-81.



LEGEND
 0" SET 3/4" REBAR 30"
 LONG WITH CAP STAMPED
 L.S. 5230
REFERENCES
 (A) 17-P.M.-81

B.O.B. BASIS OF BEARINGS
 A BEARING OF N75°42'47"W FOR THE
 NORTH LINE OF PARCEL 1 AS SHOWN ON
 PARCEL MAP FILED IN BOOK 17 AT PAGE
 81, SAN JOAQUIN CO. RECORDS.

CORNER RECORD

LOCATED IN A PORTION OF FRACTIONAL LOT 7 OF SECTION 24,
 AND A PORTION OF PROJECTED SECTION 24, IN THE TOMSON GRANT
 AS SHOWN ON MAP FILED IN BOOK 17 OF PARCEL MAPS AT PAGE 81,
 T.25., R.9E., M.D.M.,
 SAN JOAQUIN COUNTY, CALIFORNIA

JESSE STANLEY
 LAND SURVEYING-ENGINEERING
 460 N. YOSEMITE AVE.
 OAKDALE, CALIFORNIA 95361

REDUCED COPY