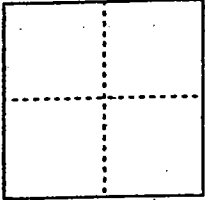


CORNER RECORD

Document Number 00-60  
County of San Joaquin, California

City of \_\_\_\_\_

Brief Legal Description Intersection of Cherokee Road and Lagorio Road per  
F.B. 640, pg. 19.



CORNER TYPE

Government Corner  Control   
Meander  Property   
Rancho  Other   
Date of Survey 10-12-99

COORDINATES (Optional)

N. \_\_\_\_\_  
E. \_\_\_\_\_  
Zone \_\_\_\_\_ NAD27  NAD83   
NAD83 Epoch \_\_\_\_\_  
Elev. \_\_\_\_\_  
Vert. Datum: NGVD29  NAVD88   
Meas. Units: Metric  Imperial

Corner - Left as found  Found and tagged  Established  Reestablished  Rebuilt

Identification and type of corner found: Evidence used to identify or procedure used to establish or reestablish the corner:  
See Sketch on Backside.

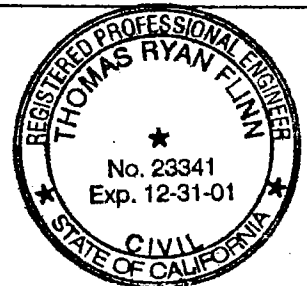
A description of the physical condition of the monument as found and as set or reset:

Found Monument in good condition  
See Sketch on Backside

SURVEYOR'S STATEMENT

This Corner Record was prepared by me or under my direction in conformance with the Land Surveyors' Act on 2 Feb, 2000.

Signed \_\_\_\_\_ L.S. or R.C.E. Number 23341



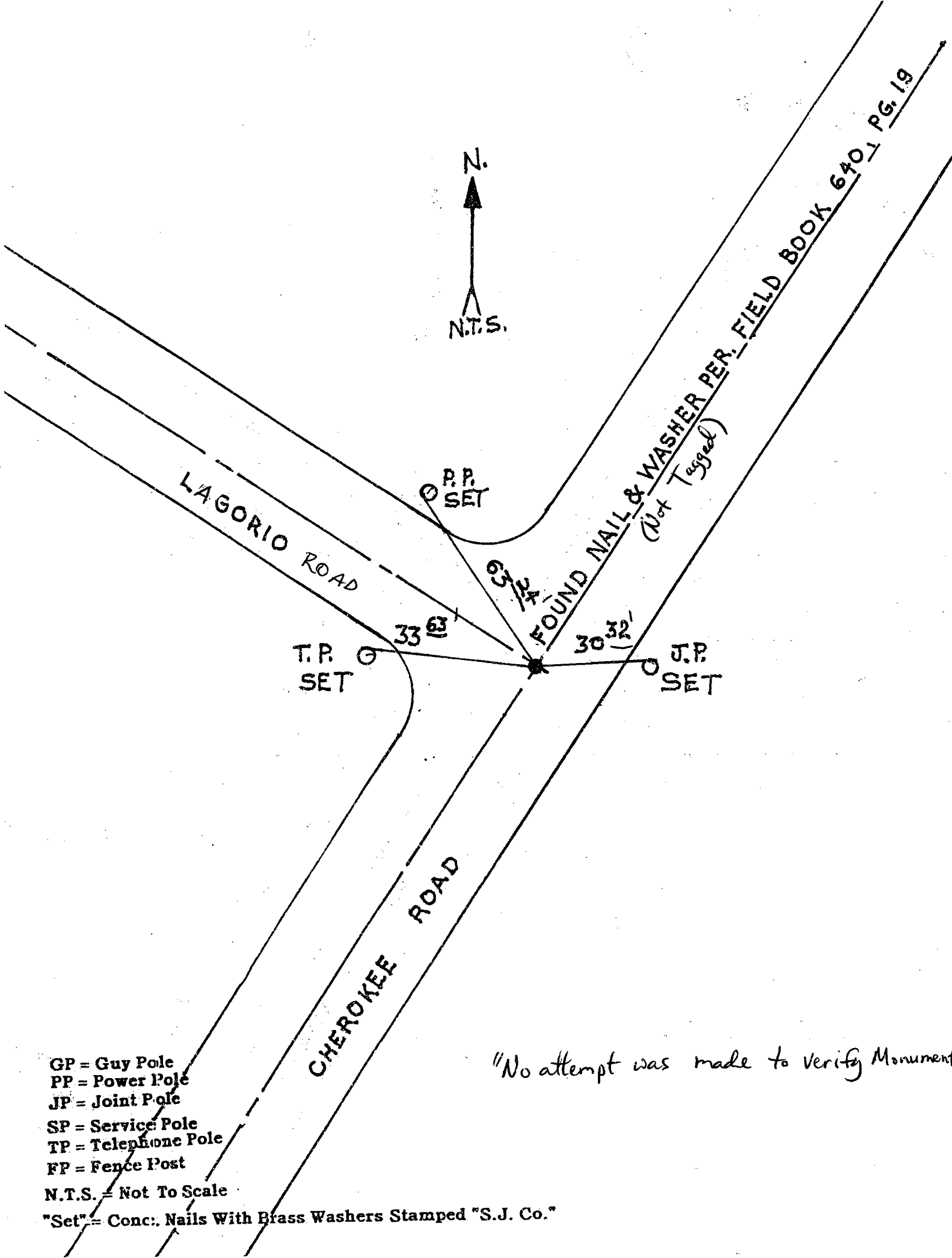
COUNTY SURVEYOR'S STATEMENT

This Corner Record was received 2-4-, 2000 and examined and filed 2-7-, 2000.

Signed Henry M. Hirata R.C.E. No. 21258  
Title County Surveyor



County Surveyors Comment \_\_\_\_\_



N.  
 ↑  
 N.T.S.

LAGORIO ROAD

CHEROKEE ROAD

FOUND NAIL & WASHER PER. FIELD BOOK 640, PG. 19  
 (Not Tagged)

P.P. SET

T.P. SET

J.P. SET

33°

30° 32'

67° 24'

- GP = Guy Pole
- PP = Power Pole
- JP = Joint Pole
- SP = Service Pole
- TP = Telephone Pole
- FP = Fence Post
- N.T.S. = Not To Scale

"Set" = Conc. Nails With Brass Washers Stamped "S.J. Co."

"No attempt was made to verify Monument"