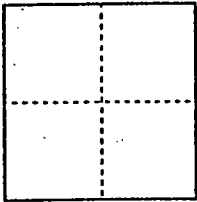


CORNER RECORD

Document Number 00-52
County of San Joaquin, California

City of _____

Brief Legal Description MARIPOSA ROAD 3,050' ± NORTHWESTERLY
OF DROGE ROAD *per FB 2019 10*



CORNER TYPE

- Government Corner Control
- Meander Property
- Rancho Other

Date of Survey 12-7-99

COORDINATES (Optional)

N. _____
 E. _____
 Zone _____ NAD27 NAD83
 NAD83 Epoch _____
 Elev. _____
 Vert. Datum: NGVD29 NAVD88
 Meas. Units: Metric Imperial

Corner - Left as found Found and tagged Established Reestablished Rebuilt

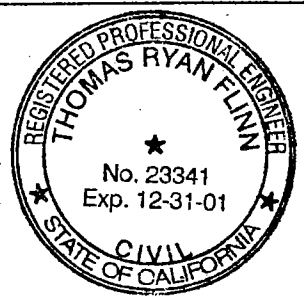
Identification and type of corner found: Evidence used to identify or procedure used to establish or reestablish the corner:
SEE SKETCH ON BACKSIDE

A description of the physical condition of the monument as found and as set or reset:
FOUND MONUMENT IN GOOD CONDITION
SEE SKETCH ON BACKSIDE

SURVEYOR'S STATEMENT

This Corner Record was prepared by me or under my direction in conformance with the Land Surveyors' Act on 2 Feb, 2000

Signed [Signature] L.S. or R.C.E. Number 23341

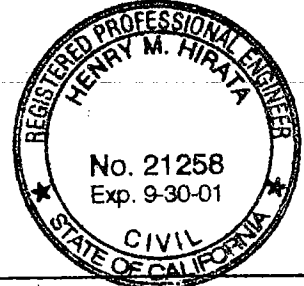


COUNTY SURVEYOR'S STATEMENT

This Corner Record was received 2-4-, 2000, and examined and filed 2-7-, 2000.

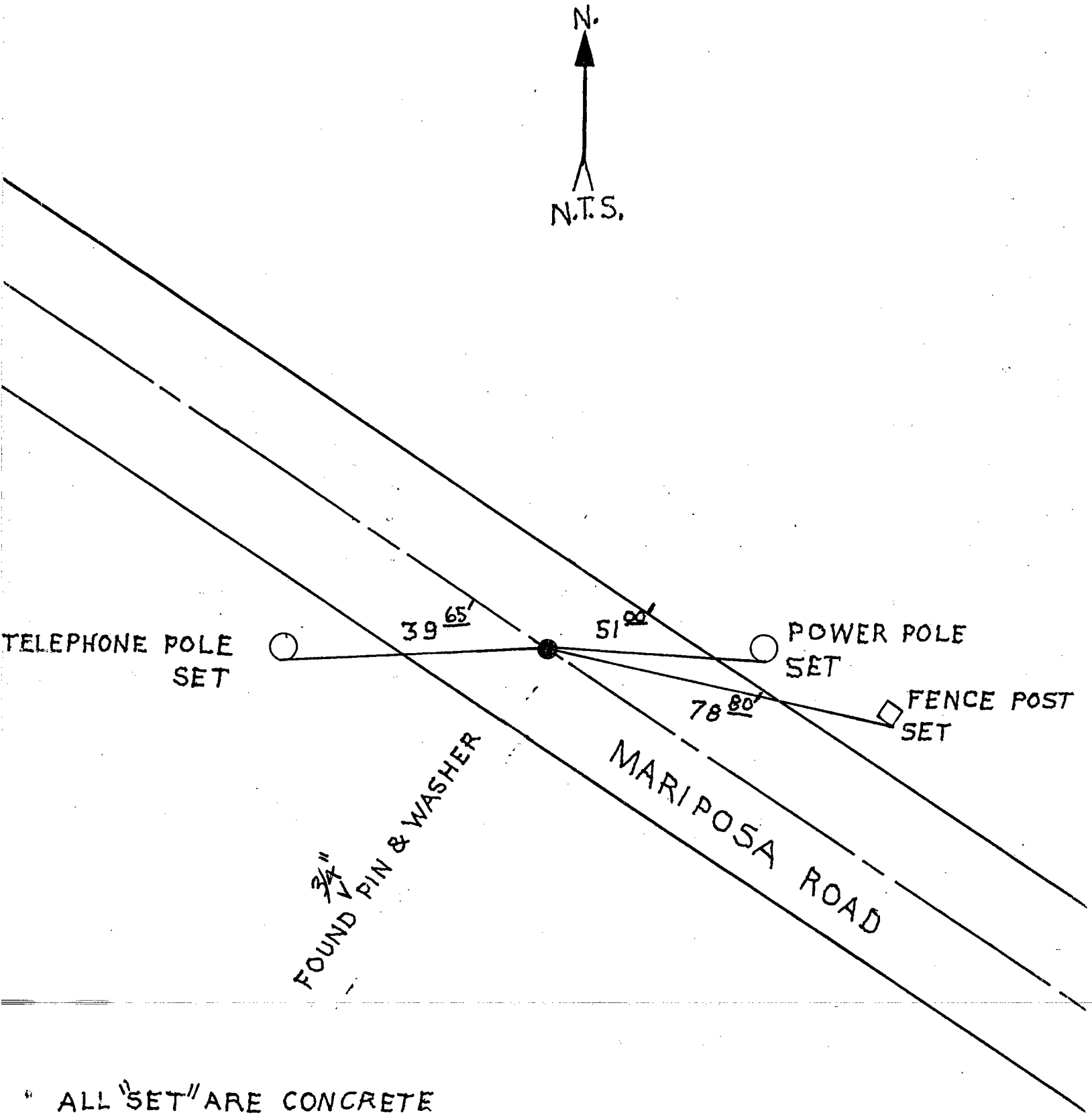
Signed Henry M. Hirata R.C.E. No. 21258

Title County Surveyor



County Surveyors Comment _____

(D.D. Sheet No. 43)



" ALL "SET" ARE CONCRETE
NAILS & WASHERS,
STAMPED "S. J. CO."

"No attempt was made to verify Monument"