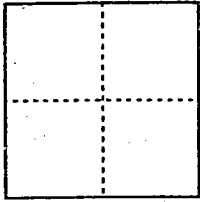


CORNER RECORD

Document Number 00-51
County of San Joaquin, California

City of _____

Brief Legal Description Intersection of Modoc Avenue and Wendell Avenue (No Record)



CORNER TYPE

Government Corner Control
Meander Property
Rancho Other
Date of Survey 9-28-99

COORDINATES (Optional)

N. _____
E. _____
Zone _____ NAD27 NAD83
NAD83 Epoch _____
Elev. _____
Vert. Datum: NGVD29 NAVD88
Meas. Units: Metric Imperial

Corner - Left as found Found and tagged Established Reestablished Rebuilt

Identification and type of corner found: Evidence used to identify or procedure used to establish or reestablish the corner:

See Sketch on Backside

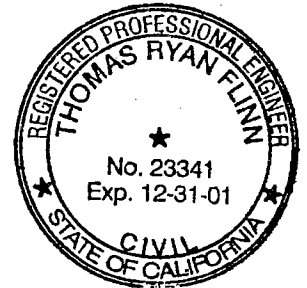
A description of the physical condition of the monument as found and as set or reset:

Found Monument in good Condition. See Sketch on Backside

SURVEYOR'S STATEMENT

This Corner Record was prepared by me or under my direction in conformance with the Land Surveyors' Act on 2 Feb, 2000

Signed [Signature] R.C.E. Number 23341



COUNTY SURVEYOR'S STATEMENT

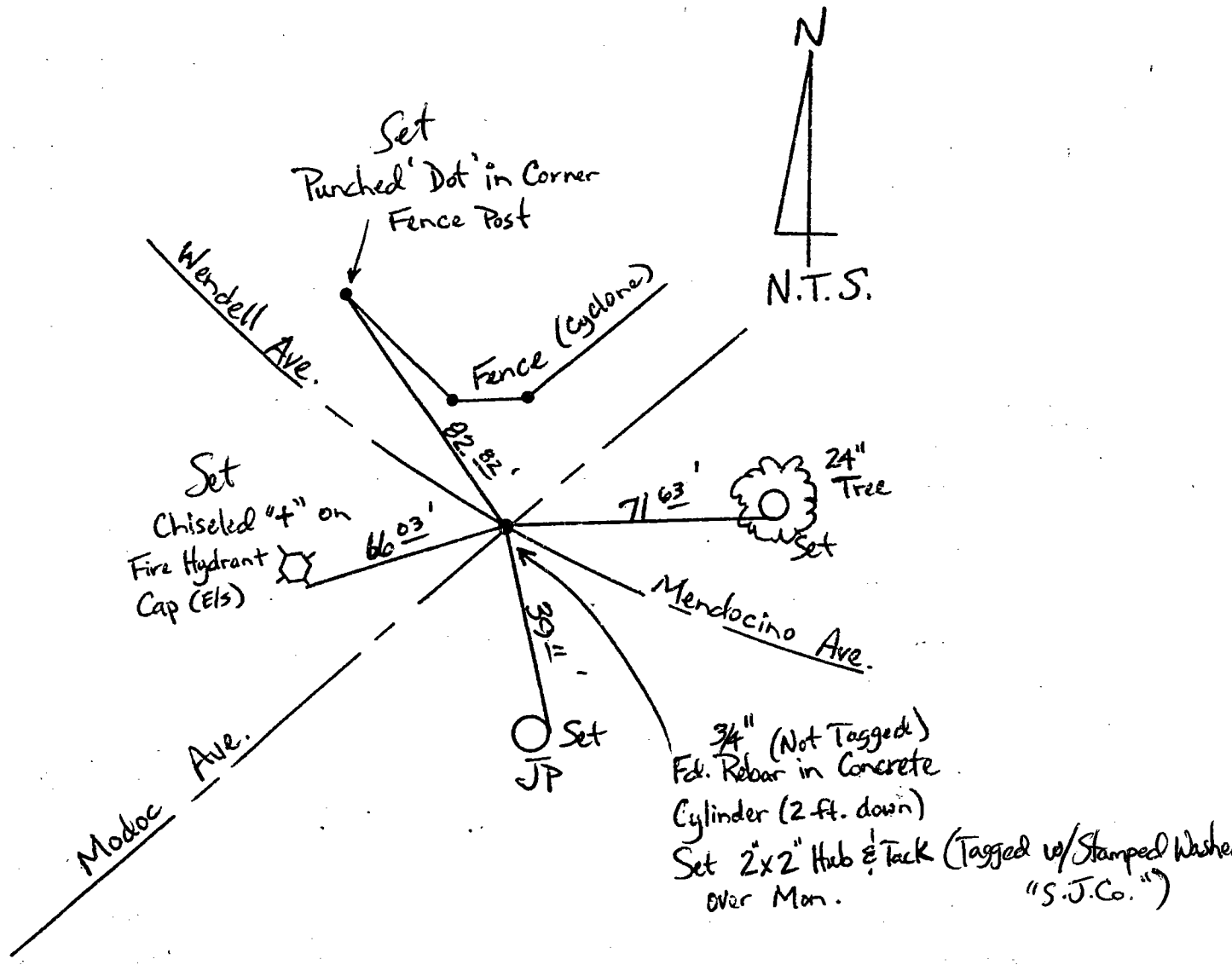
This Corner Record was received 2-4-, 2000 and examined and filed 2-7-, 2000.

Signed Henry M. Hirata R.C.E. No. 21258
Title County Surveyor



County Surveyors Comment _____

(D.D. Sheet No. 30A)



"No attempt was made to verify Monument"

- GP = Guy Pole
- PP = Power Pole
- JP = Joint Pole
- SP = Service Pole
- TP = Telephone Pole
- FP = Fence Post
- N.T.S. = Not To Scale

"Set" = Conc. Nails With Brass Washers Stamped "S.J. Co.", unless otherwise noted