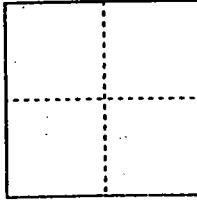


**CORNER RECORD**

Document Number 00-49  
County of San Joaquin, California

City of \_\_\_\_\_

Brief Legal Description Intersection of Mendocino Avenue and Lassen Avenue  
(No Record)



**CORNER TYPE**

Government Corner  Control   
Meander  Property   
Rancho  Other   
Date of Survey 11-30-99

**COORDINATES (Optional)**

N. \_\_\_\_\_  
E. \_\_\_\_\_  
Zone \_\_\_\_\_ NAD27  NAD83   
NAD83 Epoch \_\_\_\_\_  
Elev. \_\_\_\_\_  
Vert. Datum: NGVD29  NAVD88   
Meas. Units: Metric  Imperial

Corner - Left as found  Found and tagged  Established  Reestablished  Rebuilt

Identification and type of corner found: Evidence used to identify or procedure used to establish or reestablish the corner:  
See Sketch on Backside

A description of the physical condition of the monument as found and as set or reset:  
Found Monument in good condition. See Sketch on Backside

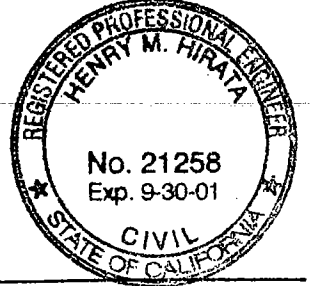
**SURVEYOR'S STATEMENT**

This Corner Record was prepared by me or under my direction in conformance with the Land Surveyors' Act on 2 Feb, 2000  
Signed [Signature] L.S. or R.C.E. Number 23341



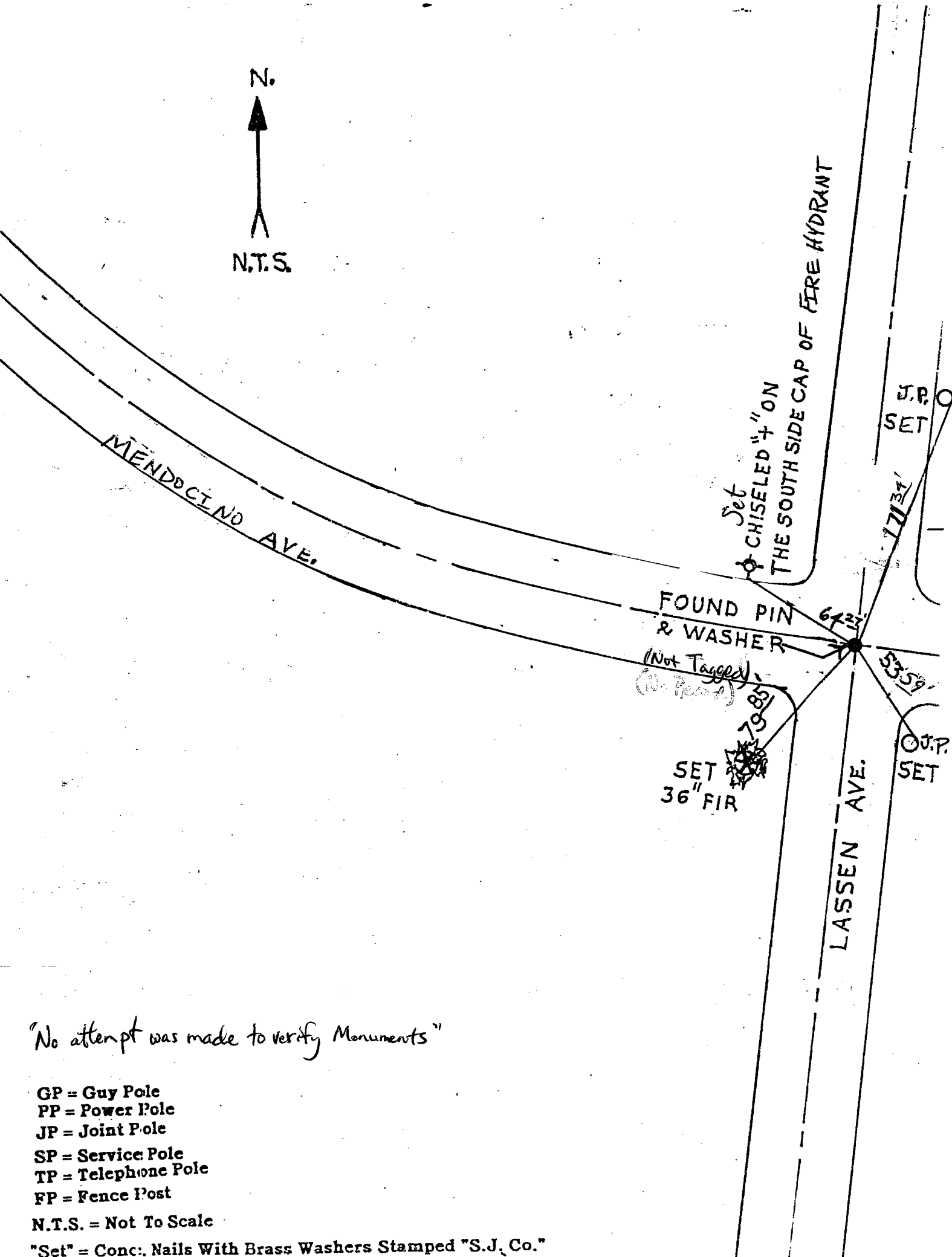
**COUNTY SURVEYOR'S STATEMENT**

This Corner Record was received 2-4-2000, and examined and filed 2-7-2000.  
Signed Henry M. Hirata R.C.E. No. 21258  
Title County Surveyor



County Surveyors Comment \_\_\_\_\_

(D.D. Sheet No. 30A)



N.  
 ↑  
 N.T.S.

MENDOCINO AVE.

Set  
 CHISELED "4" ON  
 THE SOUTH SIDE CAP OF FIRE HYDRANT

FOUND PIN  
 & WASHER  
 (Not Tagged)  
 (No Record)

SET  
 36" FIR

LASSEN AVE.

J.P.  
 SET

J.P.  
 SET

"No attempt was made to verify Monuments"

- GP = Guy Pole
- PP = Power Pole
- JP = Joint Pole
- SP = Service Pole
- TP = Telephone Pole
- FP = Fence Post

N.T.S. = Not To Scale

"Set" = Conc. Nails With Brass Washers Stamped "S.J. Co."