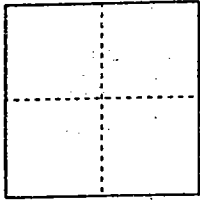


CORNER RECORD

Document Number 00-42
County of San Joaquin, California

City of _____

Brief Legal Description THE INTERSECTION OF HILDRETH LANE AND ALHAMBRA AVE. per RS-31-46



CORNER TYPE

Government Corner Control
Meander Property
Rancho Other
Date of Survey 12-05-99

COORDINATES (Optional)

N. _____
E. _____
Zone _____ NAD27 NAD83
NAD83 Epoch _____
Elev. _____
Vert. Datum: NGVD29 NAVD88
Meas. Units: Metric Imperial

Corner - Left as found Found and tagged Established Reestablished _____ Rebuilt

Identification and type of corner found: Evidence used to identify or procedure used to establish or reestablish the corner:
PER SWING TIES ON C.R. 00-41. PIN & WASHER PER. R.S-31-46
SEE SKETCH ON BACKSIDE
(Stamped RE 9338)

A description of the physical condition of the monument as found and as set or reset: FOUND PIN & WASHER PER RS-31-46 IN GOOD CONDITION AND PLACED MONUMENT WELL OVER MONUMENT. SEE SKETCH ON BACKSIDE

SURVEYOR'S STATEMENT

This Corner Record was prepared by me or under my direction in conformance with the Land Surveyors' Act on 12/31/1999, 2000.

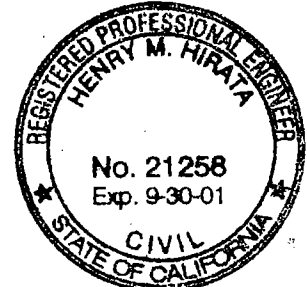
Signed [Signature] L.S. or R.C.E. Number 23341



COUNTY SURVEYOR'S STATEMENT

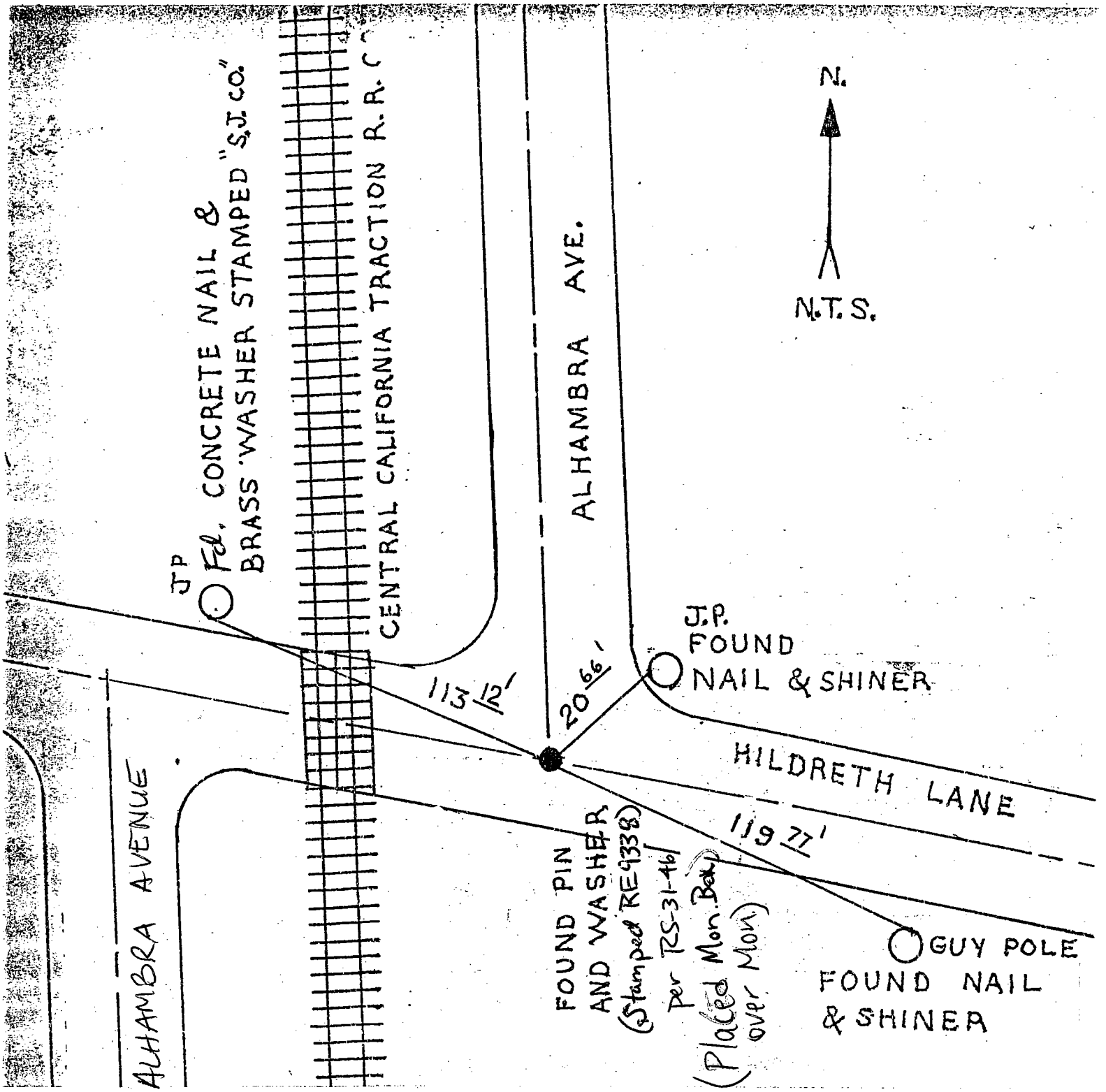
This Corner Record was received 2-1-, 2000 and examined and filed 2-2-, 2000.

Signed Henry M. Hirata R.C.E. No. 21258
Title County Surveyor



County Surveyors Comment _____

(D.D. Sheet No. 27)



"No Attempt Was Made To Verify Monument(s)"

FP = Fence Post

GP = Guy Post

JP = Joint Pole

PP = Power Pole

SP = Service Pole

TP = Telephone Pole

N.T.S. = Not To Scale

Fd = Conc. Nails with Brass Washers Stamped "S.J. Co.", unless otherwise noted