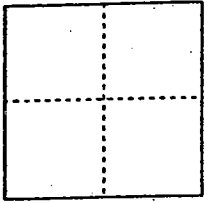


CORNER RECORD

Document Number 00-35
County of San Joaquin, California

City of _____

Brief Legal Description Intersection of Lower Sacramento Road and Peltier Road



CORNER TYPE

- Government Corner Control
- Meander Property
- Rancho Other

Date of Survey 10-09-99

COORDINATES (Optional)

N. _____
 E. _____
 Zone _____ NAD27 NAD83
 NAD83 Epoch _____
 Elev. _____
 Vert. Datum: NGVD29 NAVD88
 Meas. Units: Metric Imperial

Corner - Left as found Found and tagged Established Reestablished Rebuilt

Identification and type of corner found: Evidence used to identify or procedure used to establish or reestablish the corner:

See Sketch on Backside

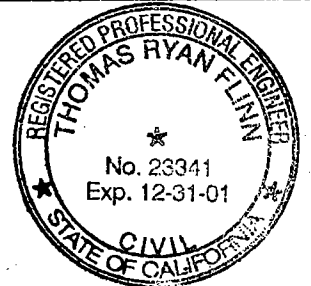
A description of the physical condition of the monument as found and as set or reset:

Found Monument in good condition.
See Sketch on Backside

SURVEYOR'S STATEMENT

This Corner Record was prepared by me or under my direction in conformance with the Land Surveyors' Act on 12/31/1999, 2000.

Signed [Signature] L.S. or R.C.E. Number 23341



COUNTY SURVEYOR'S STATEMENT

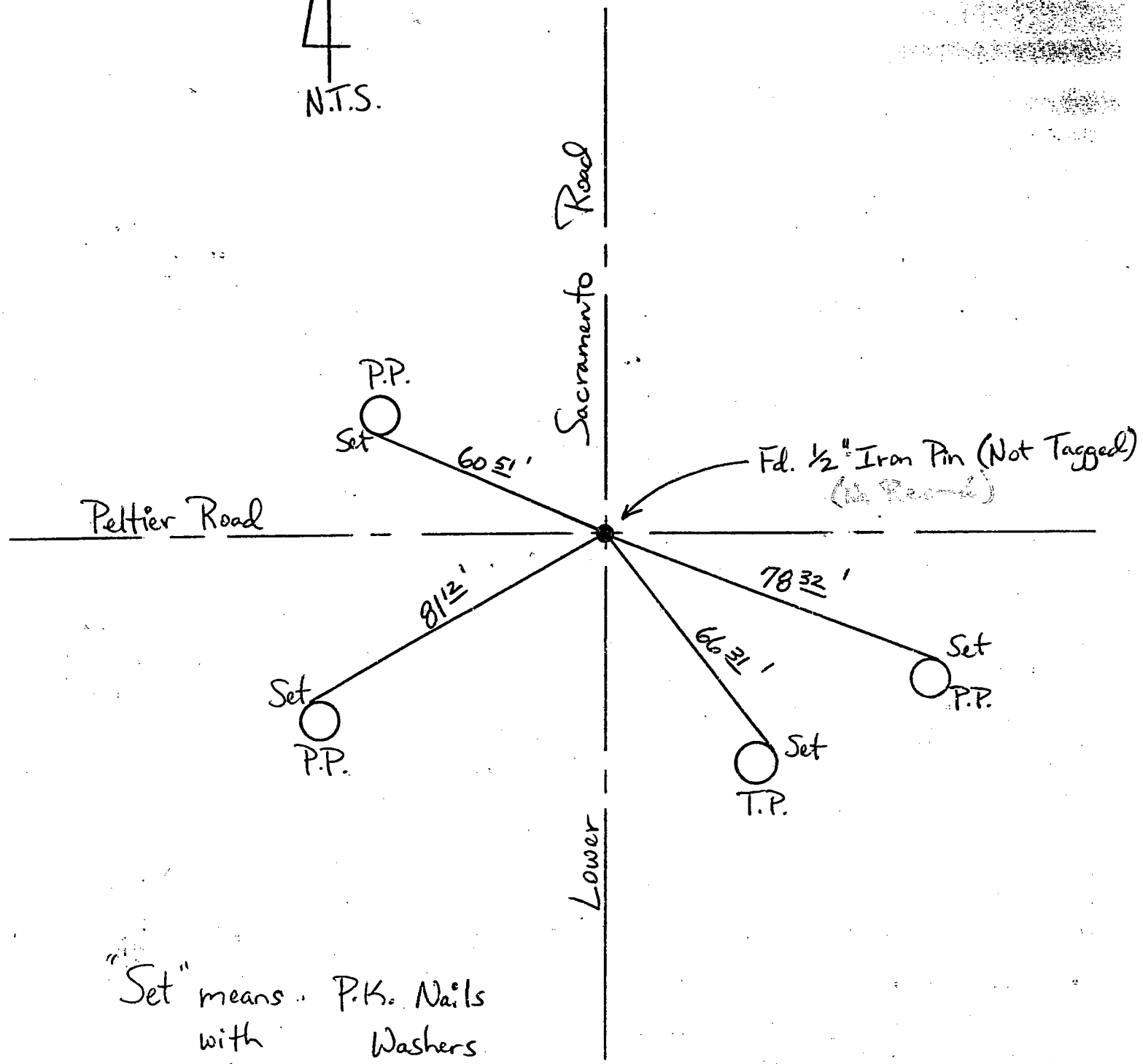
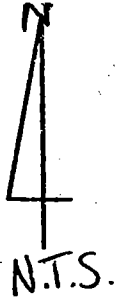
This Corner Record was received 2-1-, 2000 and examined and filed 2-2-, 2000.

Signed Henry M. Hirata R.C.E. No. 21258

Title County Surveyor



County Surveyors Comment _____



"Set" means P.K. Nails
with Washers
Stamped "S.J. Co."

"No Attempt Was Made To Verify Monument(s)"

- FP = Fence Post
- GP = Guy Post
- JP = Joint Pole
- PP = Power Pole
- SP = Service Pole
- TP = Telephone Pole
- N.T.S. = Not To Scale
- Set = Conc. Nails with Brass Washers Stamped "S.J. Co.", unless otherwise noted