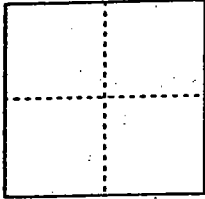


CORNER RECORD

Document Number 00-34  
County of San Joaquin, California

City of \_\_\_\_\_

Brief Legal Description Intersection of Lower Sacramento Road and Jahant Road (East)



CORNER TYPE

- Government Corner  Control
- Meander  Property
- Rancho  Other

Date of Survey 12-23-99

COORDINATES (Optional)

N. \_\_\_\_\_  
 E. \_\_\_\_\_  
 Zone \_\_\_\_\_ NAD27  NAD83   
 NAD83 Epoch \_\_\_\_\_  
 Elev. \_\_\_\_\_  
 Vert. Datum: NGVD29  NAVD88   
 Meas. Units: Metric  Imperial

Corner - Left as found  Found and tagged  Established  Reestablished  Rebuilt

Identification and type of corner found: Evidence used to identify or procedure used to establish or reestablish the corner:  
Reestablished location of Fd. 1/2" Iron Pin (Not Tagged) (No Record) per Swings ties on C.R.-00-33.

See Sketch on Backside

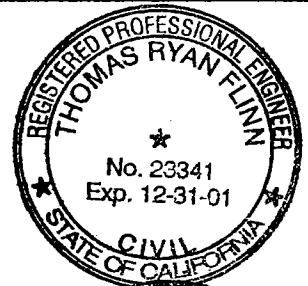
A description of the physical condition of the monument as found and as set or reset: Fd. 1/2" Iron Pin (Not Tagged) (No Record) in good condition and placed Mon. Box over Monument.

See Sketch on Backside

SURVEYOR'S STATEMENT

This Corner Record was prepared by me or under my direction in conformance with the Land Surveyors' Act on 12/31/1997, 2000.

Signed [Signature] L.S. or R.C.E. Number 23341



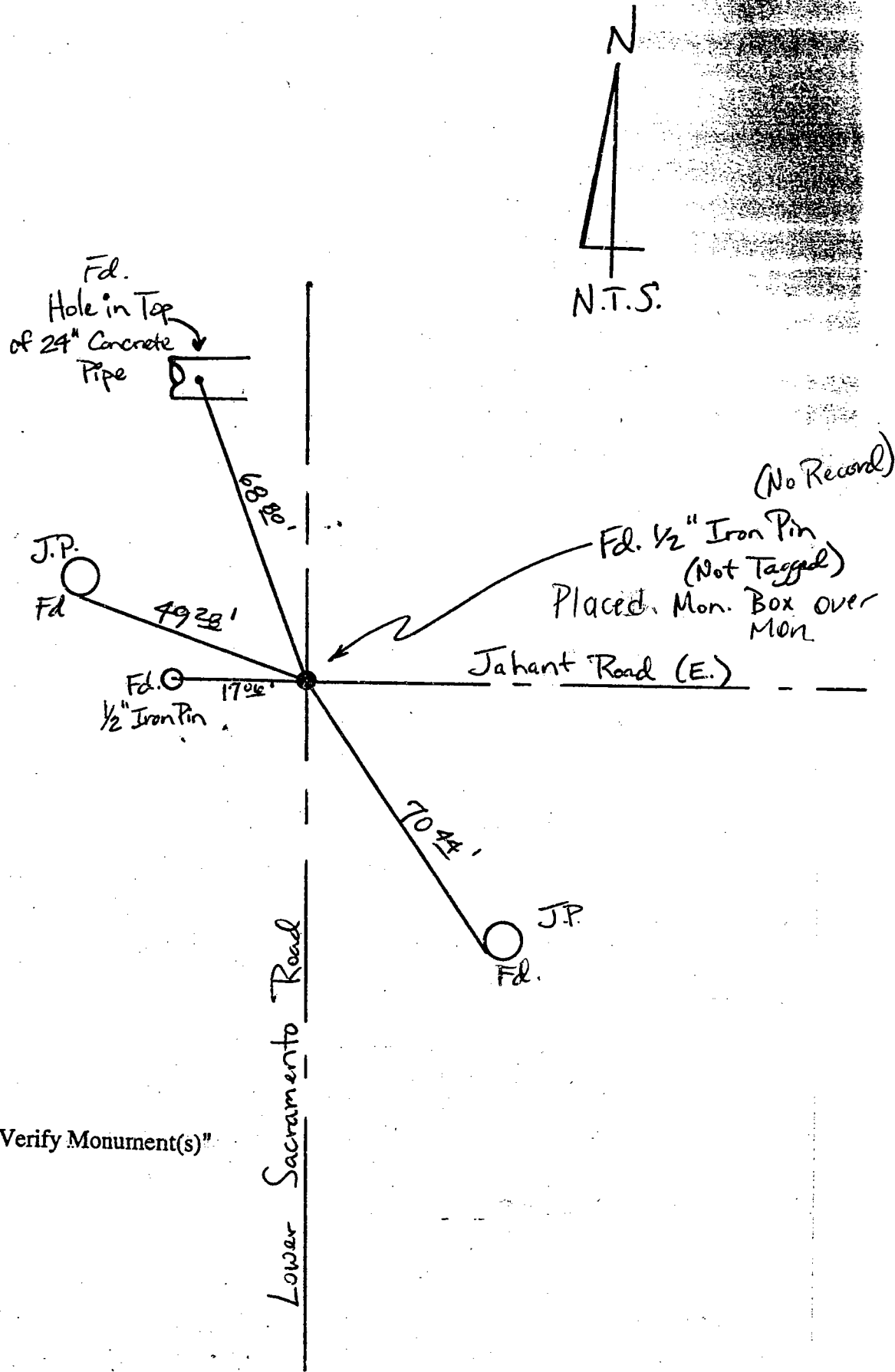
COUNTY SURVEYOR'S STATEMENT

This Corner Record was received 2-1-, 2000 and examined and filed 2-2-, 2000.

Signed Henry M. Hirata R.C.E. No. 21258  
Title County Surveyor



County Surveyors Comment \_\_\_\_\_



"No Attempt Was Made To Verify Monument(s)"

FP = Fence Post

GP = Guy Post

JP = Joint Pole

PP = Power Pole

SP = Service Pole

TP = Telephone Pole

N.T.S. = Not To Scale

Fd. = Conc. Nails with Brass Washers Stamped "S.J. Co.", unless otherwise noted