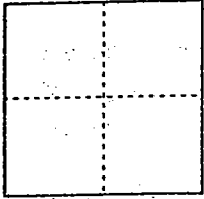


CORNER RECORD

Document Number 00-32
City of _____ County of San Joaquin, California

Brief Legal Description Lower Sacramento Road 3814' ± North of Peltier Road



CORNER TYPE

Government Corner Control
Meander Property
Rancho Other
Date of Survey 12-23-99

COORDINATES (Optional)

N. _____
E. _____
Zone _____ NAD27 NAD83
NAD83 Epoch _____
Elev. _____
Vert. Datum: NGVD29 NAVD88
Meas. Units: Metric Imperial

Corner - Left as found Found and tagged Established Reestablished Rebuilt

Identification and type of corner found: Evidence used to identify or procedure used to establish or reestablish the corner:

Reestablished location of Fd. Square Nail (Not Tagged)
per Swing ties on C.R-00-31.
See Sketch on Backside

A description of the physical condition of the monument as found and as set or reset:

See Sketch on Backside

SURVEYOR'S STATEMENT

This Corner Record was prepared by me or under my direction in conformance with the Land Surveyors' Act on 12/31/1999, 2000.

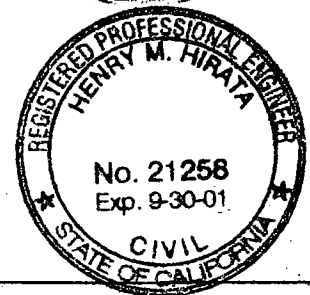
Signed [Signature] L.S. or R.C.E. Number 23341



COUNTY SURVEYOR'S STATEMENT

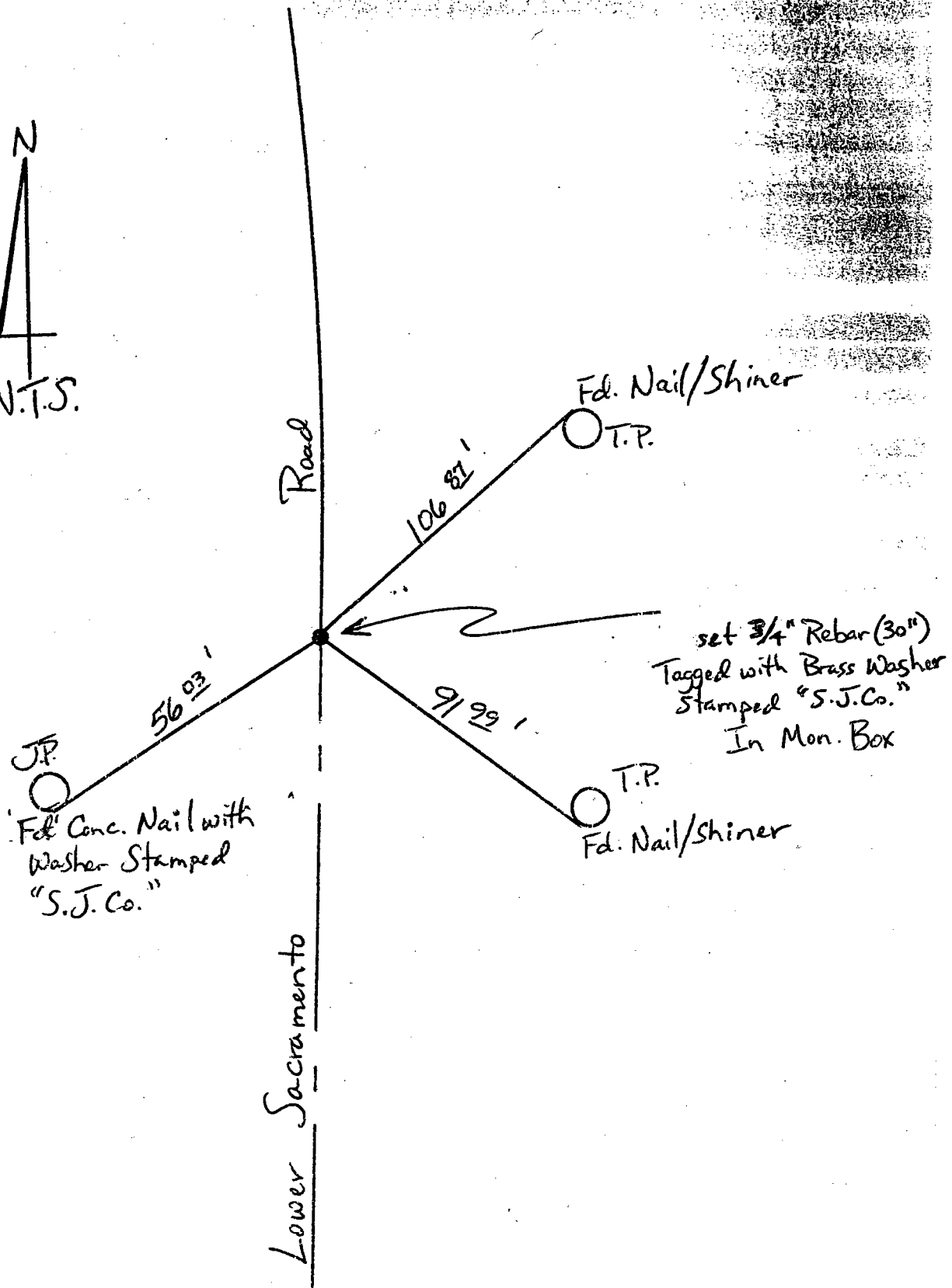
This Corner Record was received 2-1-, 2000 and examined and filed 2-2-, 2000.

Signed Henry M. Hirata R.C.E. No. 21258
Title County Surveyor



County Surveyors Comment _____

(D.D. Sheet No. 12)



"No Attempt Was Made To Verify Monument(s)"

FP = Fence Post

GP = Guy Post

JP = Joint Pole

PP = Power Pole

SP = Service Pole

TP = Telephone Pole

N.T.S. = Not To Scale

Fd = Conc. Nails with Brass Washers Stamped "S.I. Co.", unless otherwise noted