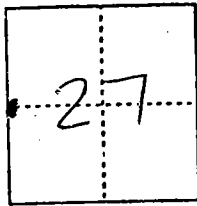


CORNER RECORD

Document Number 00-30
County of San Joaquin, California

City of _____

Brief Legal Description S.W. CORNER OF THE N.W. 1/4 OF SECTION 27,
T. 1 S., R. 8 E. PER. RS. 34-3



CORNER TYPE

Government Corner Control
Meander Property
Rancho Other
Date of Survey 12-14-99

COORDINATES (Optional)

N. _____
E. _____
Zone _____ NAD27 NAD33
NAD83 Epoch _____
Elev. _____
Vert. Datum: NGVD29 NAVD88
Meas. Units: Metric Imperial

Corner - Left as found Found and tagged Established Reestablished _____ Rebuilt

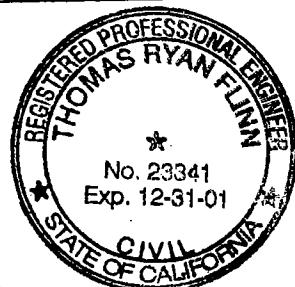
Identification and type of corner found: Evidence used to identify or procedure used to establish or reestablish the corner:
FOUND 3/4" PIN AND WASHR
(NOT TAGGED) PER. R.S. 34-3 PER SWING TIES ON C.R.-00-29.
SEE SKETCH ON BACK SIDE

A description of the physical condition of the monument as found and as set or reset: FOUND 3/4" PIN
AND WASHER (NOT TAGGED) IN GOOD CONDITION
AND PLACED MONUMENT WELL OVER MONUMENT. SEE SKETCH
ON BACKSIDE.

SURVEYOR'S STATEMENT

This Corner Record was prepared by me or under my direction in conformance with the Land Surveyors' Act on 12/31/1999

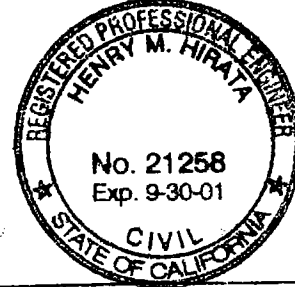
Signed [Signature] L.S. or R.C.E. Number 23341



COUNTY SURVEYOR'S STATEMENT

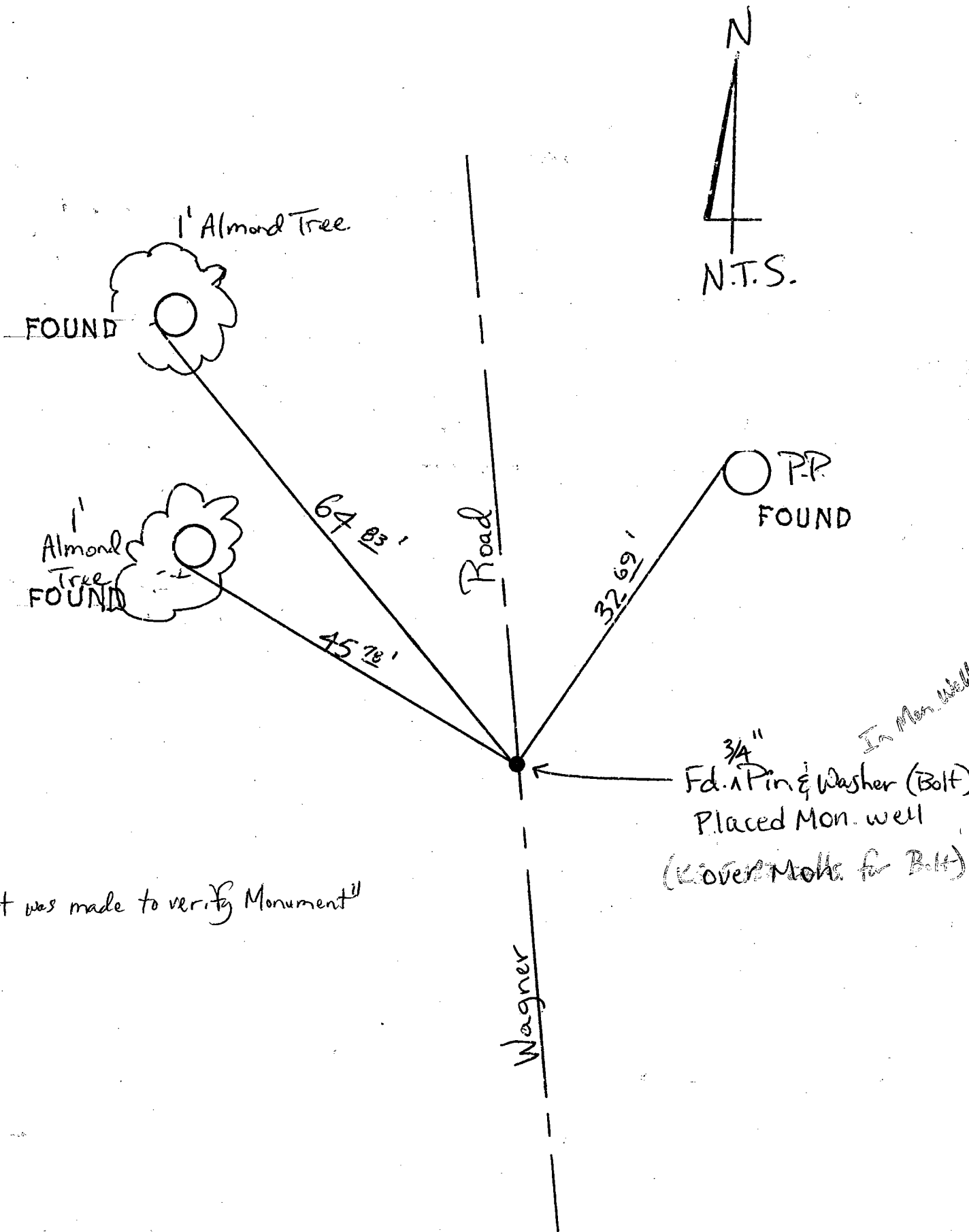
This Corner Record was received 2-1-2000 and examined and filed 2-2-2000

Signed Henry M. Hirata R.C.E. No. 21258
Title County Surveyor



County Surveyors Comment _____

(D.D. Sheet No. 44445)



"No attempt was made to verify Monument"

FOUND → Means Conc. Nails With Brass Washers Stamped "S.J. Co."