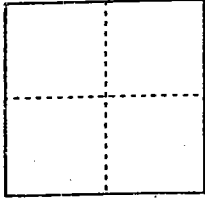


CORNER RECORD

Document Number 00-26  
County of San Joaquin, California

City of \_\_\_\_\_

Brief Legal Description Intersection of Lower Sacramento Road and Armstrong Road per RS-12-70



CORNER TYPE

- Government Corner  Control
- Meander  Property
- Rancho  Other

Date of Survey 12/27/99

COORDINATES (Optional)

N. \_\_\_\_\_  
 E. \_\_\_\_\_  
 Zone \_\_\_\_\_ NAD27  NAD83   
 NAD83 Epoch \_\_\_\_\_  
 Elev. \_\_\_\_\_  
 Vert. Datum: NGVD29  NAVD88   
 Meas. Units: Metric  Imperial

Corner - Left as found  Found and tagged  Established  Reestablished  Rebuilt

Identification and type of corner found: Evidence used to identify or procedure used to establish or reestablish the corner:  
Reestablished location of Fd. Pin & Washer (Not Tagged) per RS-12-70 per Swingties on C.R. 2000  
Reestablished location of Fd PK Nail & Shiver (Not Tagged) per F.B. 689, Pg. 31 per Swingties on C.R. - 00-25

See Sketch on Backside

A description of the physical condition of the monument as found and as set or reset:

See Sketch on Backside

SURVEYOR'S STATEMENT

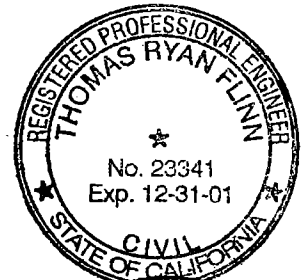
This Corner Record was prepared by me or under my direction in conformance with the Land Surveyors' Act on 12/31/1999, 2000.

Signed [Signature] L.S. or R.C.E. Number 23341

COUNTY SURVEYOR'S STATEMENT

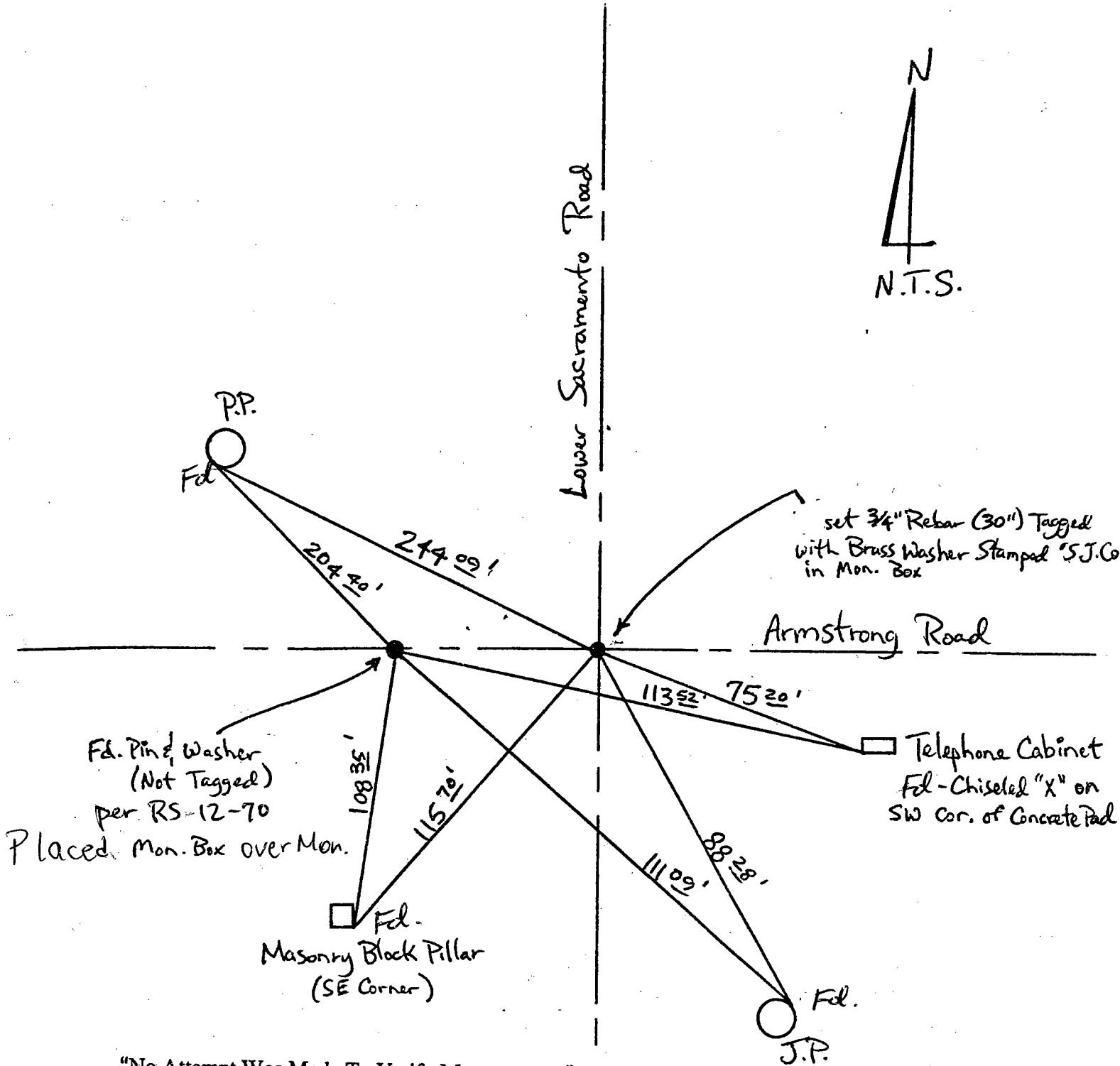
This Corner Record was received 2-1-, 2000 and examined and filed 2-2-, 2000.

Signed Henry M. Hirata R.C.E. No. 21258  
Title County Surveyor



County Surveyors Comment \_\_\_\_\_

(D.D. Sheet No. 14 & 15)



"No Attempt Was Made To Verify Monument(s)"

FP = Fence Post

GP = Guy Post

JP = Joint Pole

PP = Power Pole

SP = Service Pole

TP = Telephone Pole

N.T.S. = Not To Scale

Fd = Conc. Nails with Brass Washers Stamped "S.J. Co.", unless otherwise noted