

CORNER RECORD

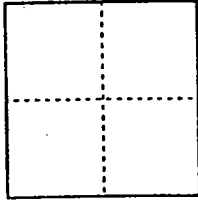
Document Number 00-24
County of San Joaquin, California

City of _____

Brief Legal Description Manthey Road 1360'± North westerly of Hospital Road
per RS-30-165; Manthey Road 1480'± Northwesterly of Hospital Road (No Record)

CORNER TYPE

COORDINATES (Optional)



Government Corner Control
Meander Property
Rancho Other
Date of Survey 12-3-99

N. _____
E. _____
Zone _____ NAD27 NAD83
NAD83 Epoch _____
Elev. _____
Vert. Datum: NGVD29 NAVD88
Meas. Units: Metric Imperial

Corner - Left as found Found and tagged Established Reestablished Rebuilt

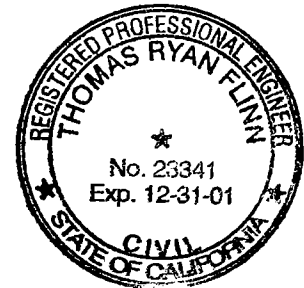
Identification and type of corner found: Evidence used to identify or procedure used to establish or reestablish the corner:
Reestablished location of Found Pin and Washer (Not Tagged) per RS-30-165 per
Swings on C.R. 09-23. Reestablished location of Found Pin and Washer (Not
Tagged) (No Record) per swings on C.R. 09-23. 3/4"
(RS-30-165 calls for Iron Pin) See Sketch on Backside

A description of the physical condition of the monument as found and as set or reset: Fd. Pin and Washer (Not Tagged)
per RS-30-165 in good condition and placed Mon. well over Mon. Fd. 3/4" Pin and
Washer (Not Tagged) (No Record) Pin in good condition and placed Mon. well
over Mon. See Sketch on Backside

SURVEYOR'S STATEMENT

This Corner Record was prepared by me or under my direction in conformance with
the Land Surveyors' Act on 12/31/1999

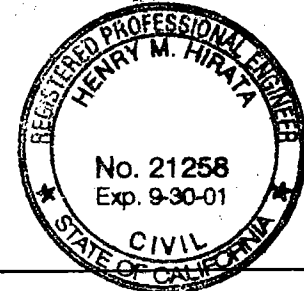
Signed _____ L.S. or R.C.E. Number 23341



COUNTY SURVEYOR'S STATEMENT

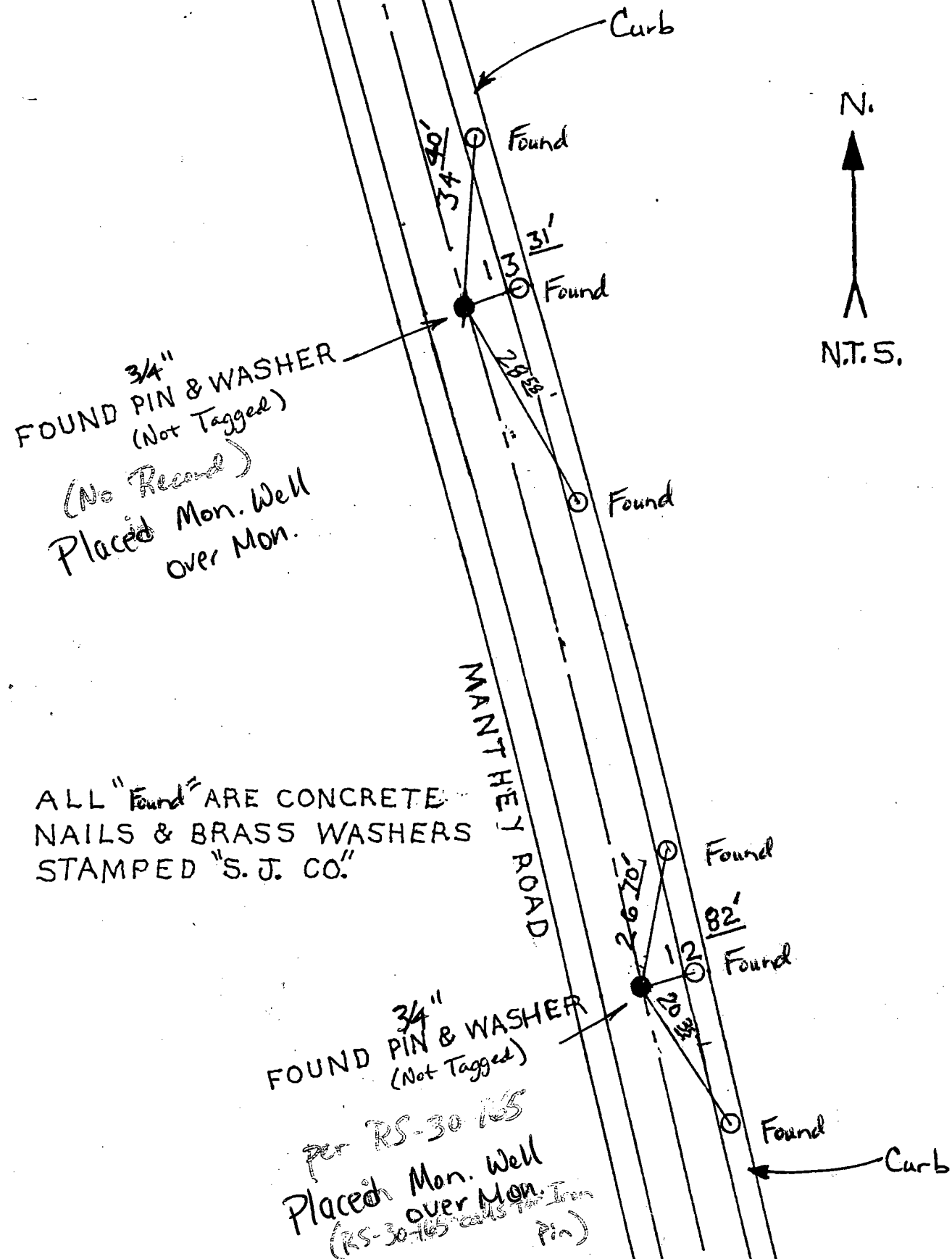
This Corner Record was received 2-1-2000 and examined
and filed 2-2-2000

Signed Henry M. Hirata R.C.E. No. 21258
Title _____ County Surveyor



County Surveyors Comment _____

(D.D. Sheet No. 34)



3/4"
FOUND PIN & WASHER
(Not Tagged)
(No Record)
Placed Mon. Well
over Mon.

ALL "Found" ARE CONCRETE
NAILS & BRASS WASHERS
STAMPED "S. J. CO."

3/4"
FOUND PIN & WASHER
(Not Tagged)
per RS-30 RS
Placed Mon. Well
over Mon.
(RS-30-165 calls for Iron
Pin)



"No attempt was made to verify Monuments"