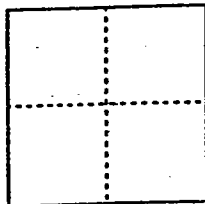


CORNER RECORD

Document Number 00-22
County of San Joaquin, California

City of _____

Brief Legal Description Manthey Road 563'± Sutherly of Hospital Road



CORNER TYPE

- Government Corner Control
- Meander Property
- Rancho Other

Date of Survey 12-3-99

COORDINATES (Optional)

N. _____
 E. _____
 Zone _____ NAD27 NAD83
 NAD83 Epoch _____
 Elev. _____
 Vert. Datum: NGVD29 NAVD88
 Meas. Units: Metric Imperial

Corner - Left as found Found and tagged Established Reestablished Rebuilt

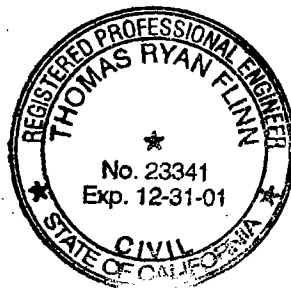
Identification and type of corner found: Evidence used to identify or procedure used to establish or reestablish the corner:
Found 3/4" pin and washer (Not tagged) per swings on C.R. -00-21.
See sketch on backside

A description of the physical condition of the monument as found and as set or reset: Found 3/4" pin and washer (Not tagged) in good condition and placed Mon. well over Mon.
See sketch on Backside

SURVEYOR'S STATEMENT

This Corner Record was prepared by me or under my direction in conformance with the Land Surveyors' Act on 12/31/1999, 2000.

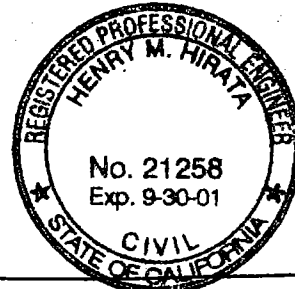
Signed [Signature] L.S. or R.C.E. Number 23341



COUNTY SURVEYOR'S STATEMENT

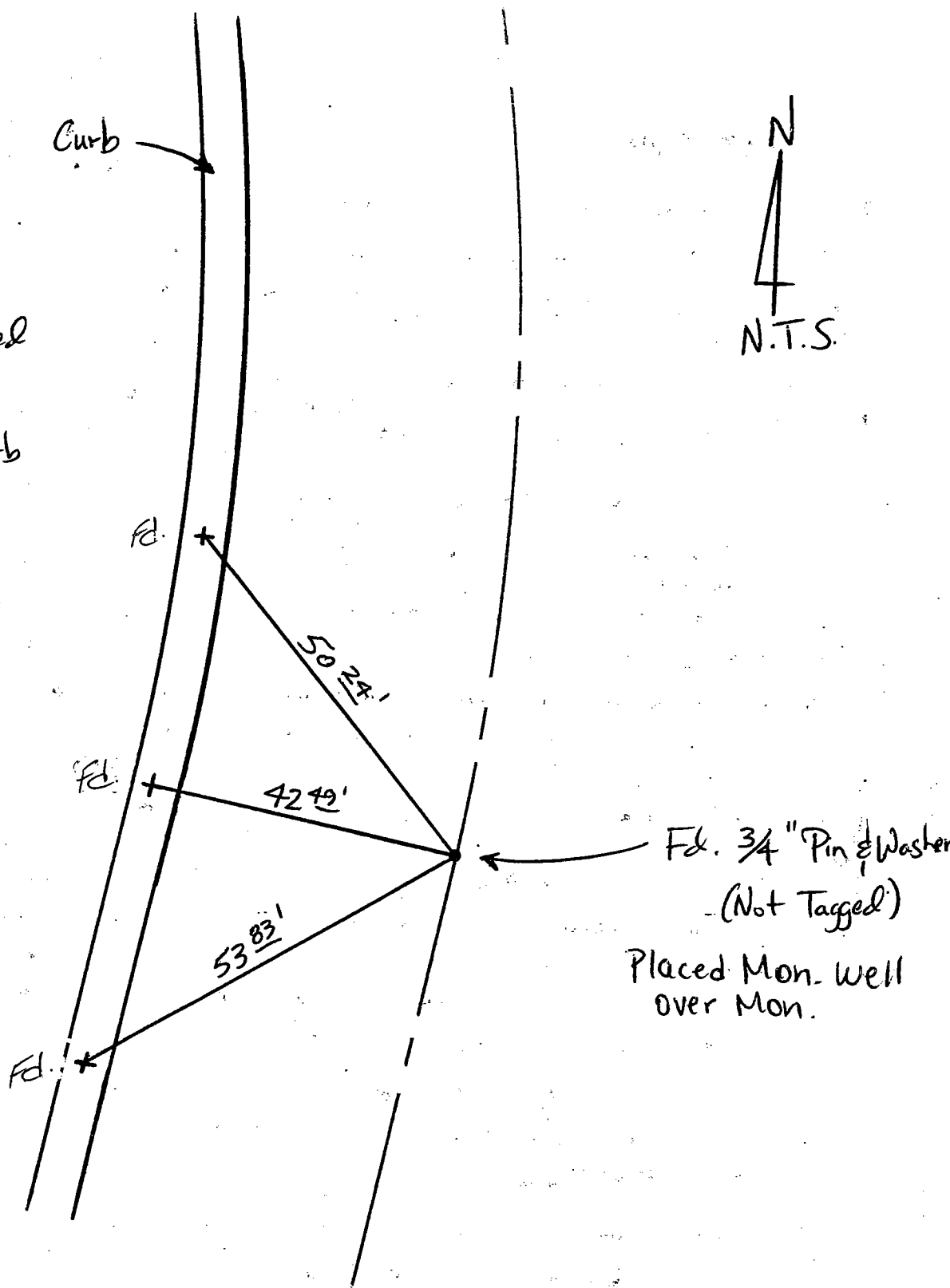
This Corner Record was received 2-1-, 2000 and examined and filed 2-2-, 2000.

Signed Henry M. Hirata R.C.E. No. 21258
Title County Surveyor



County Surveyors Comment _____

All "Fd." are Chiseled
Crosses "+" on the
top of Concrete Curb



Fd. 3/4" Pin & Washer
(Not Tagged)
Placed Mon. well
over Mon.

"No Attempt Was Made To Verify Monument(s)"

FP = Fence Post

GP = Guy Post

JP = Joint Pole

PP = Power Pole

SP = Service Pole

TP = Telephone Pole

N.T.S. = Not To Scale

Fd. = Conc. Nails with Brass Washers Stamped "S.J. Co.", unless otherwise noted