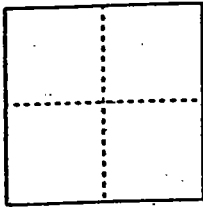


CORNER RECORD

Document Number 00-20  
County of San Joaquin, California

City of \_\_\_\_\_

Brief Legal Description Manthey Road 265't Southeasterly of Hospital  
Road



CORNER TYPE

- Government Corner  Control
- Meander  Property
- Rancho  Other

Date of Survey 12-3-99

COORDINATES (Optional)

N. \_\_\_\_\_  
 E. \_\_\_\_\_  
 Zone \_\_\_\_\_ NAD27  NAD83   
 NAD83 Epoch \_\_\_\_\_  
 Elev. \_\_\_\_\_  
 Vert. Datum: NGVD29  NAVD88   
 Meas. Units: Metric  Imperial

Corner - Left as found  Found and tagged  Established  Reestablished  Rebuilt

Identification and type of corner found: Evidence used to identify or procedure used to establish or reestablish the corner:  
Found 3/4" pin and washer (not tagged) per swing ties on  
C.R. - 00-19.

See sketch on backside.

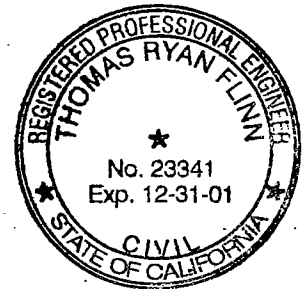
A description of the physical condition of the monument as found and as set or reset: Found 3/4" pin and  
washer (Not tagged) in good condition and placed Mon. well over  
Mon.

See sketch on backside.

SURVEYOR'S STATEMENT

This Corner Record was prepared by me or under my direction in conformance with  
the Land Surveyors' Act on 12/31/1999, 2000.

Signed [Signature] L.S. or R.C.E. Number 23341



COUNTY SURVEYOR'S STATEMENT

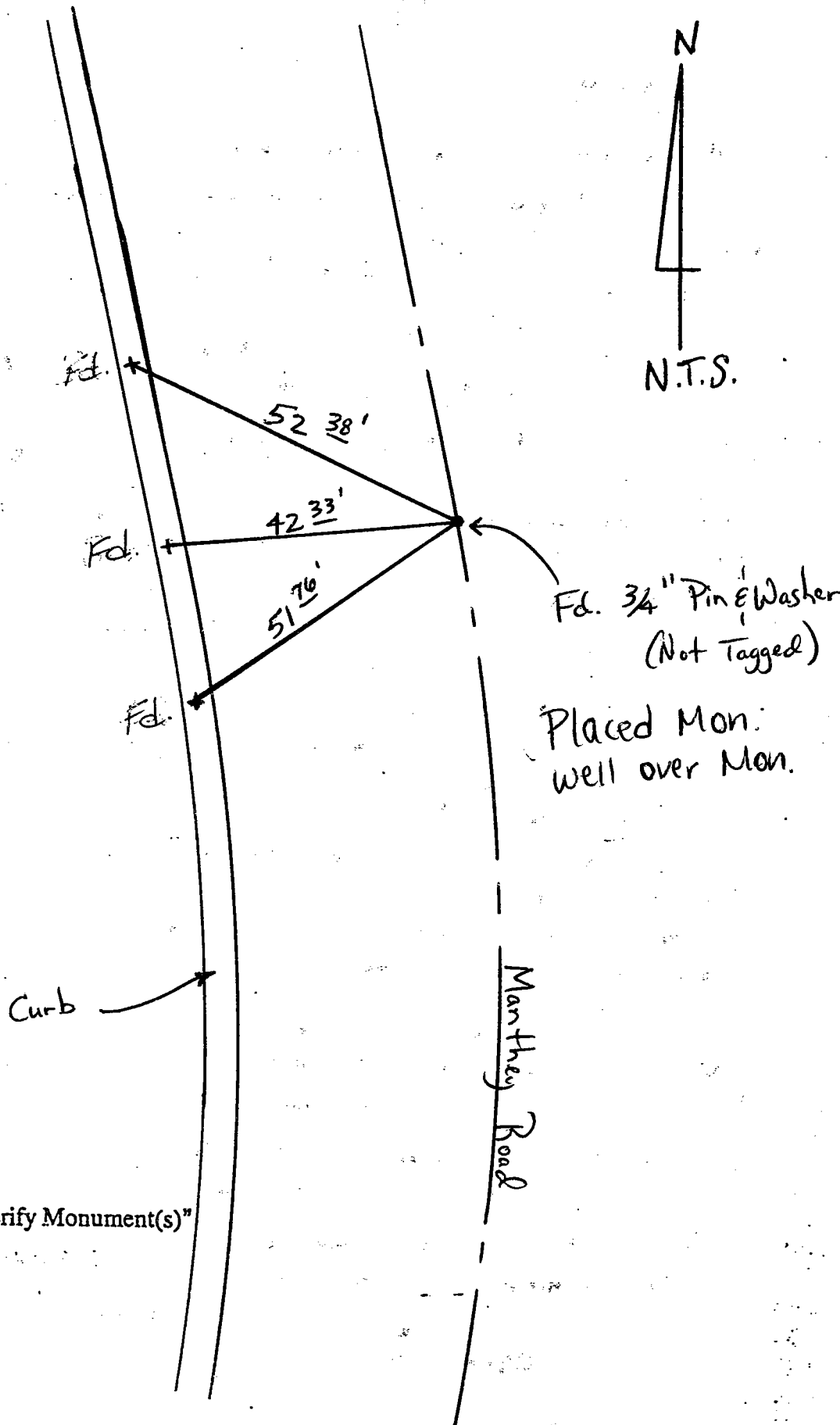
This Corner Record was received 2-1-, 2000 and examined  
and filed 2-2-, 2000.

Signed Henry M. Hirata R.C.E. No. 21258  
Title County Surveyor



County Surveyors Comment \_\_\_\_\_

All "Fd." are chiseled  
Crosses "+" on top of  
Concrete Curb



Placed Mon.  
well over Mon.

"No Attempt Was Made To Verify Monument(s)"

FP = Fence Post

GP = Guy Post

JP = Joint Pole

PP = Power Pole

SP = Service Pole

TP = Telephone Pole

N.T.S. = Not To Scale

Fd. = Conc. Nails with Brass Washers Stamped "S.J. Co.", unless otherwise noted