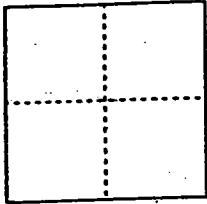


CORNER RECORD

Document Number 00-19  
County of San Joaquin, California

City of \_\_\_\_\_

Brief Legal Description Manthey Road 265<sup>th</sup> Southeasterly of Hospital Road



CORNER TYPE

- Government Corner  Control
- Meander  Property
- Rancho  Other

Date of Survey 10-4-99

COORDINATES (Optional)

N. \_\_\_\_\_  
 E. \_\_\_\_\_  
 Zone \_\_\_\_\_ NAD27  NAD83   
 NAD83 Epoch \_\_\_\_\_  
 Elev. \_\_\_\_\_  
 Vert. Datum: NGVD29  NAVD88   
 Meas. Units: Metric  Imperial

Corner - Left as found  Found and tagged  Established  Reestablished  Rebuilt

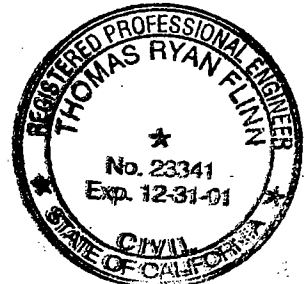
Identification and type of corner found: Evidence used to identify or procedure used to establish or reestablish the corner:  
See sketch on backside

A description of the physical condition of the monument as found and as set or reset:  
Found Monument in good condition  
See sketch on backside.

SURVEYOR'S STATEMENT

This Corner Record was prepared by me or under my direction in conformance with the Land Surveyors' Act on 11/2/31/1999, 2000.

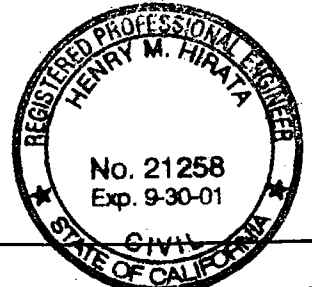
Signed [Signature] L.S. or R.C.E. Number 23341



COUNTY SURVEYOR'S STATEMENT

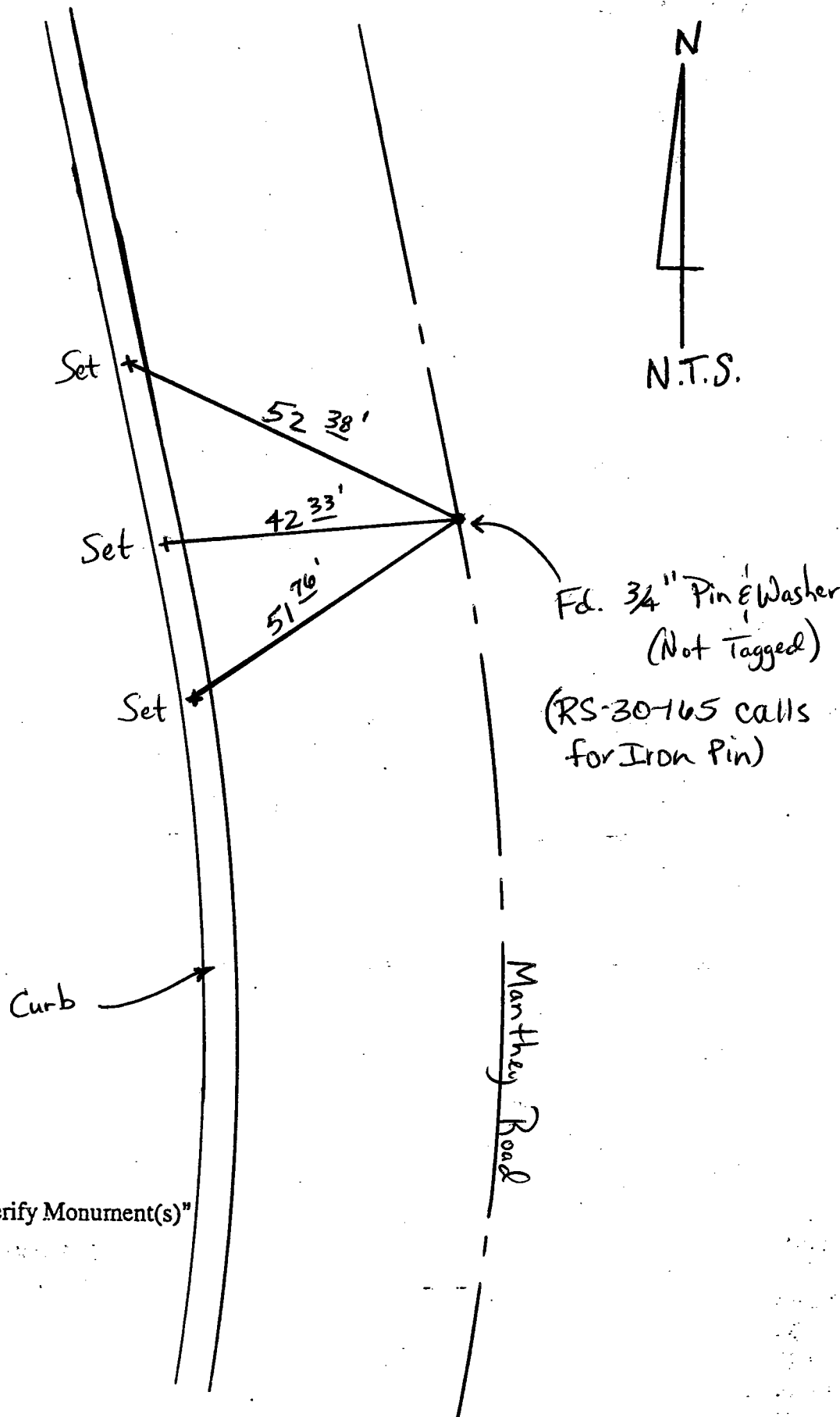
This Corner Record was received 2-1-, 2000 and examined and filed 2-2-, 2000.

Signed Henry M. Hirata R.C.E. No. 21258  
Title County Surveyor



County Surveyors Comment \_\_\_\_\_

All "Set" are chiseled  
Crosses "+" on top of  
Concrete Curb



Fd. 3/4" Pin & Washer  
(Not Tagged)  
(RS-30-165 calls  
for Iron Pin)

"No Attempt Was Made To Verify Monument(s)"

- FP = Fence Post
- GP = Guy Post
- JP = Joint Pole
- PP = Power Pole
- SP = Service Pole
- TP = Telephone Pole
- N.T.S. = Not To Scale