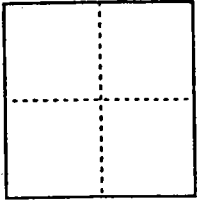


CORNER RECORD

Document Number 00-18  
County of San Joaquin, California

City of \_\_\_\_\_

Brief Legal Description Manthey Road 750' ± Southeasterly of French Camp Road  
(No Record)



CORNER TYPE

Government Corner  Control   
Meander  Property   
Rancho  Other   
Date of Survey 12-3-99

COORDINATES (Optional)

N. \_\_\_\_\_  
E. \_\_\_\_\_  
Zone \_\_\_\_\_ NAD27  NAD83   
NAD83 Epoch \_\_\_\_\_  
Elev. \_\_\_\_\_  
Vert. Datum: NGVD29  NAVD88   
Meas. Units: Metric  Imperial

Corner - Left as found  Found and tagged  Established  Reestablished  Rebuilt

Identification and type of corner found: Evidence used to identify or procedure used to establish or reestablish the corner:  
Reestablished location of Found 3/4" Pin and Washer (Not Tagged) (No Record) per  
Swings on C.B. 200-17  
See sketch on Backside

A description of the physical condition of the monument as found and as set or reset: Ed. 3/4" Pin and Washer  
(Not Tagged) (No Record) in good condition and placed Mon. well over Mon.  
See sketch on Backside

SURVEYOR'S STATEMENT

This Corner Record was prepared by me or under my direction in conformance with the Land Surveyors' Act on 12/31/1999

Signed \_\_\_\_\_ L.S. or R.C.E. Number 23541



COUNTY SURVEYOR'S STATEMENT

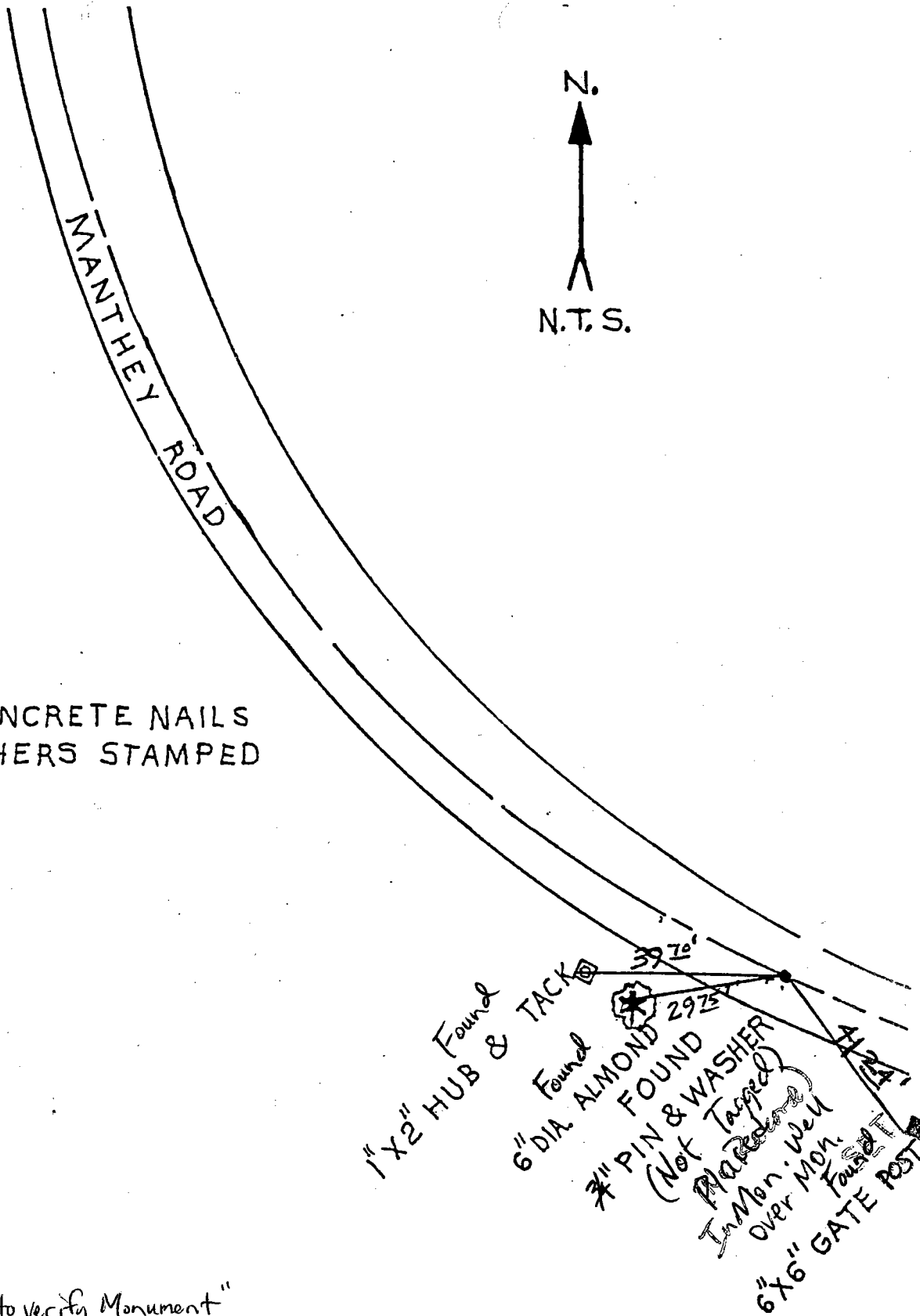
This Corner Record was received 2-1-2000 and examined and filed 2-2-2000

Signed Henry M. Hirata R.C.E. No. 21258  
Title County Surveyor



County Surveyors Comment \_\_\_\_\_

(D.D. Sheet No. 31)



ALL "Found" ARE CONCRETE NAILS  
 & BRASS WASHERS STAMPED  
 S. J. CO.

"No attempt was made to verify Monument"