

CORNER RECORD

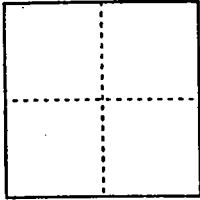
Document Number 00-17
County of San Joaquin, California

City of _____

Brief Legal Description Manthey Road 750'± Southeasterly of French Camp Road
(No Record)

CORNER TYPE

COORDINATES (Optional)



Government Corner Control
Meander Property
Rancho Other
Date of Survey 10-4-99

N. _____
E. _____
Zone _____ NAD27 NAD83
NAD83 Epoch _____
Elev. _____
Vert. Datum: NGVD29 NAVD88
Meas. Units: Metric Imperial

Corner - Left as found Found and tagged Established Reestablished Rebuilt

Identification and type of corner found: Evidence used to identify or procedure used to establish or reestablish the corner:

See Sketch on Backside

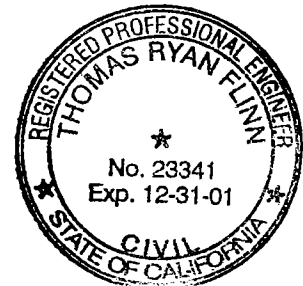
A description of the physical condition of the monument as found and as set or reset:

Found Monument in good condition
See Sketch on Backside

SURVEYOR'S STATEMENT

This Corner Record was prepared by me or under my direction in conformance with the Land Surveyors' Act on 17/31/1999

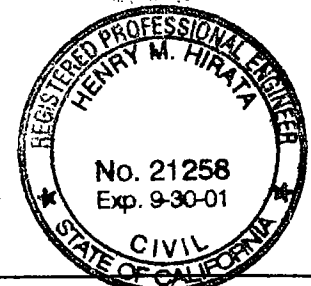
Signed [Signature] L.S. or R.C.E. Number 23341



COUNTY SURVEYOR'S STATEMENT

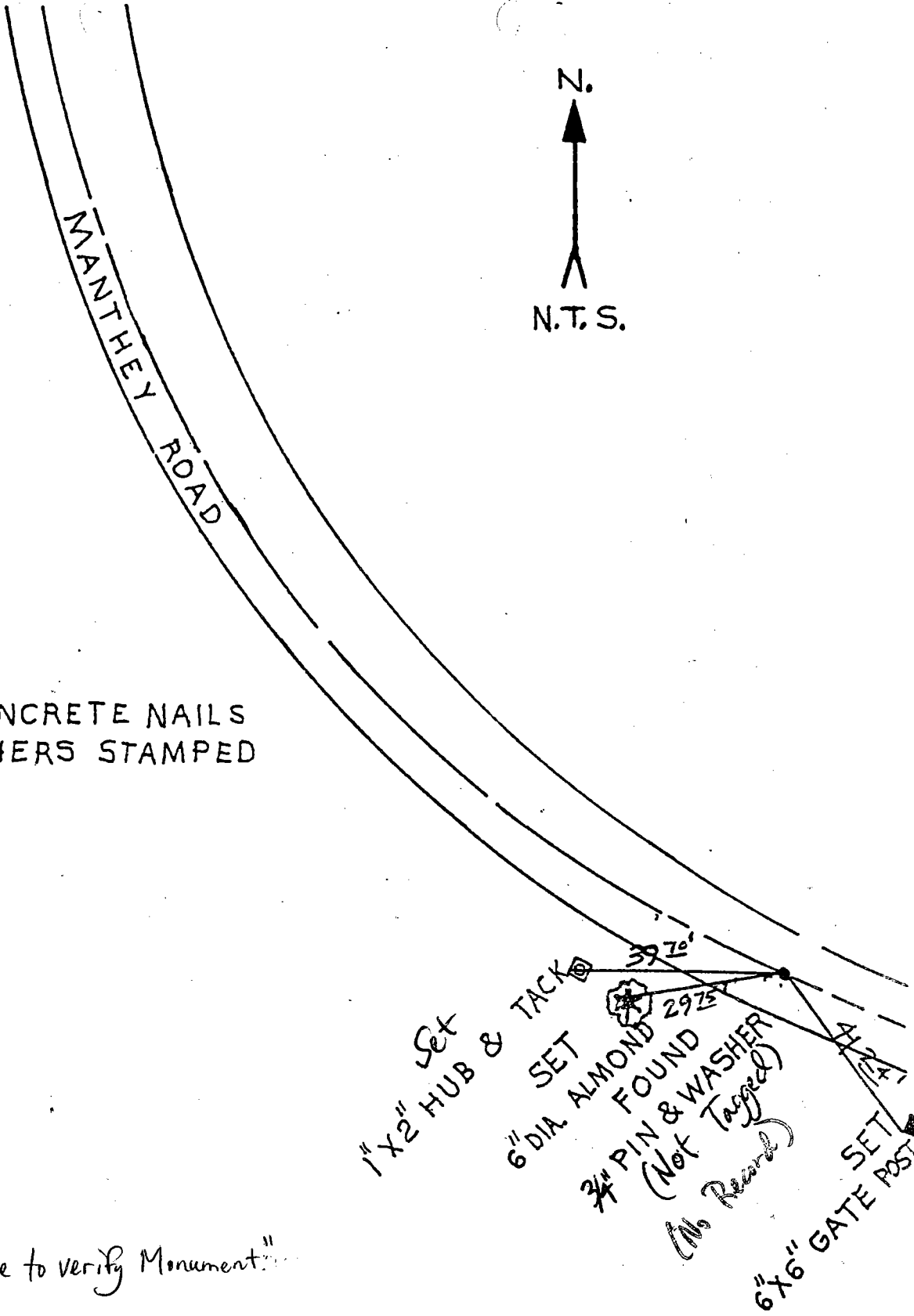
This Corner Record was received 2-1-2000 and examined and filed 2-2-2000

Signed Henry M. Hirata R.C.E. No. 21258
Title _____ County Surveyor



County Surveyors Comment _____

(D.D. Sheet No. 31)



ALL "SET" ARE CONCRETE NAILS
& BRASS WASHERS STAMPED
S. J. CO.

"No attempt was made to verify Monument."