

CORNER RECORD

Document Number 00-15

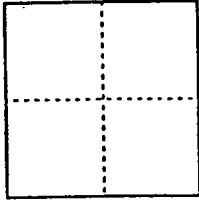
City of _____

County of San Joaquin, California

Brief Legal Description Manthey Road 1475'± Southeastly of French Camp Rd., and Manthey Road 990'± Southeastly of French Camp Road (No Record)

CORNER TYPE

COORDINATES (Optional)



Government Corner Control
Meander Property
Rancho Other
Date of Survey 10-4-99

N. _____
E. _____
Zone _____ NAD27 NAD83
NAD83 Epoch _____
Elev. _____
Vert. Datum: NGVD29 NAVD88
Meas. Units: Metric Imperial

Corner - Left as found Found and tagged Established Reestablished Rebuilt

Identification and type of corner found: Evidence used to identify or procedure used to establish or reestablish the corner:

Found 3/4" Pin and Washer (Not Tagged) 1475'± Southeastly of French Camp Road (No Record); and See Sketch on Backside (Not Tagged) on Manthey Rd 990'± Souther

A description of the physical condition of the monument as found and as set or reset:

Found Monuments are in good condition.
See Sketch on Backside

SURVEYOR'S STATEMENT

This Corner Record was prepared by me or under my direction in conformance with the Land Surveyors' Act on 12/31/1999

Signed [Signature] L.S. or R.C.E. Number 23341



COUNTY SURVEYOR'S STATEMENT

This Corner Record was received 2-1-2000 and examined and filed 2-2-2000

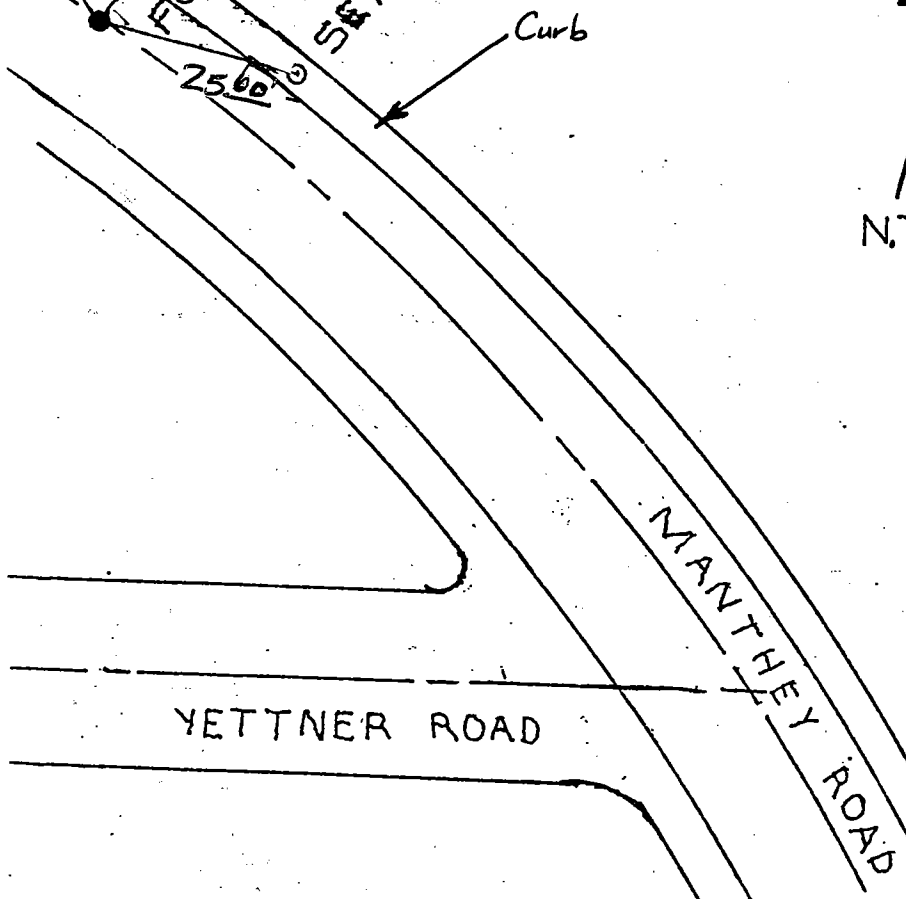
Signed Henry M. Hirata R.C.E. No. 21258
Title County Surveyor



County Surveyors Comment _____

(D.D. Sheet No. 34)

SET
12 72'
FOUND PIN & WASHER
3/4" (Not Tagged)
SET
25 60'



ALL SETS ARE P.K. NAILS AND BRASS WASHERS, SET IN THE EXPANSION JOINTS OF THE CONCRETE CURB, & STAMPED 'S.J. CO.'

"No attempt was made to verify Monuments"

Found 3/4" pin & washer (Not tagged)

