

CORNER RECORD

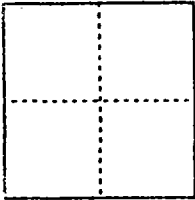
Document Number 00-14  
County of San Joaquin, California

City of \_\_\_\_\_

Brief Legal Description Manthey Road 2150'± Northwesterly of Hospital Road (No Record)  
and 2140'± Southeasterly of French Camp Rd. (No Record)

CORNER TYPE

COORDINATES (Optional)



Government Corner  Control   
Meander  Property   
Rancho  Other   
Date of Survey 12-8-99

N. \_\_\_\_\_  
E. \_\_\_\_\_  
Zone \_\_\_\_\_ NAD27  NAD83   
NAD83 Epoch \_\_\_\_\_  
Elev. \_\_\_\_\_  
Vert. Datum: NGVD29  NAVD88   
Meas. Units: Metric  Imperial

Corner - Left as found  Found and tagged  Established  Reestablished  Rebuilt

Identification and type of corner found: Evidence used to identify or procedure used to establish or reestablish the corner:  
Reestablished location of Found 3/4" Pins & Washers (Not Tagged) (No Record)  
per Swings on C.R. #000-13.  
See Sketch on Backside

A description of the physical condition of the monument as found and as set or reset: Ed. 3/4" Pins & Washers  
(Not Tagged) (No Record) are in good condition and placed Mon. Wells  
over both Monuments. See Sketch on Backside

SURVEYOR'S STATEMENT

This Corner Record was prepared by me or under my direction in conformance with the Land Surveyors' Act on 12/31/1999

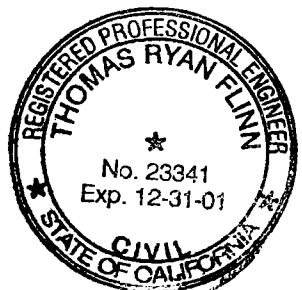
Signed \_\_\_\_\_ L.S. or R.C.E. Number 25341

COUNTY SURVEYOR'S STATEMENT

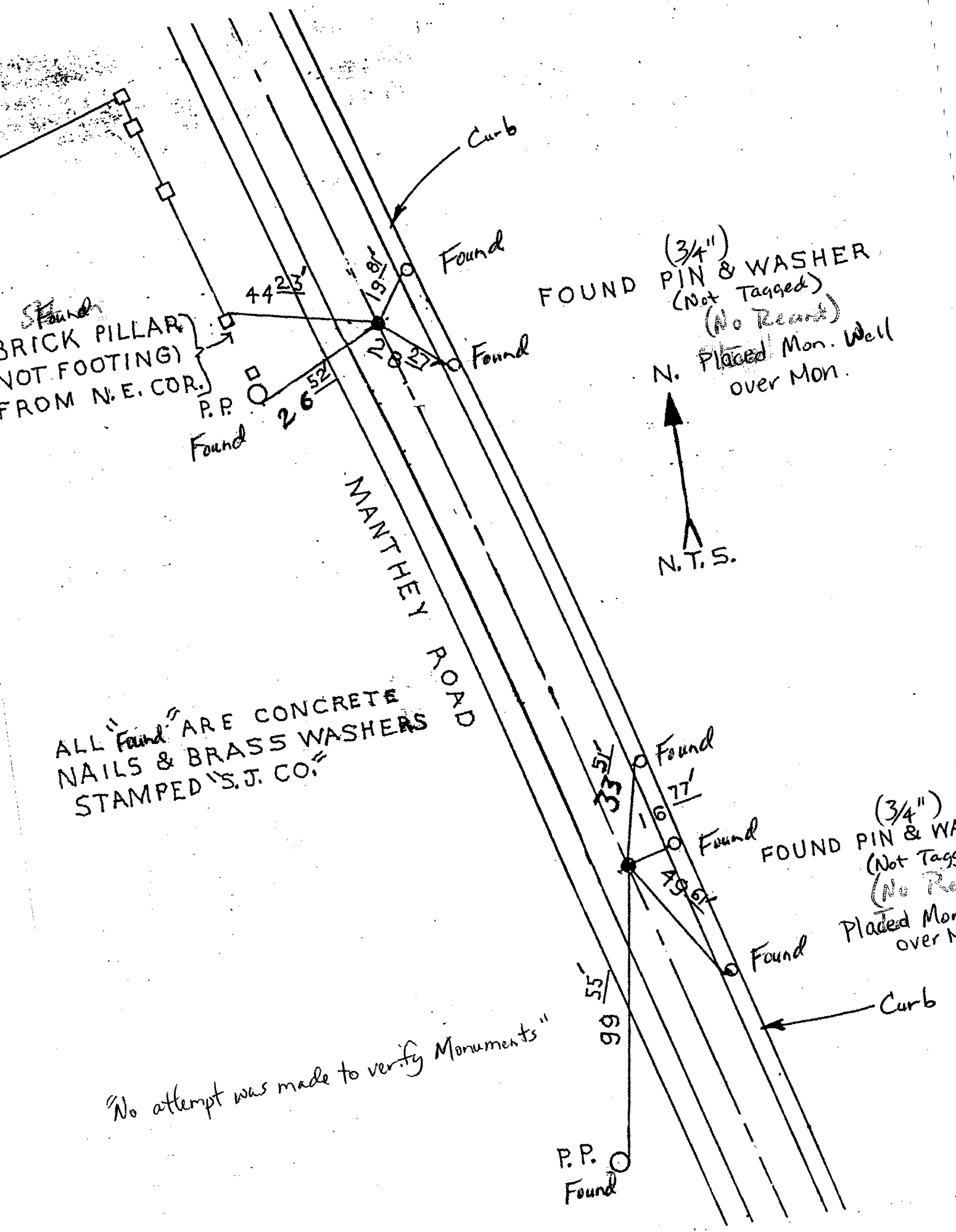
This Corner Record was received 2-1-2000, and examined and filed 2-2-2000

Signed Henry M. Hirata R.C.E. No. 21258  
Title County Surveyor

County Surveyors Comment \_\_\_\_\_



(D.D. Sheet No. 34 )



Found  
BRICK PILLAR  
(NOT FOOTING)  
FROM N.E. COR.

FOUND (3/4")  
PIN & WASHER  
(Not Tagged)  
(No Record)  
Placed Mon. Well  
over Mon.



ALL "Found" ARE CONCRETE  
NAILS & BRASS WASHERS  
STAMPED "S.J. CO."

FOUND (3/4")  
PIN & WASHER  
(Not Tagged)  
(No Record)  
Placed Mon. W.  
over Mon.

No attempt was made to verify Monuments"

P.P.  
Found