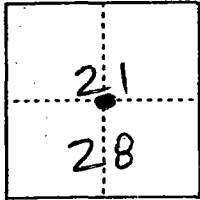


CORNER RECORD

Document Number 00-11
County of San Joaquin, California

City of _____

Brief Legal Description near S.W. Corner of S.E. 1/4 of Section 21, T.1S., R.8E. per
PM-20-182.



T.1S., R.8E.

CORNER TYPE

Government Corner Control
Meander Property
Rancho Other
Date of Survey 11-9-99

COORDINATES (Optional)

N. _____
E. _____
Zone _____ NAD27 NAD83
NAD83 Epoch _____
Elev. _____
Vert. Datum: NGVD29 NAVD88
Meas. Units: Metric Imperial

Corner - Left as found Found and tagged Established Reestablished Rebuilt

Identification and type of corner found: Evidence used to identify or procedure used to establish or reestablish the corner:

See Sketch on Backside

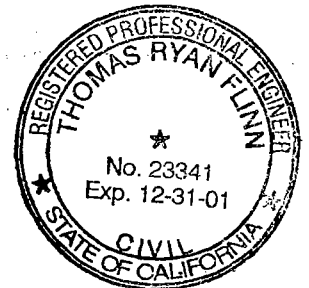
A description of the physical condition of the monument as found and as set or reset:

Found Monument in good condition. See Sketch on Backside.

SURVEYOR'S STATEMENT

This Corner Record was prepared by me or under my direction in conformance with the Land Surveyors' Act on 12/31/1999

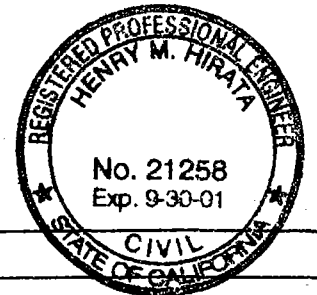
Signed [Signature] L.S. or R.C.E. Number 23341



COUNTY SURVEYOR'S STATEMENT

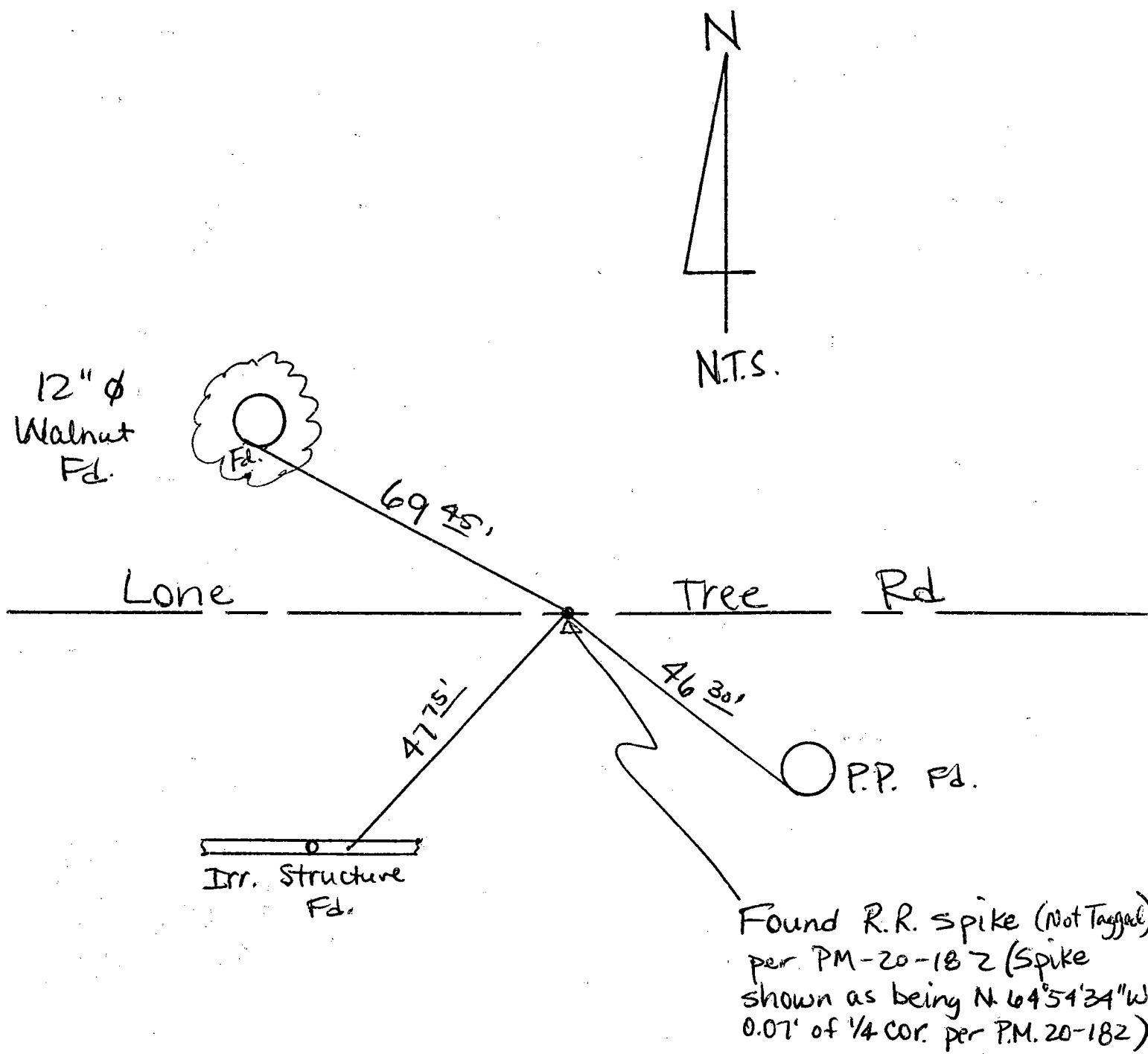
This Corner Record was received 2-1-2000 and examined and filed 2-2-2000

Signed Henry M. Hirata R.C.E. No. 21258
Title County Surveyor



County Surveyors Comment _____

(D.D. Sheet No. 45)



Note: Found ties are nails & washers stamped "S.J. Co"

"No attempt was made to verify Monuments"