

CORNER RECORD

Document Number 00-10  
County of San Joaquin, California

City of \_\_\_\_\_

Brief Legal Description S.E. Corner of Section 20, T.1S., R.8E. per PM-20-182

T.1S., R.8E.

20	21
29	28

CORNER TYPE  
 Government Corner  Control   
 Meander  Property   
 Rancho  Other   
 Date of Survey 12-9-99

COORDINATES (Optional)  
 N. \_\_\_\_\_  
 E. \_\_\_\_\_  
 Zone \_\_\_\_\_ NAD27  NAD83   
 NAD83 Epoch \_\_\_\_\_  
 Elev. \_\_\_\_\_  
 Vert. Datum: NGVD29  NAVD88   
 Meas. Units: Metric  Imperial

Corner - Left as found  Found and tagged  Established  Reestablished  Rebuilt

Identification and type of corner found: Evidence used to identify or procedure used to establish or reestablish the corner:  
Reestablished location of Found 1/2" Iron Pipe (Not Tagged) per PM-20-182.  
per Swings on C.R. - 00-09  
Ties See Sketch on Backside

A description of the physical condition of the monument as found and as set or reset: Fd. 1/2" Iron Pipe (Not Tagged) per PM-20-182 in good condition, set 3/4" Rebar Tagged with Washer (Brass) Stamped "S.J.Co." inside of 1/2" Iron Pipe per Swings on C.R. 99- and placed Mon. Well over Mon.  
See Sketch on Backside

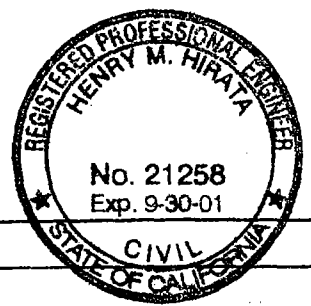
SURVEYOR'S STATEMENT

This Corner Record was prepared by me or under my direction in conformance with the Land Surveyors' Act on 12/31/1999.  
Signed \_\_\_\_\_ L.S. or R.C.E. Number 23341



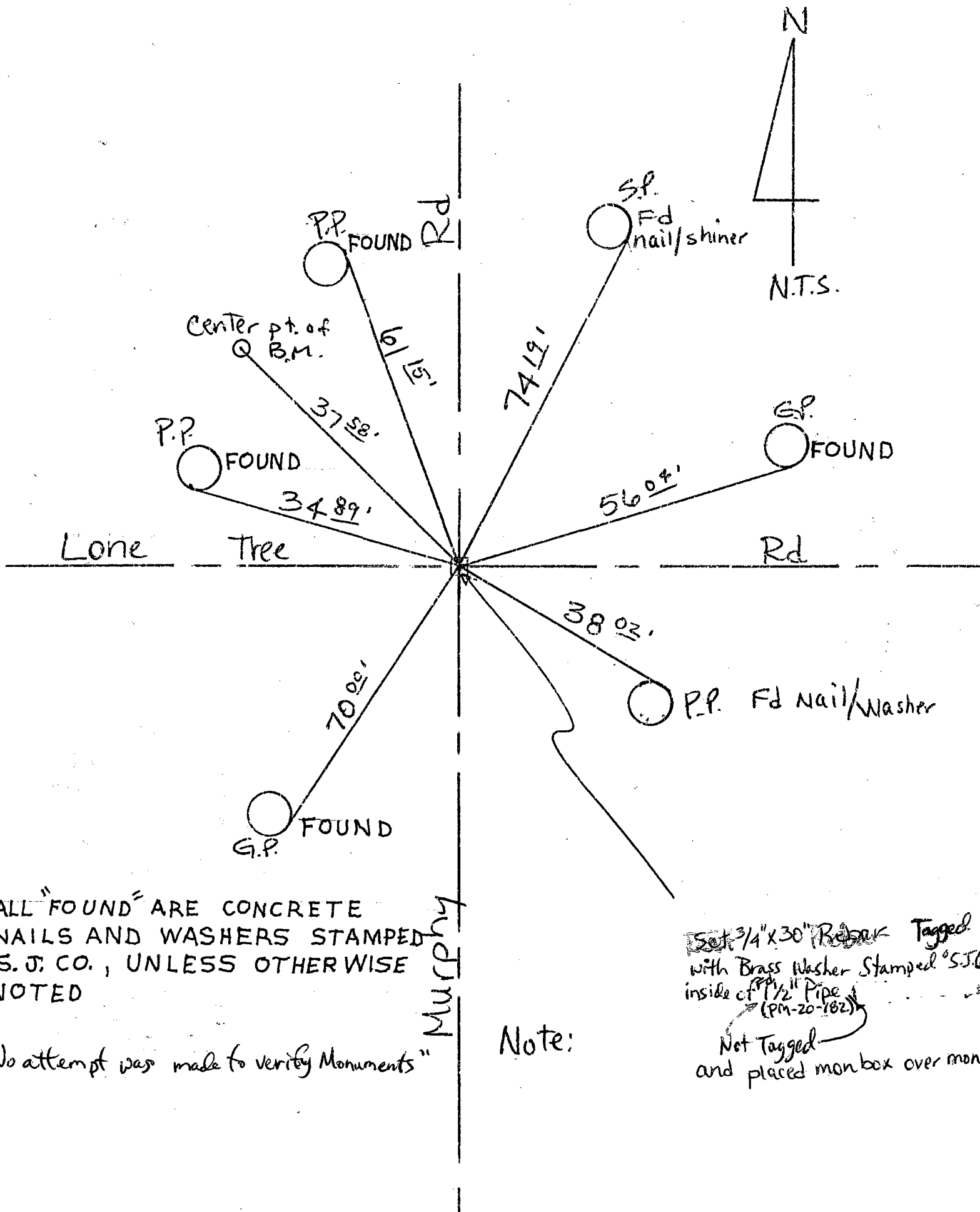
COUNTY SURVEYOR'S STATEMENT

This Corner Record was received 2-1-2000 and examined and filed 2-2-2000.  
Signed Henry M. Hirata R.C.E. No. 21258  
Title \_\_\_\_\_ County Surveyor



County Surveyors Comment \_\_\_\_\_

(D.D. Sheet No. 45)



ALL "FOUND" ARE CONCRETE NAILS AND WASHERS STAMPED S. J. CO., UNLESS OTHERWISE NOTED

"No attempt was made to verify Monuments"

Murphy

Note:

Set 3/4" x 30" Rebar Tagged with Brass Washer Stamped "S.J.C." inside of 1 1/2" Pipe (PM-20-182) Not Tagged and placed mon box over mon.