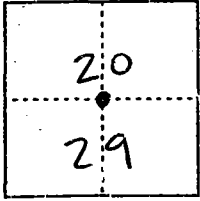


CORNER RECORD

Document Number 00-07
County of San Joaquin, California

City of _____

Brief Legal Description S.E. Corner of S.W. 1/4 of Section 20, T.1S., R.8E
per PM-20-178



T.1S., R.8E.

CORNER TYPE

Government Corner Control
Meander Property
Rancho Other

Date of Survey 11-9-99

COORDINATES (Optional)

N. _____
E. _____
Zone _____ NAD27 NAD83
NAD83 Epoch _____
Elev. _____
Vert. Datum: NGVD29 NAVD88
Meas. Units: Metric Imperial

Corner - Left as found Found and tagged Established Reestablished Rebuilt

Identification and type of corner found: Evidence used to identify or procedure used to establish or reestablish the corner:

See Sketch on Backside

A description of the physical condition of the monument as found and as set or reset:

Found Monument in good condition
See Sketch on Backside

SURVEYOR'S STATEMENT

This Corner Record was prepared by me or under my direction in conformance with the Land Surveyors' Act of 12/31/1999

Signed _____ L.S. or R.C.E. Number 23341

COUNTY SURVEYOR'S STATEMENT

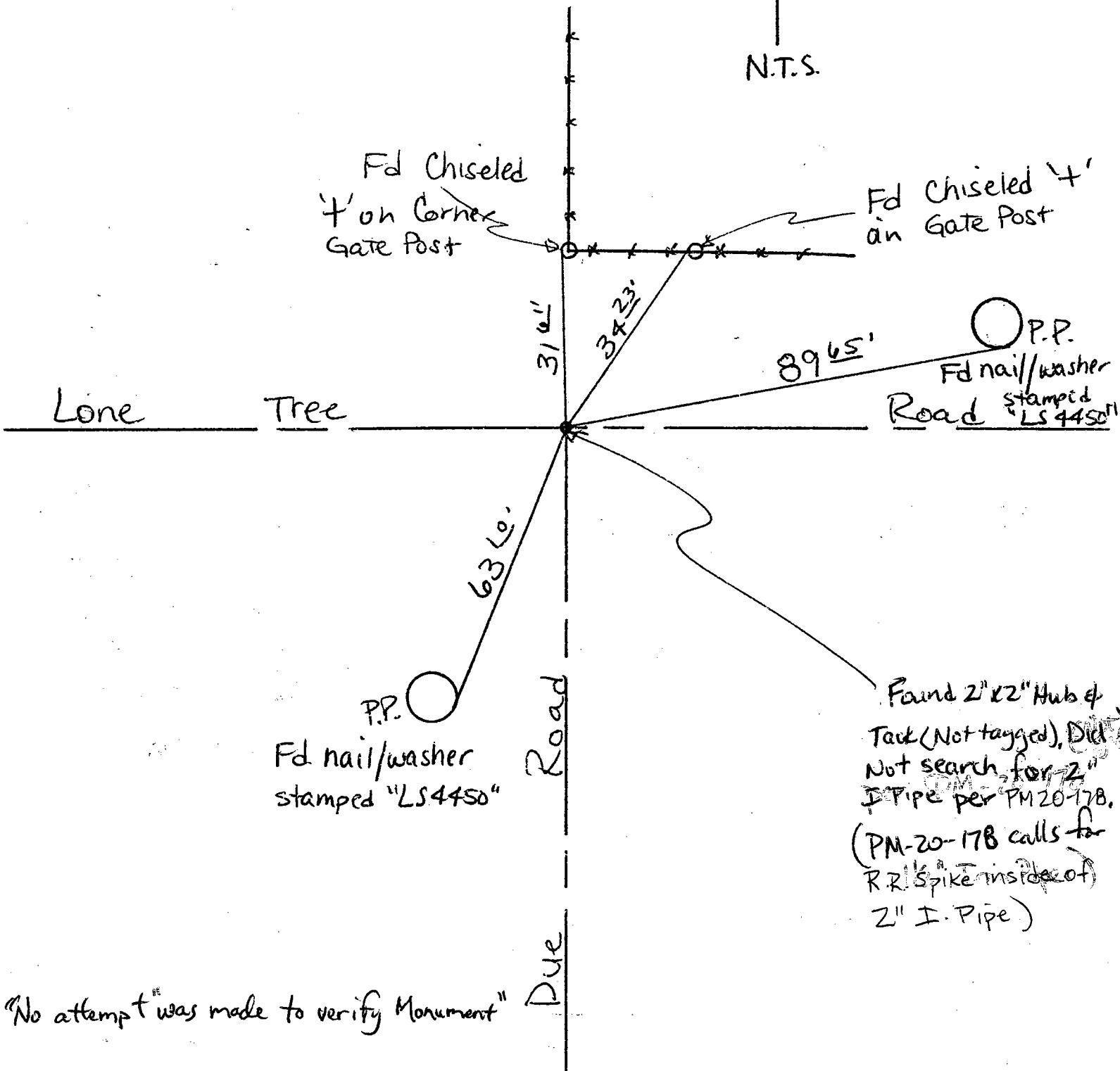
This Corner Record was received 2-1-2000 and examined and filed 2-2-, 2000

Signed Henry M. Hirata R.C.E. No. 21258
Title County Surveyor

County Surveyors Comment _____



(D.D. Sheet No. 45)



Fd Chiseled
+ on Corner
Gate Post

Fd Chiseled +
on Gate Post

316'

3723'

8965'

P.P.

Fd nail/washer
stamped
LS4450

Lone Tree

6360'

P.P.

Fd nail/washer
stamped "LS4450"

Road

Due

Found 2" x 2" Hub &
Tack (Not tagged), Did
Not search for 2"
I.P. Pipe per PM-20-178,
(PM-20-178 calls for
R.R. Spike inside of
2" I. Pipe)

"No attempt was made to verify Monument"