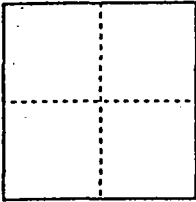


CORNER RECORD

Document Number 00-03
County of San Joaquin, California

City of _____

Brief Legal Description INTERSECTION OF MARIPOSA ROAD
AND BRENNAN ROAD



CORNER TYPE

Government Corner Control
Meander Property
Rancho Other
Date of Survey 10-4-99

COORDINATES (Optional)

N. _____
E. _____
Zone _____ NAD27 NAD83
NAD83 Epoch _____
Elev. _____
Vert. Datum: NGVD29 NAVD88
Meas. Units: Metric Imperial

Corner - Left as found Found and tagged Established Reestablished Rebuilt

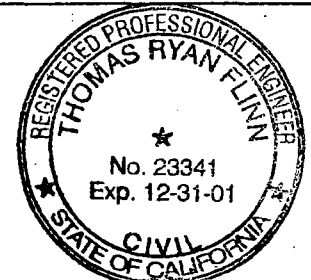
Identification and type of corner found: Evidence used to identify or procedure used to establish or reestablish the corner:
SEE SKETCH ON BACK

A description of the physical condition of the monument as found and as set or reset:
FOUND MONUMENT IN GOOD CONDITION
SEE SKETCH ON BACK

SURVEYOR'S STATEMENT

This Corner Record was prepared by me or under my direction in conformance with the Land Surveyors' Act on 12/31/1999

Signed [Signature] L.S. or R.C.E. Number 23341



COUNTY SURVEYOR'S STATEMENT

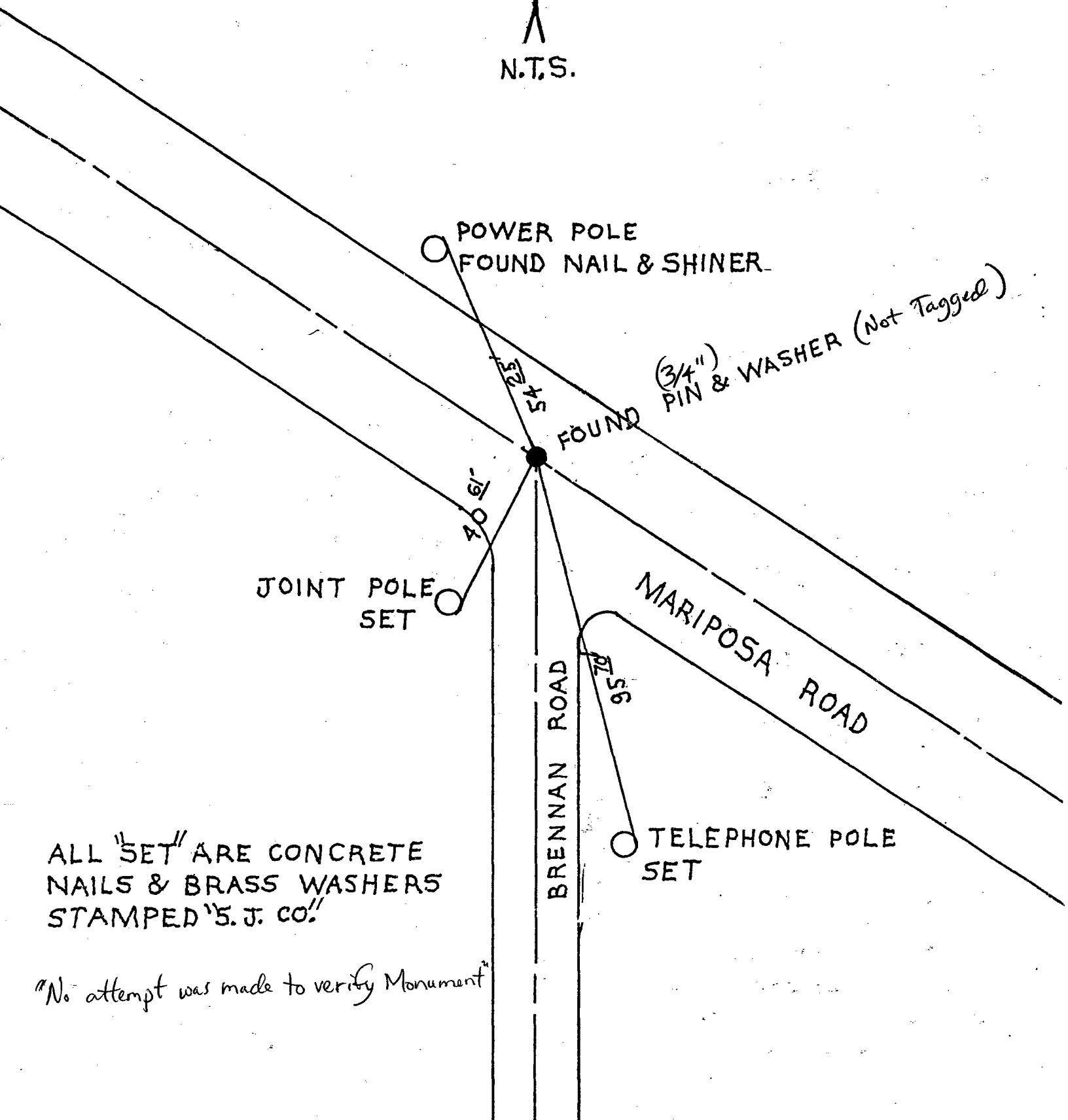
This Corner Record was received 2-1-2000 and examined and filed 2-2-2000

Signed Henry M. Hirata R.C.E. No. 21258
Title County Surveyor



County Surveyors Comment _____

(D.D. Sheet No. 43)



POWER POLE
FOUND NAIL & SHINER.

(3/4")
PIN & WASHER (Not Tagged)

FOUND

JOINT POLE
SET

MARIPOSA ROAD

BRENNAN ROAD

TELEPHONE POLE
SET

ALL "SET" ARE CONCRETE
NAILS & BRASS WASHERS
STAMPED "S. J. CO."

"No attempt was made to verify Monument"