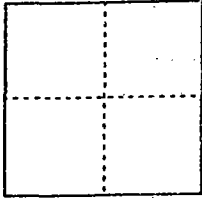


CORNER RECORD

Document Number 00-02
County of San Joaquin, California

City of _____

Brief Legal Description Intersection of Mariposa Road and Van Allen Road per
PM-19-172



CORNER TYPE

Government Corner Control
Meander Property
Rancho Other
Date of Survey 12-21-99

COORDINATES (Optional)

N. _____
E. _____
Zone _____ NAD27 NAD83
NAD83 Epoch _____
Elev. _____
Vert. Datum: NGVD29 NAVD88
Meas. Units: Metric Imperial

Corner - Left as found Found and tagged Established Reestablished Rebuilt

Identification and type of corner found: Evidence used to identify or procedure used to establish or reestablish the corner:

Reestablished location of Fd. Monuments per PM-19-172 per
Submittals on CR.-00-01.
See Sketch on Backside.

A description of the physical condition of the monument as found and as set or reset: Found Monuments per

PM-19-172 in good condition and placed Mon. Boxes over Monuments.
See Sketch on Backside

SURVEYOR'S STATEMENT

This Corner Record was prepared by me or under my direction in conformance with
the Land Surveyors' Act on 12/31/1999, 2000.

Signed [Signature] L.S. or R.C.E. Number 23541

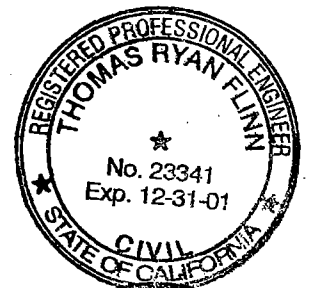
COUNTY SURVEYOR'S STATEMENT

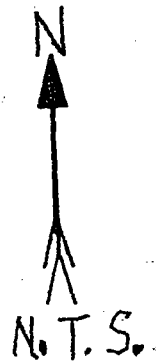
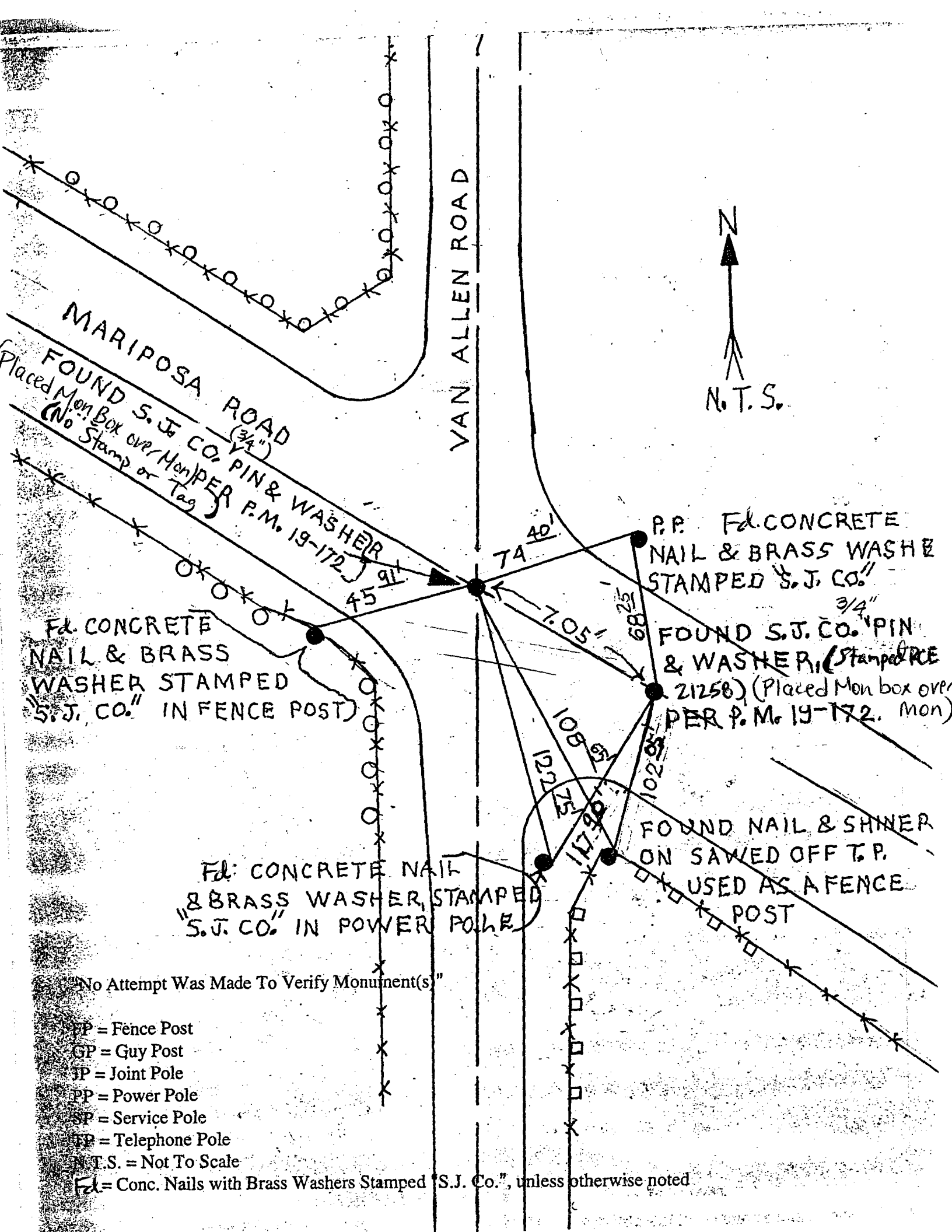
This Corner Record was received 2-1-, 2000 and examined
and filed 2-2-, 2000.

Signed Henry M. Hirata R.C.E. No. 21258

Title County Surveyor

County Surveyors Comment _____





MARIPOSA ROAD
 (3/4")
 FOUND S. J. CO. PIN & WASHER
 (Placed Mon Box over Mon) PER P.M. 19-172.
 (No Stamp or Tag)

VAN ALLEN ROAD

P.P. Fd. CONCRETE
 NAIL & BRASS WASHER
 STAMPED "S. J. CO."

FOUND S. J. CO. PIN
 & WASHER, (Stamped PCE
 21258) (Placed Mon box over
 PER P.M. 19-172. Mon)

Fd. CONCRETE
 NAIL & BRASS
 WASHER STAMPED
 "S. J. CO." IN FENCE POST

Fd. CONCRETE NAIL
 & BRASS WASHER, STAMPED
 "S. J. CO." IN POWER POLE

FOUND NAIL & SHNER
 ON SAWED OFF T.P.
 USED AS A FENCE
 POST

"No Attempt Was Made To Verify Monument(s)"

- FP = Fence Post
- GP = Guy Post
- JP = Joint Pole
- PP = Power Pole
- SP = Service Pole
- TP = Telephone Pole
- N.T.S. = Not To Scale

Fd = Conc. Nails with Brass Washers Stamped "S. J. Co.", unless otherwise noted