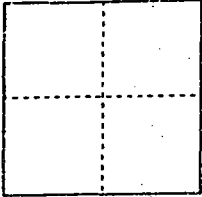


CORNER RECORD

Document Number 00-01  
County of San Joaquin, California

City of \_\_\_\_\_

Brief Legal Description Intersection of Mariposa Road and Van Allen Road per  
PM-19-172



CORNER TYPE

Government Corner  Control   
Meander  Property   
Rancho  Other   
Date of Survey 10-19-99

COORDINATES (Optional)

N. \_\_\_\_\_  
E. \_\_\_\_\_  
Zone \_\_\_\_\_ NAD27  NAD83   
NAD83 Epoch \_\_\_\_\_  
Elev. \_\_\_\_\_  
Vert. Datum: NGVD29  NAVD88   
Meas. Units: Metric  Imperial

Corner - Left as found  Found and tagged  Established  Reestablished  Rebuilt

Identification and type of corner found: Evidence used to identify or procedure used to establish or reestablish the corner:

See Sketch on Backside

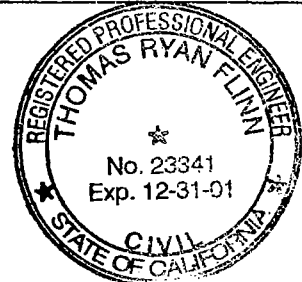
A description of the physical condition of the monument as found and as set or reset:

Found Monuments are in good condition  
See Sketch on Backside

SURVEYOR'S STATEMENT

This Corner Record was prepared by me or under my direction in conformance with the Land Surveyors' Act on 10/31/99, ~~200~~.

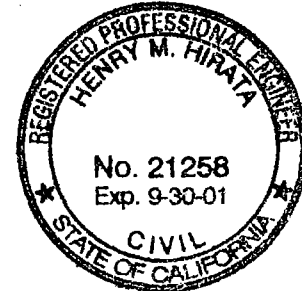
Signed [Signature] L.S. or R.C.E. Number 23341



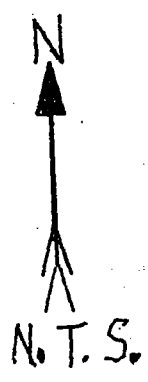
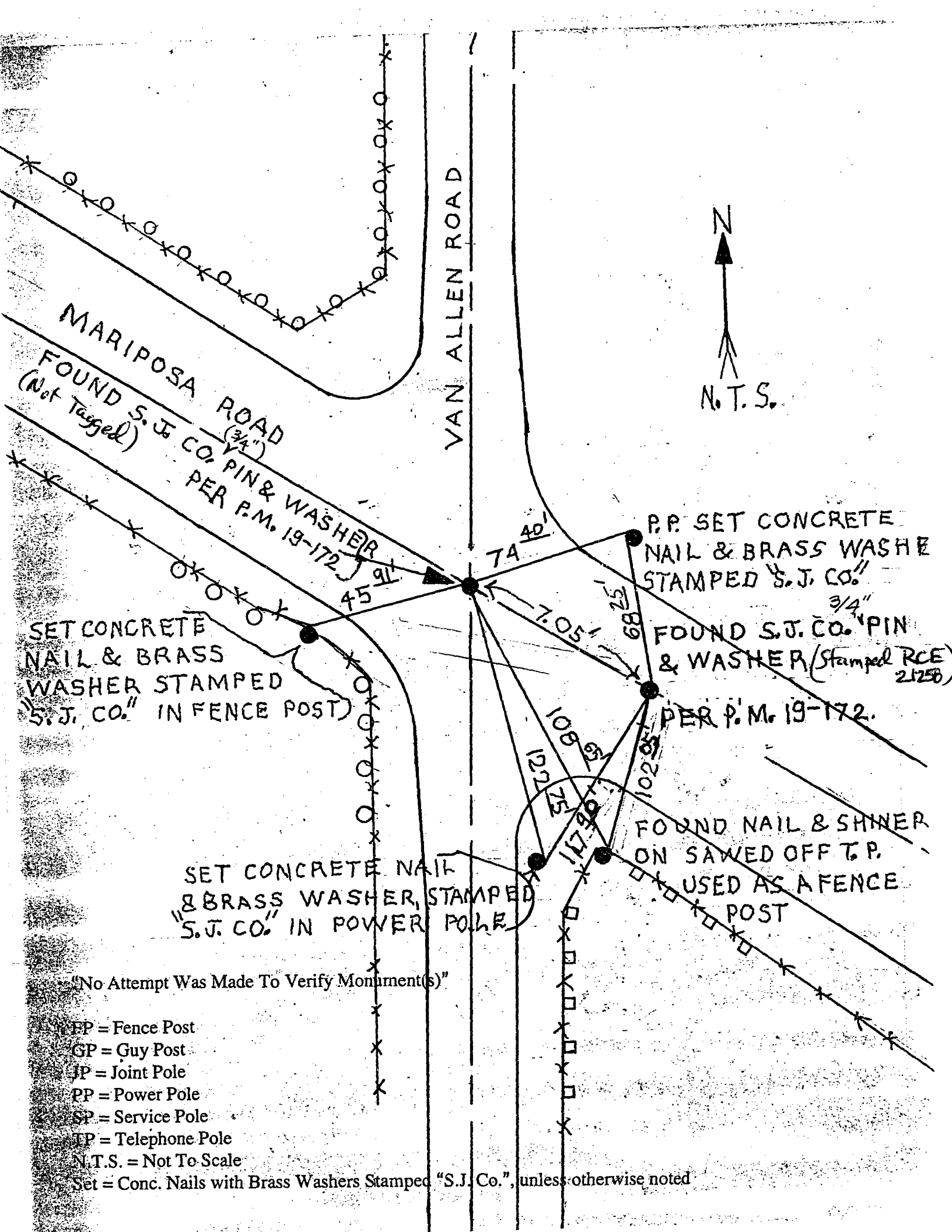
COUNTY SURVEYOR'S STATEMENT

This Corner Record was received 2-1-, 2000 and examined and filed 2-2, 2000.

Signed Henry M. Hirata R.C.E. No. 21258  
Title County Surveyor



County Surveyors Comment \_\_\_\_\_



VAN ALLEN ROAD

MARIPOSA ROAD  
(3/4")

FOUND S.J. CO. PIN & WASHER  
(Not Tagged) PER P.M. 19-172

P.P. SET CONCRETE  
NAIL & BRASS WASHER  
STAMPED "S.J. CO."

FOUND S.J. CO. "PIN  
& WASHER (Stamped RCE  
21250)  
3/4"  
PER P.M. 19-172.

SET CONCRETE  
NAIL & BRASS  
WASHER STAMPED  
"S.J. CO." IN FENCE POST

SET CONCRETE NAIL  
& BRASS WASHER, STAMPED  
"S.J. CO." IN POWER POLE

FOUND NAIL & SHINER  
ON SAWED OFF T.P.  
USED AS A FENCE  
POST

"No Attempt Was Made To Verify Monument(s)"

- FP = Fence Post
- GP = Guy Post
- JP = Joint Pole
- PP = Power Pole
- SP = Service Pole
- TP = Telephone Pole
- N.T.S. = Not To Scale

Set = Conc. Nails with Brass Washers Stamped "S.J. Co.", unless otherwise noted