

CORNER RECORD

Document Number CR-99-29
County of San Joaquin, California

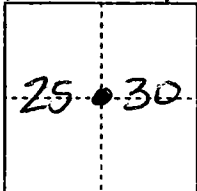
City of _____

Brief Legal Description N/W corner of SW 1/4 of Section 30, T.3N., R.8E.

T3N2E T3N2E

CORNER TYPE

COORDINATES (Optional)



Government Corner Control
Meander Property
Rancho Other

Date of Survey 10-19-99

N. _____
E. _____
Zone _____ NAD27 NAD83
NAD83 Epoch _____
Elev. _____
Vert. Datum: NGVD29 NAVD88
Meas. Units: Metric Imperial

Corner - Left as found Found and tagged Established Reestablished Rebuilt

Identification and type of corner found: Evidence used to identify or procedure used to establish or reestablish the corner:

Found RR spike^{in Mon Box} at intersection of Jack Tone Rd & Tokay Colony Rd per FB 690 pg 61 (RS 21-20 indicates nail/shiner)
No attempt was made to verify that found monument is the monument as noted in FB 690, Pg. 61

A description of the physical condition of the monument as found and as set or reset: Monument was in good condition and left as found. (Monument box was placed over monument during 1999 Jack Tone Road Resurfacing Project)

SURVEYOR'S STATEMENT

This Corner Record was prepared by me or under my direction in conformance with the Land Surveyors' Act of 19 Oct, 19 99.

Signed [Signature] R.C.E. Number 23341

COUNTY SURVEYOR'S STATEMENT

This Corner Record was received November 5, 1999 and examined and filed DECEMBER 3, 1999.

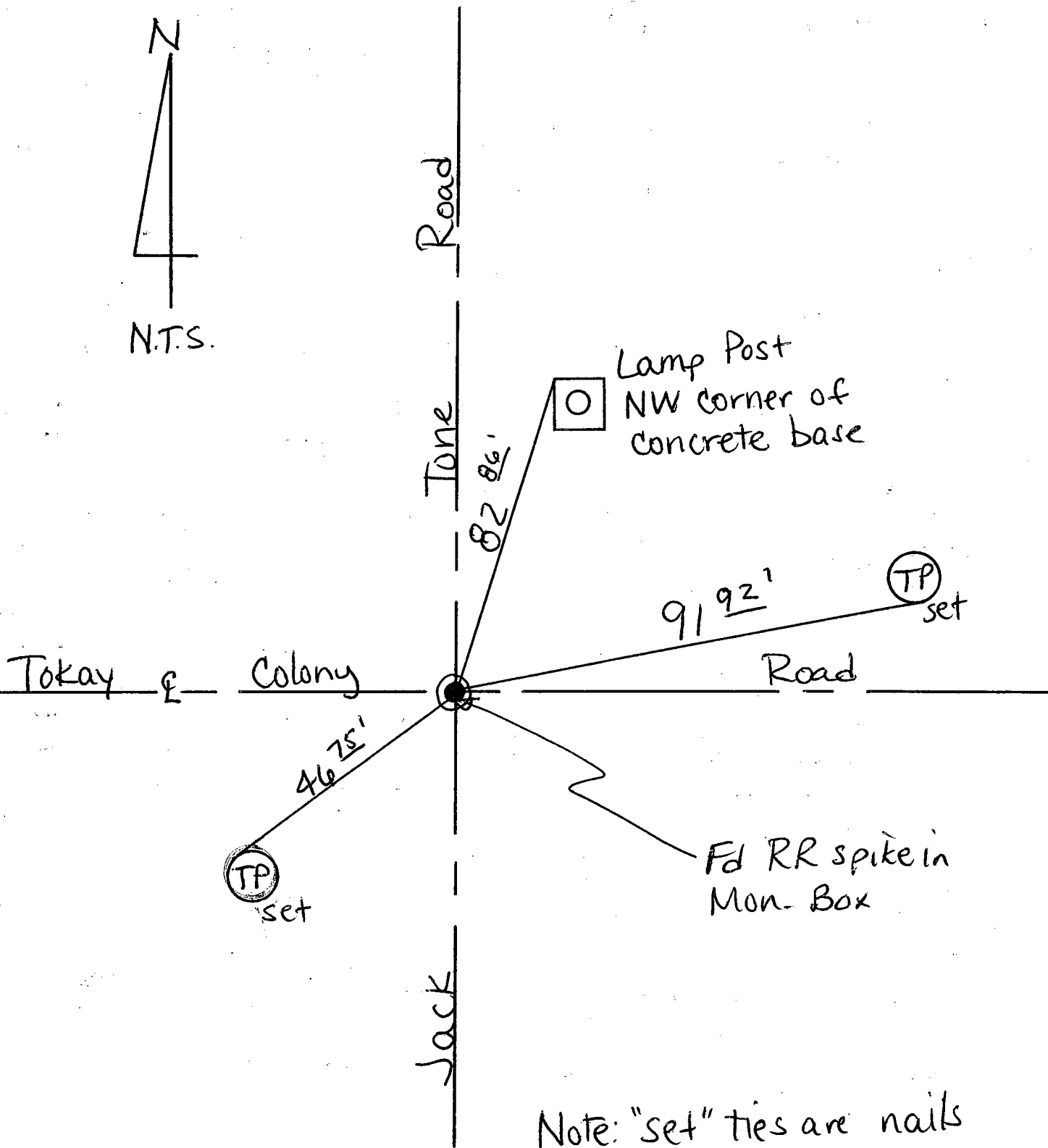
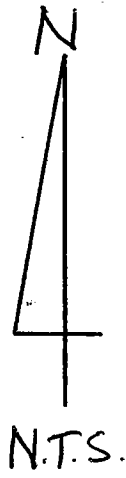
Signed [Signature] R.C.E. No. 21258
Title County Surveyor

County Surveyor's Comment _____



(D.D. Sheet No. 17 & 18)

Jerry Violet



Note: "set" ties are nails
& washers stamped
"S.J. Co."