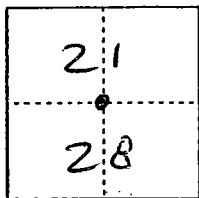


CORNER RECORD

Document Number CR-99-26
County of San Joaquin, California

City of _____

Brief Legal Description S/W corner of S/E 1/4 of Section 21, T.3N, R7E,
PER P.M. 20-1



T3N, R7E

CORNER TYPE

Government Corner Control
Meander Property
Rancho Other

Date of Survey 10-21-99

COORDINATES (Optional)

N. _____
E. _____
Zone _____ NAD27 NAD83
NAD83 Epoch _____
Elev. _____
Vert. Datum: NGVD29 NAVD88
Meas. Units: Metric Imperial

Corner - Left as found Found and tagged Established Reestablished Rebuilt

Identification and type of corner found: Evidence used to identify or procedure used to establish or reestablish the corner:

Found bolt & washer stamped "LS 2239" in monument
box per PM 20-01. No attempt was made to verify
that found monument is monument as noted in P.M.
20-01

A description of the physical condition of the monument as found and as set or reset: Monument was
in good condition & left as found. (Monument box was
placed over monument box during 1999 Alpine Road
Resurfacing Project)

SURVEYOR'S STATEMENT

This Corner Record was prepared by me or under my direction in conformance with
the Land Surveyors' Act on 21 Oct, 1999.

Signed _____ R.C.E. Number 23341

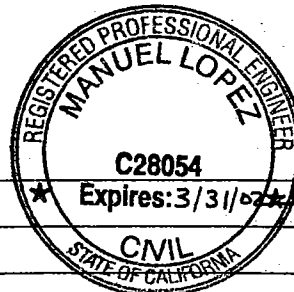
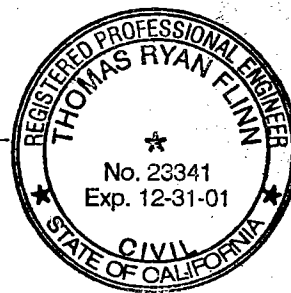
COUNTY SURVEYOR'S STATEMENT

This Corner Record was received NOVEMBER 5, 1999 and examined
and filed December 3, 1999.

Signed Manuel Lopez R.C.E. No. 21258

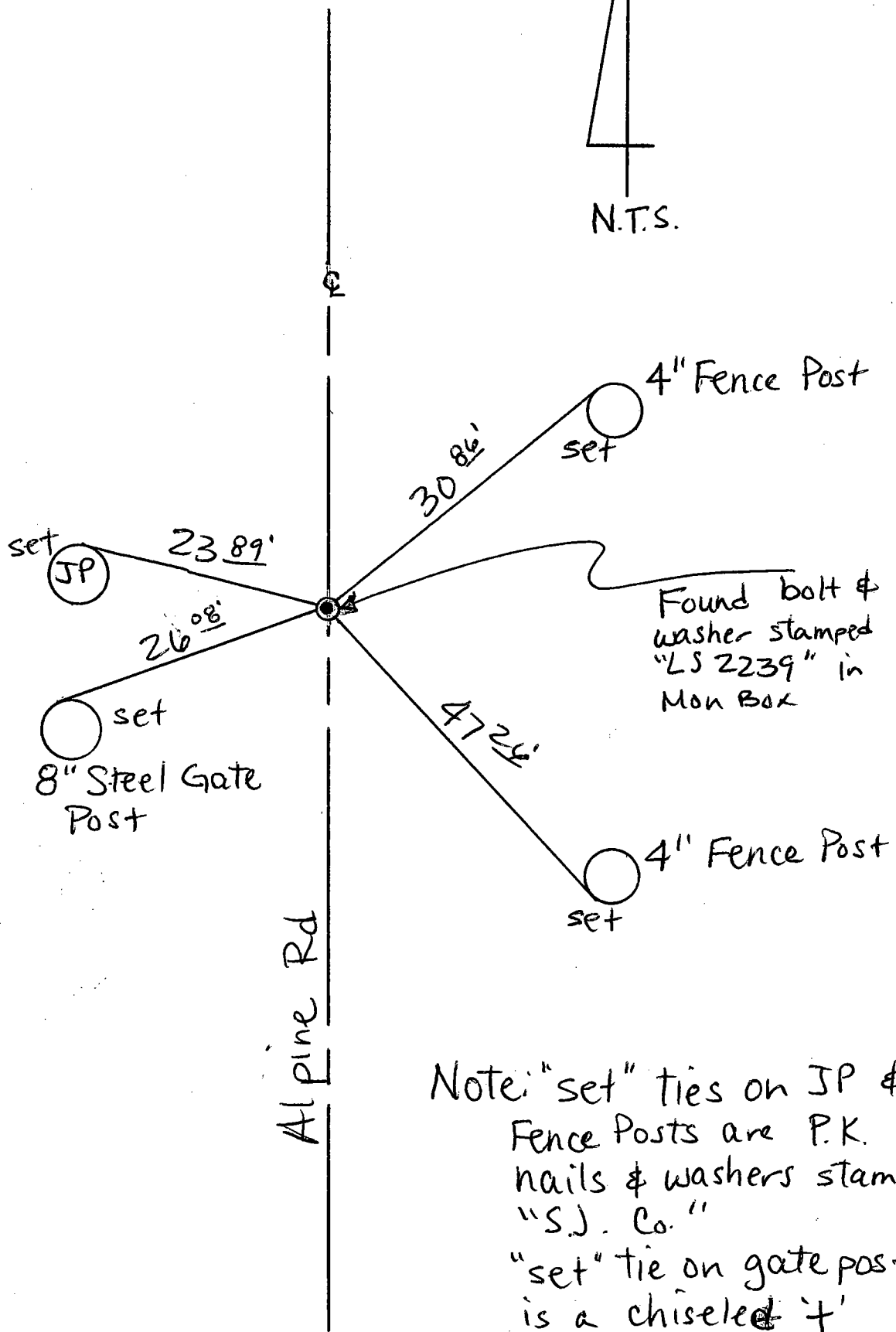
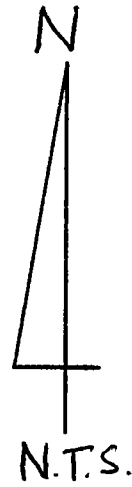
Title _____ County Surveyor

County Surveyor's Comment _____



(D.D. Sheet No. 16)

Jerry
Violet



Note: "set" ties on JP & Fence Posts are P.K. nails & washers stamped "S.J. Co."
"set" tie on gate post is a chiseled 't'