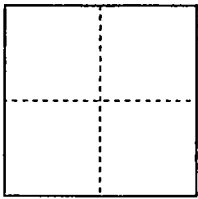


CORNER RECORD

City of TRACY

Document Number CR-99-23
County of San Joaquin, California

Brief Legal Description LOT 1, STERLING ESTATES, Unit No. 2
M. & P. 33-14



CORNER TYPE

Government Corner Control
Meander Property
Rancho Other
Date of Survey 10/22/99

COORDINATES (Optional)

N. _____
E. _____
Zone _____ NAD27 NAD83
NAD83 Epoch _____
Elev. _____
Vert. Datum: NGVD29 NAVD88
Meas. Units: Metric Imperial

Corner - Left as found Found and tagged Established Reestablished Rebuilt

Identification and type of corner found: Evidence used to identify or procedure used to establish or reestablish the corner:

see reverse

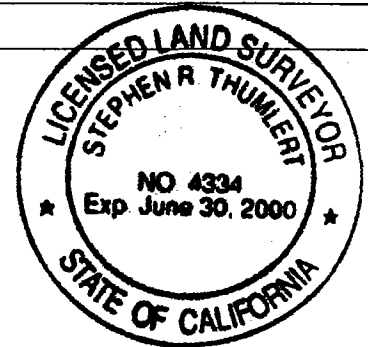
A description of the physical condition of the monument as found and as set or reset:

see reverse

SURVEYOR'S STATEMENT

This Corner Record was prepared by me or under my direction in conformance with the Land Surveyors' Act on OCTOBER 22, 19 99.

Signed Stephen R. Thumbert L.S. or R.C.E. Number 4334



COUNTY SURVEYOR'S STATEMENT

This Corner Record was received NOVEMBER 30, 1999 and examined and filed DECEMBER 1, 1999.

Signed Manuel Lopez R.C.E. No. 28054
Title Deputy County Surveyor



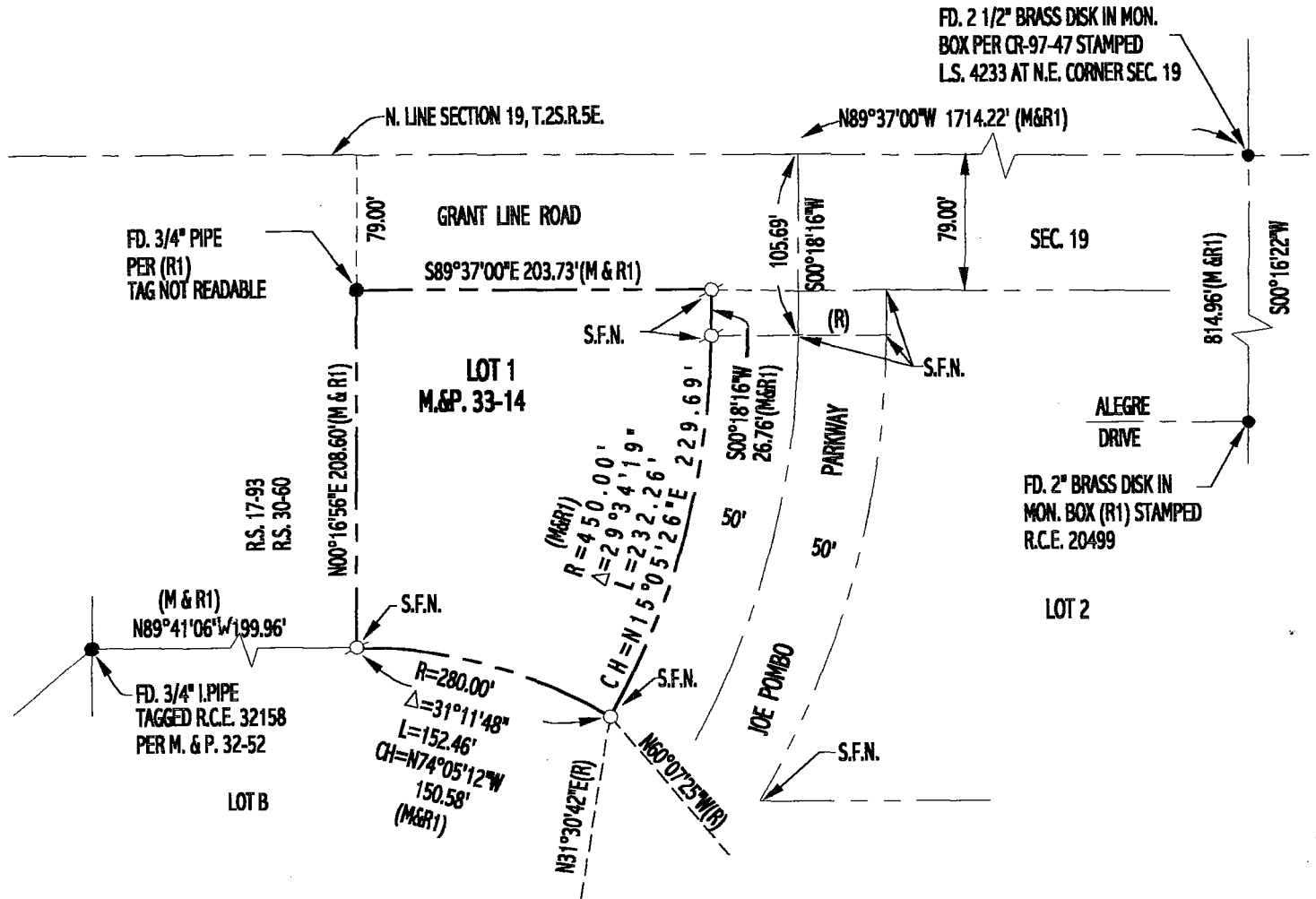
County Surveyor's Comment _____

(D.D. Sheet No. 530)

NOTE:

1) MONUMENTS WERE ALSO SEARCHED FOR ALONG THE ζ OF ORCHARD PARKWAY AND SOUTH LINE OF GRANT LINE ROAD SHOWN ON M. & P. 33-14 AND NONE WERE FOUND.

SCALE: 1" = 100'



- MONUMENT FOUND AS NOTED
- DENOTES SET 3/4" REBAR, 30" LONG/CAP STAMPED L.S. 4334
- DENOTES SET 1.17" BRASS DISK, STAMPED L.S. 4334 IN CONCRETE
- (R1) DENOTES RECORD DATA FROM M.&P. 33-14
- (R) DENOTES RADIAL BEARING