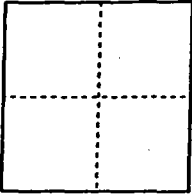


CORNER RECORD

Document Number CR-99-22
County of San Joaquin, California

City of _____

Brief Legal Description REESTABLISHED MISSING CORNERS OF PARCEL B, BOOK 6 OF PARCEL MAPS, PAGE 51 AND PARCEL A, BOOK 10 OF PARCEL MAPS, PAGE 52, S.J. CO. REC.



CORNER TYPE

Government Corner Control
Meander Property
Rancho Other
Date of Survey MAY 25, 1999

COORDINATES (Optional)

N. _____
E. _____
Zone _____ NAD27 NAD83
NAD83 Epoch _____
Elev. _____
Vert. Datum: NGVD29 NAVD88
Meas. Units: Metric Imperial

Corner - Left as found Found and tagged Established Reestablished Rebuilt

Identification and type of corner found: Evidence used to identify or procedure used to establish or reestablish the corner:
FOUND NORTHWEST AND NORTHEAST CORNERS OF SECTION 21, T. 3 S.,
R. 6 E., M.D.B. & M. AND SUFFICIENT RECORD CORNERS SHOWN ON BOOK
6 OF PARCEL MAPS, PAGE 51 AND BOOK 10 OF PARCEL MAPS, PAGE 52 TO
REESTABLISH THE MISSING CORNERS.

A description of the physical condition of the monument as found and as set or reset:
SET 3/4" DIAMETER X 30" LONG IRON PIN TAGGED R.C.E. 14269 AT THE
LOCATIONS NOTED ON THE CORNER RECORD.

SURVEYOR'S STATEMENT

This Corner Record was prepared by me or under my direction in conformance with
the Land Surveyors' Act on JULY 23, 1999.

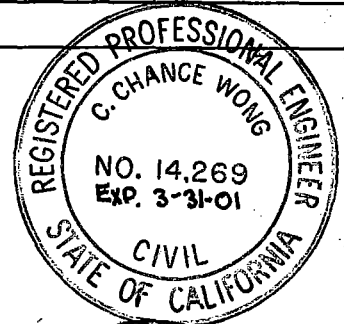
Signed C. Chance Wong R.C.E. Number 14269

COUNTY SURVEYOR'S STATEMENT

This Corner Record was received November 4, 1999 and examined
and filed November 15, 1999.

Signed Henry M. Hirata R.C.E. No. 21258
Title County Surveyor

County Surveyor's Comment _____



(D.D. Sheet No. 67)

FD. SPIKE
& SHINER AT
SECTION CORNER
PER PM 6-51

FD PK NAIL & SHINER
N0°01'32"E, 0.60'(B)(M)

FD. 2"x2" HUB
& TACK AT
SECTION
CORNER
PER PM 6-51
& R.S. 32-98

SET 3/4" I. PIN
TAGGED R.C.E. 14269
AT 1/4 CORNER

SEC.
17

SEC. 16

S89°55'E 5265.98'
(5265.79' (A))(5266.09' (B))

SEC.
16

SEC.
15

2632.99'

695.77'(M)

(846.75'(B))

SFN

S89°55'E 1786.26' (1786.31')(A)

846.73' (846.49'(A))

SEC.
20

SEC.
21

T. 3 S., R. 6 E.,
M.D.B. & M.,
SAN JOAQUIN
COUNTY,
CALIFORNIA

DURHAM FERRY ROAD

SEC.
21

SEC.
22

T. 3 S., R. 6 E.,
M.D.B. & M.,
SAN JOAQUIN
COUNTY,
CALIFORNIA

25' N.T.S.

FD 3/4" IRON PIPE
TAGGED LS 3580
N0°01'32"E, 0.61'(B)(M)
PER (B)

P.M. 10-52

INST. NO. 88102733

1/4 SEC. LINE

2170.71'(M)(A)

SFN
SET 3/4" IRON PIN
TAGGED R.C.E. 14269

R.S. 32-98
(REF. B)

P.M. 6-51
(REF. A)

5261.89'(A)

SFN
SET 3/4" IRON PIN
TAGGED R.C.E. 14269

R.S. 32-98
(REF. B)

STATE HIGHWAY
UNION PACIFIC RAILROAD
ROUTE NO. 33

SCALE 1"=600'



LEGEND:

- (M) MEASURED
- FD. MONUMENT
- SET MON.
- S.F.N. SEARCHED FD. NOTHING
- N.T.S. NOT TO SCALE

FD 3/4" IRON
PIPE TAGGED
R.C.E. 9924 PER
P.M. 6-51

CORNER RECORD



WONG ENGINEERS, INC.
PLANNING ENGINEERING SURVEYING
STOCKTON, CA
MAY 1999

FD. SPIKE
& SHINER AT
SECTION CORNER
PER PM 6-51

SCALE: 1"=600'

FD. 2"x2" HUB &
TACK AT
SECTION
CORNER
PER PM 6-51
& R.S. 32-98

FD PK NAIL & SHINER
N0°01'32"E, 0.60'(B)(M)

SET 3/4" I. PIN
TAGGED R.C.E. 14269
AT 1/4 CORNER

DURHAM FERRY ROAD
S89°55'E 5265.98'
(5265.79' (A))(5266.09' (B))

SEC. 17

SEC. 16

SEC. 16

SEC. 15



SEC. 20
SEC. 21
T. 3 S., R. 6 E.,
M.D.B. & M.,
SAN JOAQUIN
COUNTY,
CALIFORNIA

SEC. 21
SEC. 22
T. 3 S., R. 6 E.,
M.D.B. & M.,
SAN JOAQUIN
COUNTY,
CALIFORNIA

SEE DETAIL
P.M. 10-52
(REF. C)

INST. NO. 88102733

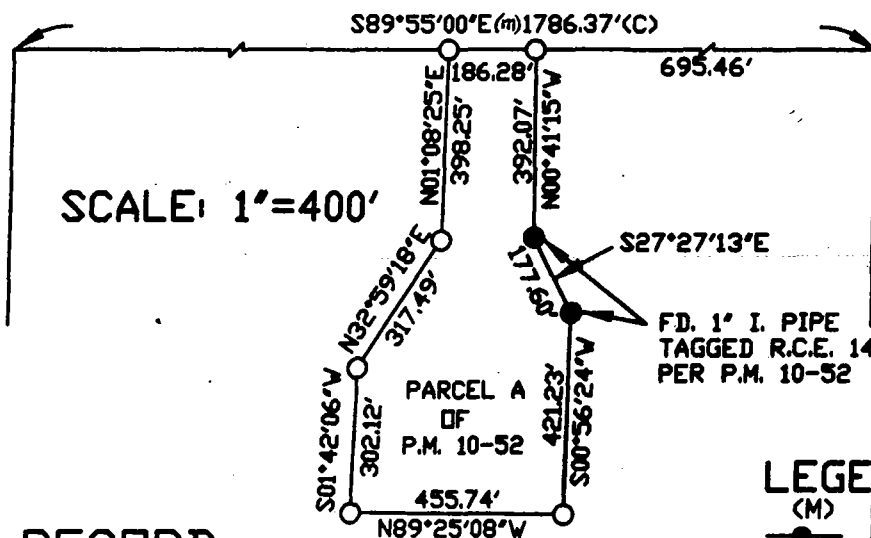
FD 3/4" IRON PIPE
TAGGED LS 3580
N0°01'32"E, 0.61'(B)(M)
PER (B)

R.S. 32-98
(REF. B)

SFN
SET 3/4" IRON PIN
TAGGED R.C.E. 14269

P.M. 6-51
(REF. A)

DETAIL



SCALE: 1"=400'

FD. 1" I. PIPE
TAGGED R.C.E. 14901
PER P.M. 10-52

PARCEL A
OF
P.M. 10-52

LEGEND:

- (M) MEASURED
- FD. MONUMENT
- SET MON.
- S.F.N. SEARCHED FD.
- NOTHING
- N.T.S. NOT TO SCALE

CORNER RECORD



WONG ENGINEERS, INC.
PLANNING ENGINEERING SURVEYING
STOCKTON, CA
MAY 1999