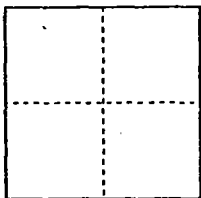


CORNER RECORD

Document Number CR-99-18  
County of San Joaquin, California

City of \_\_\_\_\_

Brief Legal Description IN SE 1/4 OF SECTION 36, T.5 N., R.8 E., M.D.M.,  
AS SHOWN ON RECORD OF SURVEY BOOK 29, PAGE 74, SJCR.



CORNER TYPE

- Government Corner  Control
- Meander  Property
- Rancho  Other

Date of Survey 8/6/99

COORDINATES (Optional)

N. \_\_\_\_\_  
 E. \_\_\_\_\_  
 Zone \_\_\_\_\_ NAD27  NAD83   
 NAD83 Epoch \_\_\_\_\_  
 Elev. \_\_\_\_\_  
 Vert. Datum: NGVD29  NAVD88   
 Meas. Units: Metric  Imperial

Corner - Left as found  Found and tagged  Established  Reestablished  Rebuilt

Identification and type of corner found: Evidence used to identify or procedure used to establish or reestablish the corner:

FOUND RECORD MONUMENTS PER RECORD OF SURVEY BOOK 29  
PAGE 74, SAN JOAQUIN COUNTY RECORDS. ORIGINAL  
MONUMENTS WERE USED AS BASIS OF BEARINGS TO RESET  
DAMAGED AND MISSING CORNERS AS SHOWN ON PAGE 2  
OF 2 OF THIS CORNER RECORD.

A description of the physical condition of the monument as found and as set or reset: RECORD MONUMENTS  
WERE FOUND IN GOOD CONDITION. RESET CORNERS AS NOTED  
CORNER No. 1 - SET 1" IP OVER FOUND BENT MONUMENT AFTER  
STRAIGHTENED; CORNER No. 2 - SET 1" IP AT LOCATION -  
NO EVIDENCE OF RECORD CORNER WAS FOUND.

SURVEYOR'S STATEMENT

This Corner Record was prepared by me or under my direction in conformance with  
the Land Surveyors' Act on AUGUST 6, 19 99.

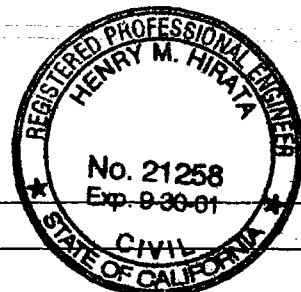
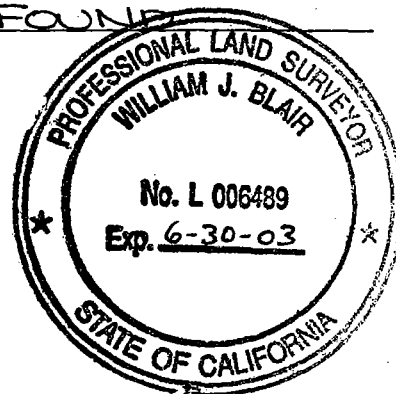
Signed William J. Blair L.S. or R.C.E. Number 6489

COUNTY SURVEYOR'S STATEMENT

This Corner Record was received September 28, 1999 and examined  
and filed October 6, 1999.

Signed Henry M. Hirata R.C.E. No. 21258  
Title \_\_\_\_\_ County Surveyor

County Surveyor's Comment \_\_\_\_\_



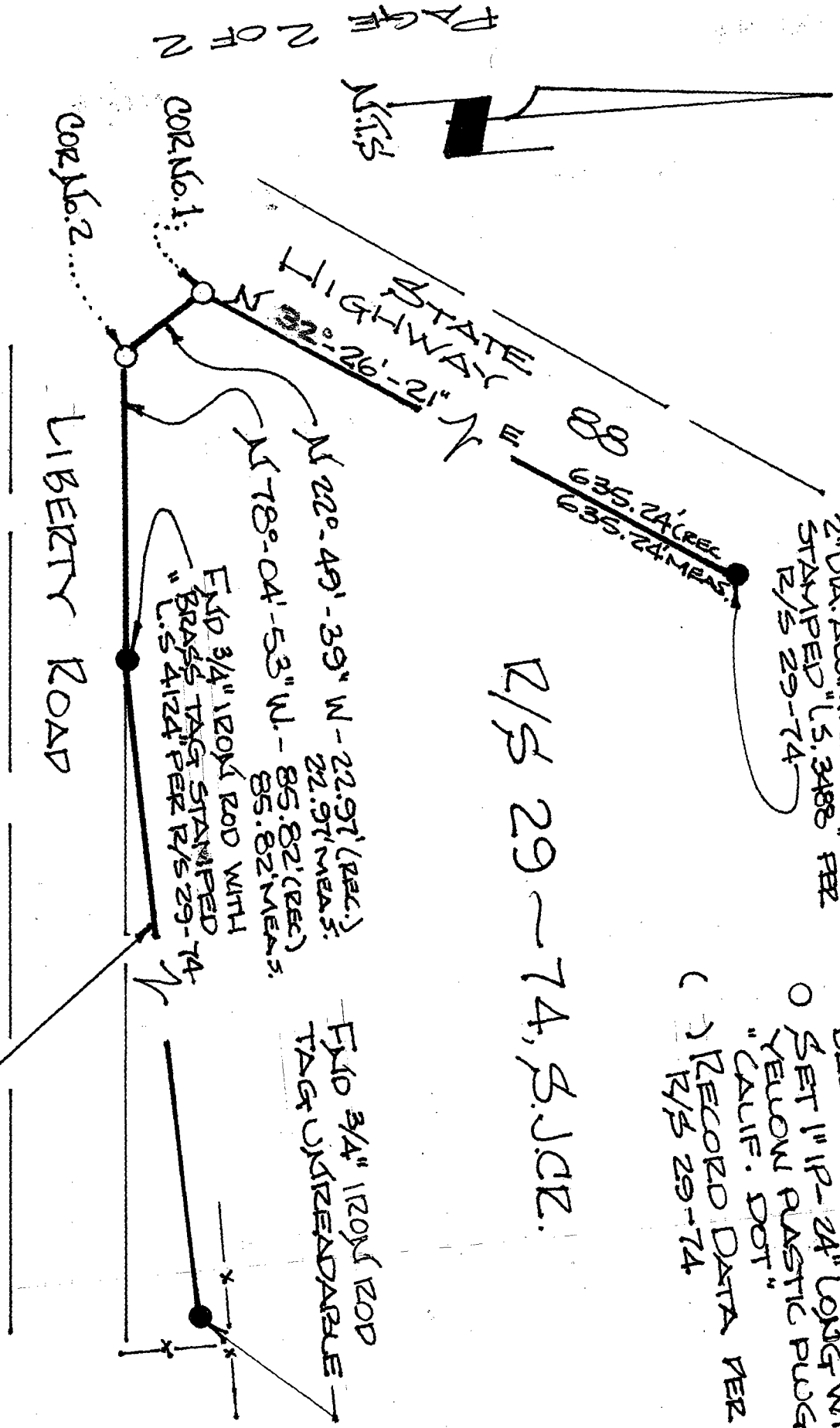
(D.D. Sheet No. 5)

SECTION 36, T.S.N., R.B.F., M.D.M

- LEGEND
- FOUND MONUMENT DESCRIBED AS SHOWN
  - SET 1" IP-24" LONG WITH YELLOW PLASTIC PLUG "CALIF. DOT"
  - ( ) RECORD DATA PER R/S 29-74

R/S 29-74, S.J.CZ.

END 3/4" REBAR WITH 2" DIA. ALUM. CAP STAMPED "S. 3488" PER R/S 29-74



NOTE:  
THE BASIS OF BEARINGS IS IDENTICAL TO THAT OF R/S 29-74 OF SAN JOAQUIN COUNTY RECORDS.

BASIS OF BEARINGS  
(S 88°-59'-01" W - 1083.06) (REC.)  
(S 88°-59'-01" W - 1082.92) (MEAS)