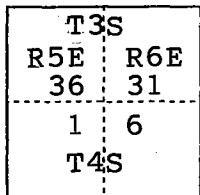


CORNER RECORD

Document Number CR-99-11
County of San Joaquin, California

City of _____

Brief Legal Description TOWNSHIP CORNER - NORTHWEST CORNER SECTION 6, TOWNSHIP 4
SOUTH, RANGE 6 EAST, M.D.M.



CORNER TYPE

Government Corner Control
Meander Property
Rancho Other

Date of Survey Nov. 4, 1997

COORDINATES (Optional)

N. _____
E. _____
Zone _____ NAD27 NAD83
NAD83 Epoch _____
Elev. _____
Vert. Datum: NGVD29 NAVD88
Meas. Units: Metric Imperial

Corner - Left as found Found and tagged Established Reestablished Rebuilt

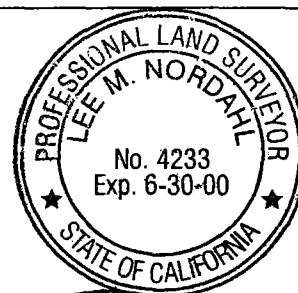
Identification and type of corner found: Evidence used to identify or procedure used to establish or reestablish the corner:
Found tack on 1"x 2" stake, 2" below paved road surface at the centerline
intersection of Bird Road and Blewett Road. Shown to be Section Corner on
the "Bird Road Improvement Plans", prepared by Sierra Engineering Services,
dated October 1997. Verified position by swing ties as per County Field
Book No. 49-T, Page 9.

A description of the physical condition of the monument as found and as set or reset: Left as found.

SURVEYOR'S STATEMENT

This Corner Record was prepared by me or under my direction in conformance with
the Land Surveyors' Act on July 2, 1999.

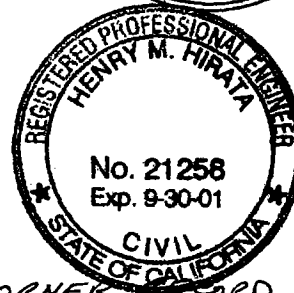
Signed [Signature] L.S. ~~Number~~ Number 4233



COUNTY SURVEYOR'S STATEMENT

This Corner Record was received JULY 28, 1999 and examined
and filed AUGUST 2, 1999.

Signed Henry M. Hirata R.C.E. No. 21258
Title County Surveyor



County Surveyor's Comment INITIAL SUBMITTAL OF THIS CORNER RECORD
(5-7-99) EXCEEDED THE MAXIMUM 90-DAY TIME LIMIT PER
BOARD RULE 464(C).

(D.D. Sheet Nos. 67, 68, 76)

FD. R/R SPIKE FOR SECTION CORNER. PER R.S. 16-14

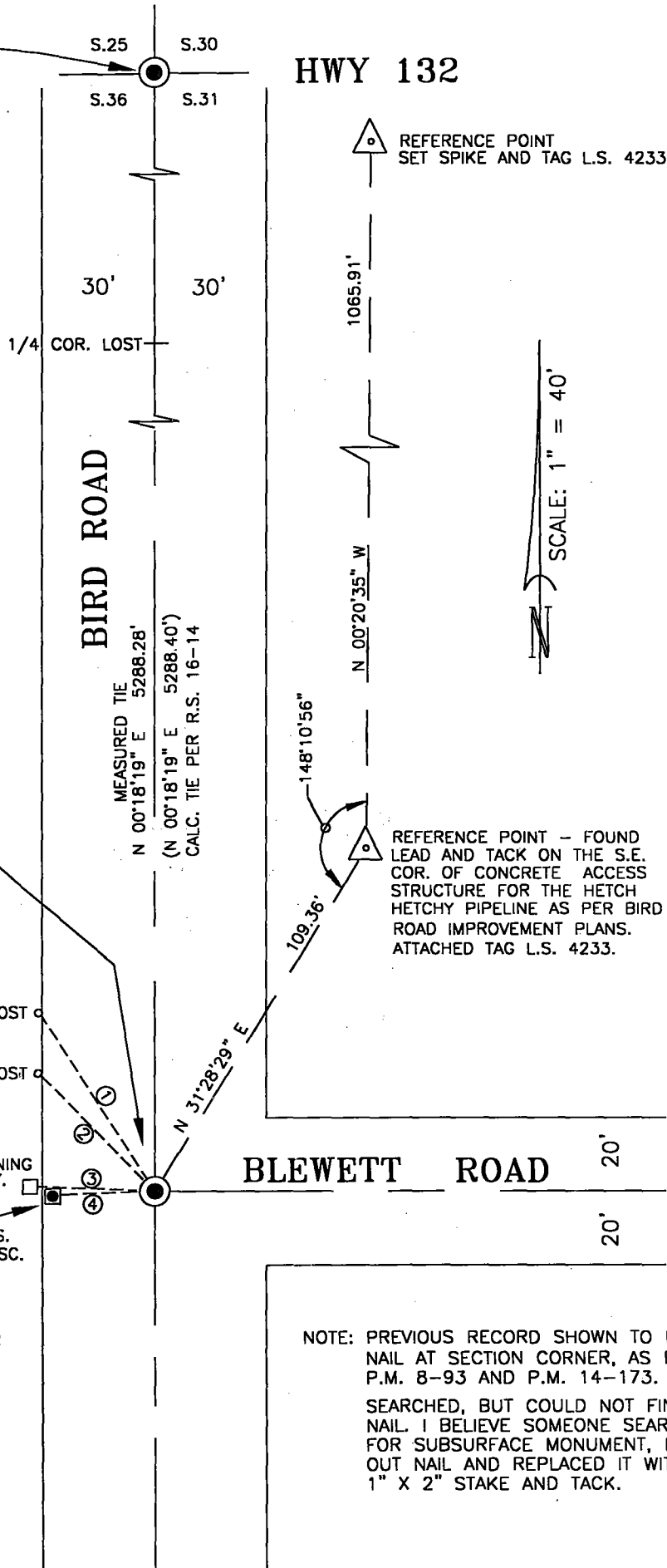
HWY 132

REFERENCE POINT SET SPIKE AND TAG L.S. 4233.

TOWNSHIP CORNER

T3S	
R5E	R6E
S 36	S 31
S 1	S 6
T4S	

FOUND TACK IN 1" X 2" STAKE, 2" BELOW PAVED ROAD SURFACE AT THE CENTERLINE INTERSECTION OF BIRD ROAD AND BLEWETT ROAD. SHOWN TO BE SECTION/TOWNSHIP CORNER ON THE "BIRD ROAD IMPROVEMENT PLANS", PREPARED BY SIERRA ENGINEERING SERVICES, DATED OCTOBER 1997.



MEASURED TIE
 N 00°18'19" E 5288.28'
 (N 00°18'19" E 5288.40')
 CALC. TIE PER R.S. 16-14

REFERENCE POINT - FOUND LEAD AND TACK ON THE S.E. COR. OF CONCRETE ACCESS STRUCTURE FOR THE HETCH HETCHY PIPELINE AS PER BIRD ROAD IMPROVEMENT PLANS. ATTACHED TAG L.S. 4233.

STEEL FENCE POST
 STEEL FENCE POST
 FD. CONC MON LEANING OVER WESTERLY.
 FD. 6"X6" CONCRETE MONUMENT WITH U.S.G.S. BENCH MARK BRASS DISC.

DATA TABLE

MEAS SWING TIE	COUNTY SWING TIE AS PER FIELD BOOK 49-T, PG 9 9-16-53.
① 56.27'	56.30'
② 43.23'	43.20'
③ 31.06'	30.50'
④ 27.16' S 88°07'29" W	27.18'

NOTE: PREVIOUS RECORD SHOWN TO BE A NAIL AT SECTION CORNER, AS PER P.M. 8-93 AND P.M. 14-173. SEARCHED, BUT COULD NOT FIND NAIL. I BELIEVE SOMEONE SEARCHING FOR SUBSURFACE MONUMENT, DUG OUT NAIL AND REPLACED IT WITH 1" X 2" STAKE AND TACK.