

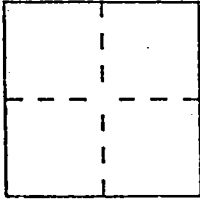
CORNER RECORD

Document Number CL-99-09

City of _____

County of SAN JOAQUIN, California

Brief Legal Description LOT 60 OF AMENDED GRANADA GLEN OF LINDEN (MIP)



CORNER TYPE

COORDINATES
(Optional)

Government Corner Control
 Meander Property
 Rancho Other
 Date of Survey 10-28-98

N. _____
 E. _____
 Zone _____ Datum _____
 Elev. _____

Corner — Left as found Found and tagged Established Reestablished Rebuilt
 REMOVED

Identification and type of corner found: Evidence used to identify or procedure used to establish or reestablish the corner: PREVIOUSLY SET MONUMENT PER CORNER RECORD 99-08 WAS REMOVED.

A description of the physical condition of the monument as found and as set or reset: MONUMENT REMOVED WAS 3/4" IRON ROD CAPPED LS 7269

SURVEYOR'S STATEMENT

This Corner Record was prepared by me or under my direction in conformance with the Land Surveyors' Act on DECEMBER 17, 19 98.

Signed Joe Murphy L.S. ~~7269~~ Number LS 7269



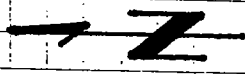
COUNTY SURVEYOR'S STATEMENT

This Corner Record was received APRIL 8, 19 99 and examined and filed APRIL 14, 19 99.

Signed Henry M. Hirata Title COUNTY SURVEYOR

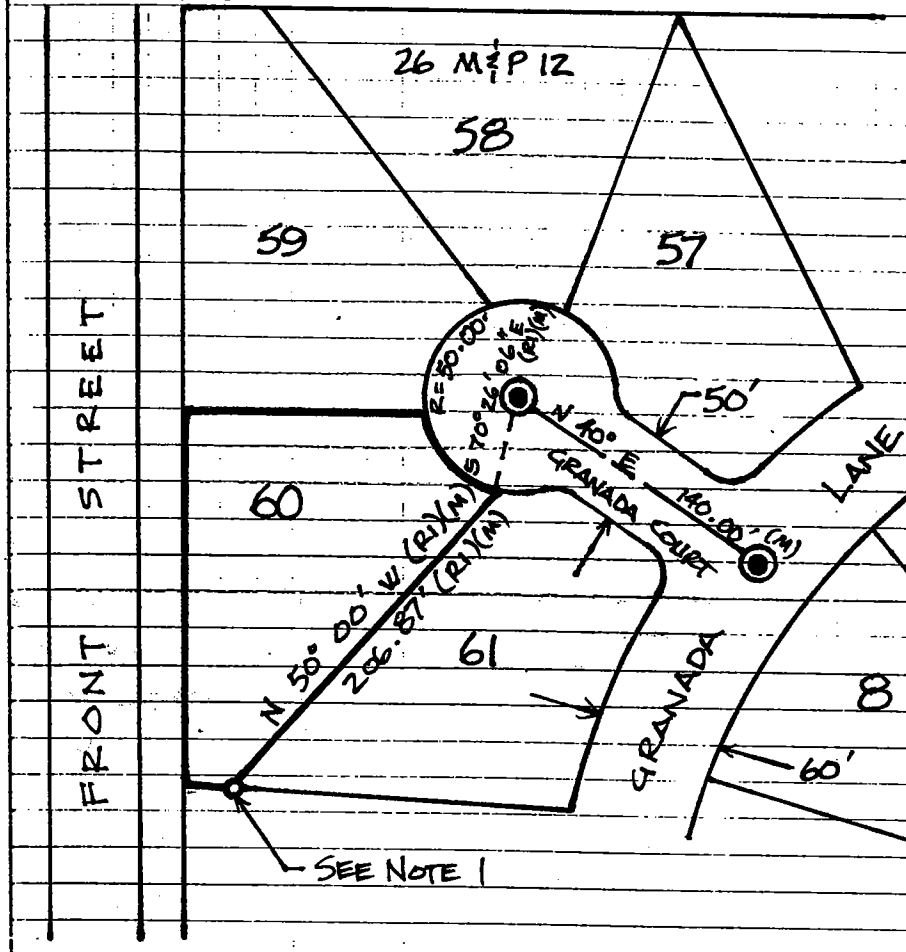


County Surveyor's Comment _____



SCALE = 1" = 100'

19 R.S. 199



MONUMENTS FOUND:

IRON RODS, 3/4" IN DIAMETER, ENCLOSED IN MONUMENT BOXES WITH BRASS TAG ATTACHED AND STAMPED "R.C.E. 8189"

SHOWN THUS:

LEGEND:

- (M) MEASURED
- (R) 26 M&P 12
- FOUND MONUMENT AS NOTED
- SET MONUMENT AS NOTED

1 - CLIENT CHANGED HIS MIND. DID NOT WANT TO COMPLETE SURVEY. MONUMENT REMOVED 10/28/98.