

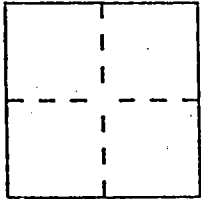
CORNER RECORD

Document Number CR-99-08

City of _____

County of SAN JOAQUIN, California

Brief Legal Description LOT 60 OF AMENDED GRANADA GLEN OF LINDEN (M&P 26-12)



CORNER TYPE

Government Corner Control
Meander Property
Rancho Other
Date of Survey 10/21/98

COORDINATES
(Optional)

N. _____
E. _____
Zone _____ Datum _____
Elev. _____

Corner — Left as found Found and tagged Established Reestablished Rebuilt

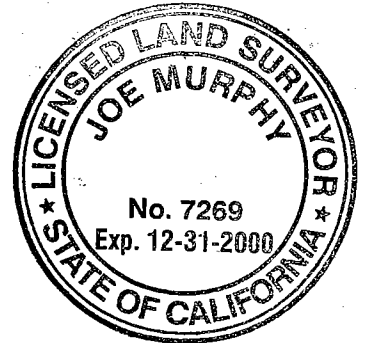
Identification and type of corner found: Evidence used to identify or procedure used to establish or reestablish the corner: CENTERLINE MONUMENTS WERE USED AND BOUNDARY INFORMATION FROM THE RECORD MAP WAS USED TO RESET A LOT CORNER.

A description of the physical condition of the monument as found and as set or reset: SET 3/4" x 30" IRON ROD CAPPED LS 7269.

SURVEYOR'S STATEMENT

This Corner Record was prepared by me or under my direction in conformance with the Land Surveyors' Act on DECEMBER 17, 19 98.

Signed Joe Murphy L.S. ~~7269~~ Number LS 7269



COUNTY SURVEYOR'S STATEMENT

This Corner Record was received APRIL 8, 19 99 and examined and filed APRIL 13, 19 99.

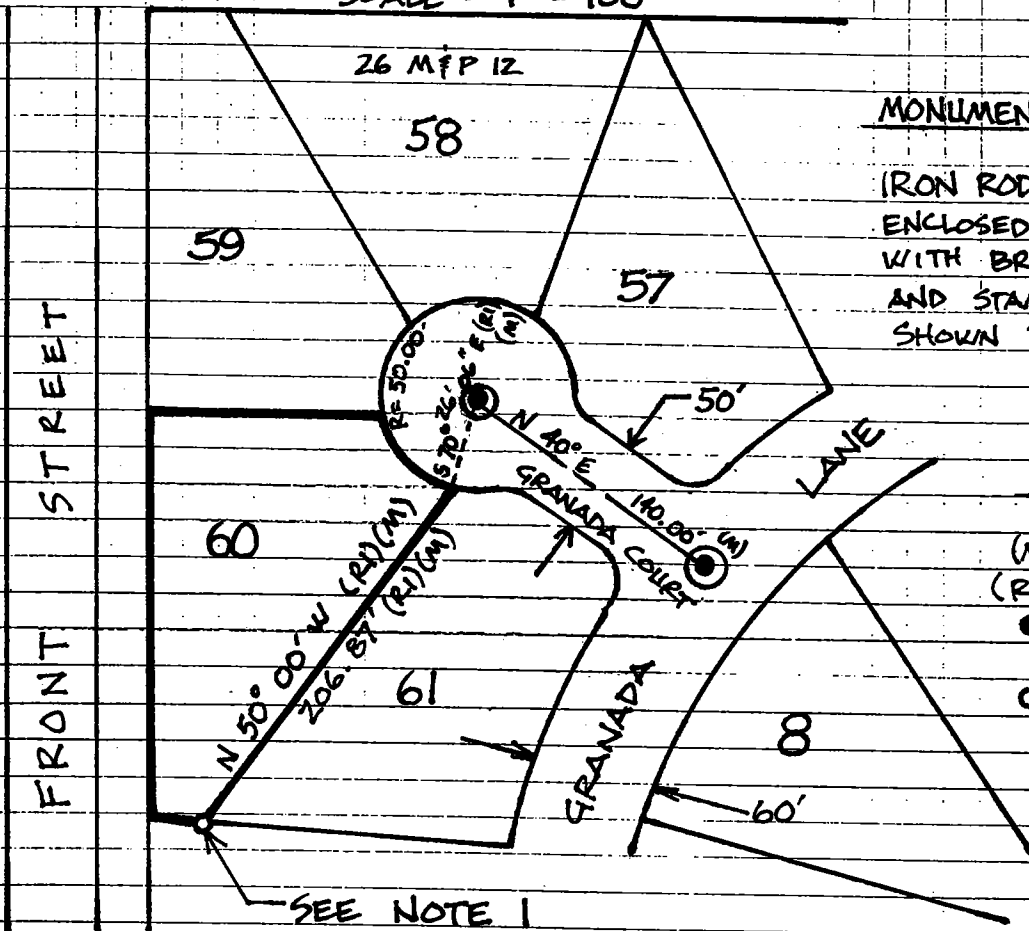
Signed Henry M. Hirata Title COUNTY SURVEYOR



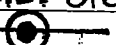
County Surveyor's Comment _____

19 R.S. 199

SCALE = 1" = 100'



MONUMENTS FOUND:

IRON ROD, 3/4" IN DIAMETER, ENCLOSED IN MONUMENT BOXES WITH BRASS TAG ATTACHED AND STAMPED "R.C.E. 8189" SHOWN THUS: 

LEGEND

- (M) MEASURED
- (R1) 26 M&P 12
- FOUND MONUMENT AS NOTED
- SET MONUMENT AS NOTED

1 - SET 3/4" x 30" LONG IRON ROD CAPPED L.S. 7269, SURVEY NOT COMPLETED AND MONUMENT WAS NOT SUBSTANTIATED.
MONUMENT SET 10/21/98.