

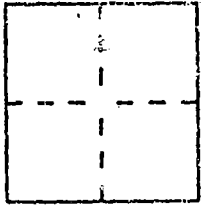
CORNER RECORD

Document Num CR-99-7

City of RIPON

County of SAN JOAQUIN, California

Brief Legal Description LOTS 15 & 16, BLOCK 3 OF "NORTH RIPON" FILED IN BOOK OF OFFICIAL MAPS AND PLATS, VOLUME 4, PAGE 49, SAN JOAQUIN COUNTY RECORDS



CORNER TYPE

COORDINATES (Optional)

Government Corner  Control   
Meander  Property   
Rancho  Other   
Date of Survey 12-5-98

N. \_\_\_\_\_  
E. \_\_\_\_\_  
Zone \_\_\_\_\_ Datum \_\_\_\_\_  
Elev. \_\_\_\_\_

Corner -- Left as found  Found and tagged  Established  Reestablished  Rebuilt

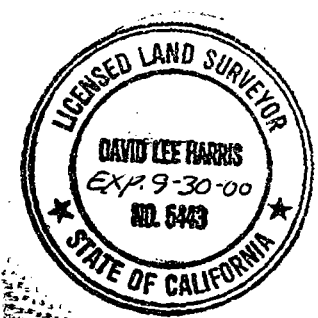
Identification and type of corner found: Evidence used to identify or procedure used to establish or reestablish the corner: FOUND EXISTING MONUMENTS FROM RECORD MAPS WERE USED TO RE ESTABLISH BLOCK No.3 OF SAID MAP.  
Corners were reset by proration.

A description of the physical condition of the monument as found and as set or reset: SET 3/4" IRON PIPES, 30" LONG. ATTACHED TAG L.S. 5443 TO EACH SET PIPE.

SURVEYOR'S STATEMENT

This Corner Record was prepared by me or under my direction in conformance with the Land Surveyors' Act on DECEMBER 6, 1998.

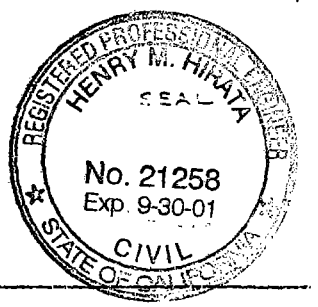
Signed David L. Harris L.S. or ~~REG.~~ Number L.S. 5443



COUNTY SURVEYOR'S STATEMENT

This Corner Record was received FEBRUARY 25, 1999 and examined and filed MARCH 8, 1999.

Signed Henry M. Hirata Title COUNTY SURVEYOR

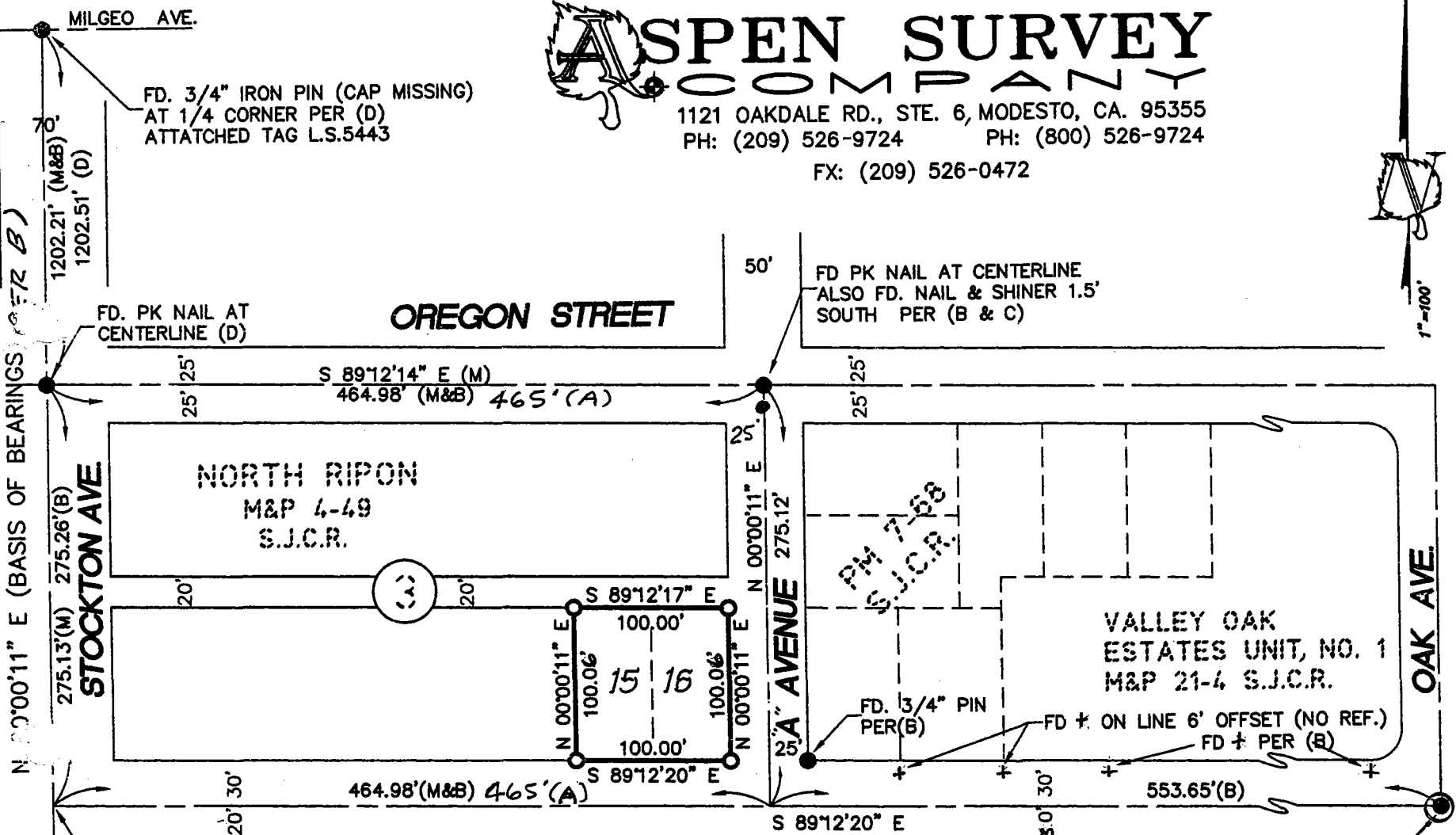


County Surveyor's Comment \_\_\_\_\_

\_\_\_\_\_  
\_\_\_\_\_  
\_\_\_\_\_

# ASPEN SURVEY COMPANY

1212 OAKDALE RD., STE. 6, MODESTO, CA. 95355  
 PH: (209) 526-9724 PH: (800) 526-9724  
 FX: (209) 526-0472



PAGE 2 OF 2

## CORNER RECORD PLAT

BEING A REMONUMENTATION OF LOTS 15 & 16 OF BLOCK 3 ACCORDING TO THE MAP ENTITLED NORTH RIPON FILED FOR RECORD IN VOLUME 4 OF MAPS AND PLATS, PAGE 49, SAN JOAQUIN COUNTY RECORDS. SEC.20, T.2S.,R8E.,M.D.M., CITY OF RIPON COUNTY OF SAN JOAQUIN CALIFORNIA

- (A) NORTH RIPON 4 M&P 49
- (B) PARCEL MAP 7 PM 68
- (C) MAP OF SURVEY 24 RS 175
- (D) RECORD OF SURVEY 31 - 88
- (E) M & P 21 - 4
- (M) MEASURED, THIS SURVEY ALL RECORD INFORMATION SAN JOAQUIN COUNTY RECORDS

PAGE 2 OF 2

SEC. 19 SEC. 20  
 MAIN STREET

FD. 1" IRON PIPE AT SECTION CORNER (B&C) USED FOR LINE ONLY  
 (IN MON. WELL, NOT TAGGED)