

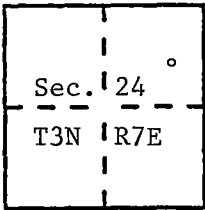
# CORNER RECORD

Document Number CR-99-5

City of \_\_\_\_\_

County of San Joaquin, California

Brief Legal Description The southwesterly corner of the southerly 5.325 acre (gross) parcel as shown on that Record of Survey filed for record in Book 17 of Surveys, at Page 44, San Joaquin County Records.



### CORNER TYPE

Government Corner  Control   
 Meander  Property   
 Rancho  Other   
 Date of Survey 11-04-93

### COORDINATES (Optional)

N. \_\_\_\_\_  
 E. \_\_\_\_\_  
 Zone \_\_\_\_\_ Datum \_\_\_\_\_  
 Elev. \_\_\_\_\_

Corner — Left as found  Found and tagged  Established  Reestablished  Rebuilt

Identification and type of corner found: Evidence used to identify or procedure used to establish or reestablish the corner: Found monuments as indicated on R.S. 17-44 along Jack Tone Rd. Searched for rear monuments, found nothing. Set southwesterly corner using record bearing and distance from found monument at intersection of the southerly parcel line and the westerly right-of-way of Jack Tone Road.

A description of the physical condition of the monument as found and as set or reset: Set 3/4" x 30" long iron pin with plastic cap stamped "R.C.E. 15831"

### SURVEYOR'S STATEMENT

This Corner Record was prepared by me or under my direction in conformance with the Land Surveyors' Act on January 4, 1999.

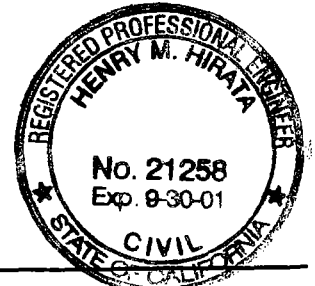
Signed Albert R. Sanguinetti R.C.E. Number 15,831



### COUNTY SURVEYOR'S STATEMENT

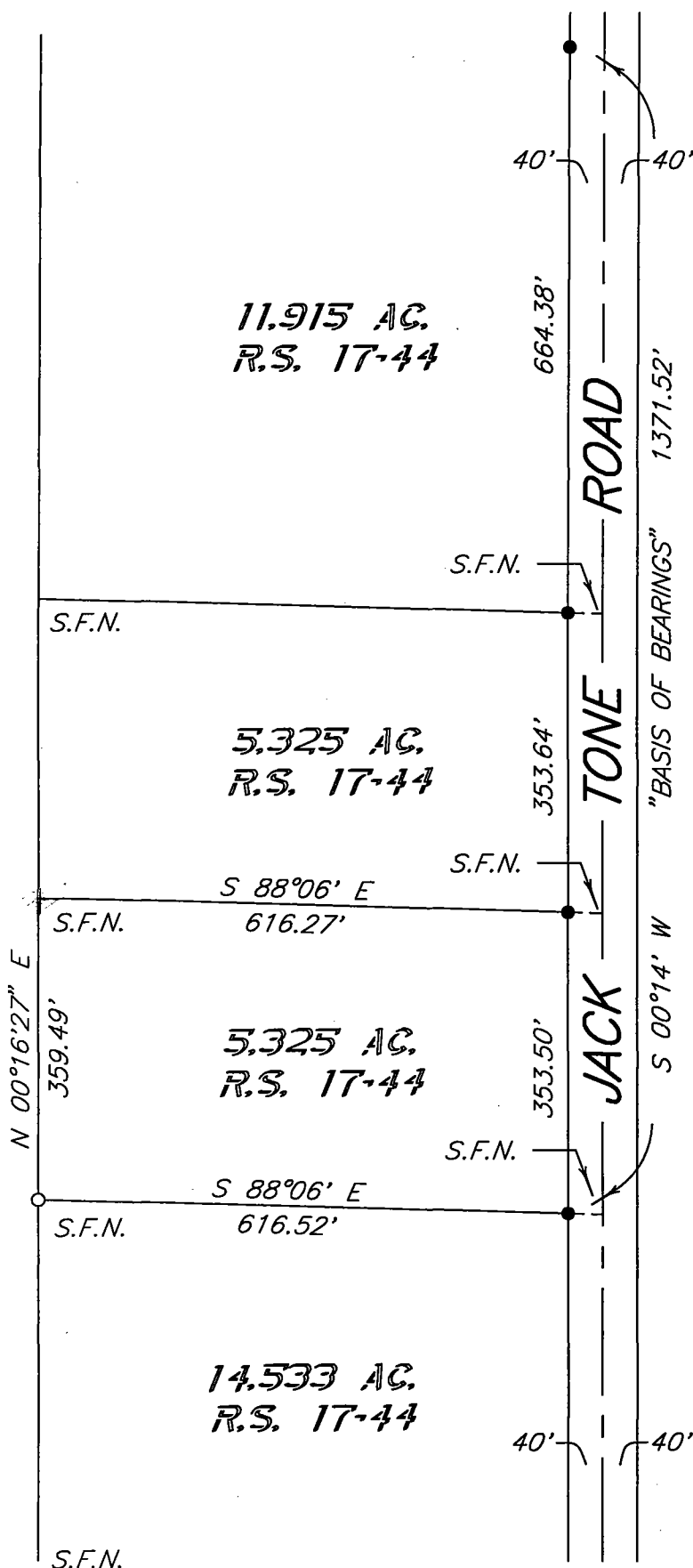
This Corner Record was received FEBRUARY 2, 1999 and examined and filed FEBRUARY 8<sup>th</sup>, 1999.

Signed Henry M. Hirata Title County Surveyor



### County Surveyor's Comment

Initial submittal of this corner record exceeded the maximum 90-day time limit per Board Rule 464(c).



### LEGEND

- FOUND 3/4" IRON PIPE TAGGED "R.C.E 15831" PER R.S. 17-44
- SET 3/4" X 30" LONG IRON PIN WITH CAP STAMPED "R.C.E. 15831"
- S.J.C.R. SAN JOAQUIN COUNTY RECORDS
- R.S. RECORD OF SURVEY, BOOK & PAGE, S.J.C.R.
- S.F.N. SEARCHED, FOUND NOTHING

### BASIS OF BEARINGS

THE BASIS OF BEARINGS FOR THIS SURVEY IS THE WESTERLY LINE OF 80-FOOT WIDE JACK TONE ROAD AS CALCULATED FROM R.S. 17-44 AS SOUTH 00°14' WEST.

