

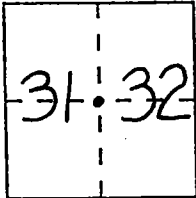
CORNER RECORD

Document Number CL-98-18

City of _____

County of San Joaquin, California

Brief Legal Description E. 1/4 Cor. Sec. 31, T.2S., R.5E., M.D.B. & M.



CORNER TYPE

Government Corner ☒ Control ☐
 Meander ☐ Property ☐
 Rancho ☐ Other ☐
 Date of Survey 7-9-98

COORDINATES (Optional)

N. _____
 E. _____
 Zone _____ Datum _____
 Elev. _____

T.2S., R.5E., M.D.B. & M.

Corner — Left as found ☒ Found and tagged ☐ Established ☐ Reestablished ☐ Rebuilt ☐

Identification and type of corner found: Evidence used to identify or procedure used to establish or reestablish the corner: Fd. Small Spike & Washer 30' West Of 2" I.P. (PM 20-52) Which Is The Above Described 1/4 Cor. 17.71' South Of Brass Mon. In Mon. Box (Stamped RE 9338) Set Per F.B. 673, Pg. 38 & Incorrectly Described As The 1/4 Corner In Question.

A description of the physical condition of the monument as found and as set or reset: The Monument Was In Good Condition & Was Left As Found. Set 3 reference points

SURVEYOR'S STATEMENT

This Corner Record was prepared by me or under my direction in conformance with the Land Surveyors' Act on JULY 22, 1998.

Signed [Signature] L.S. or R.C.E. Number 23341



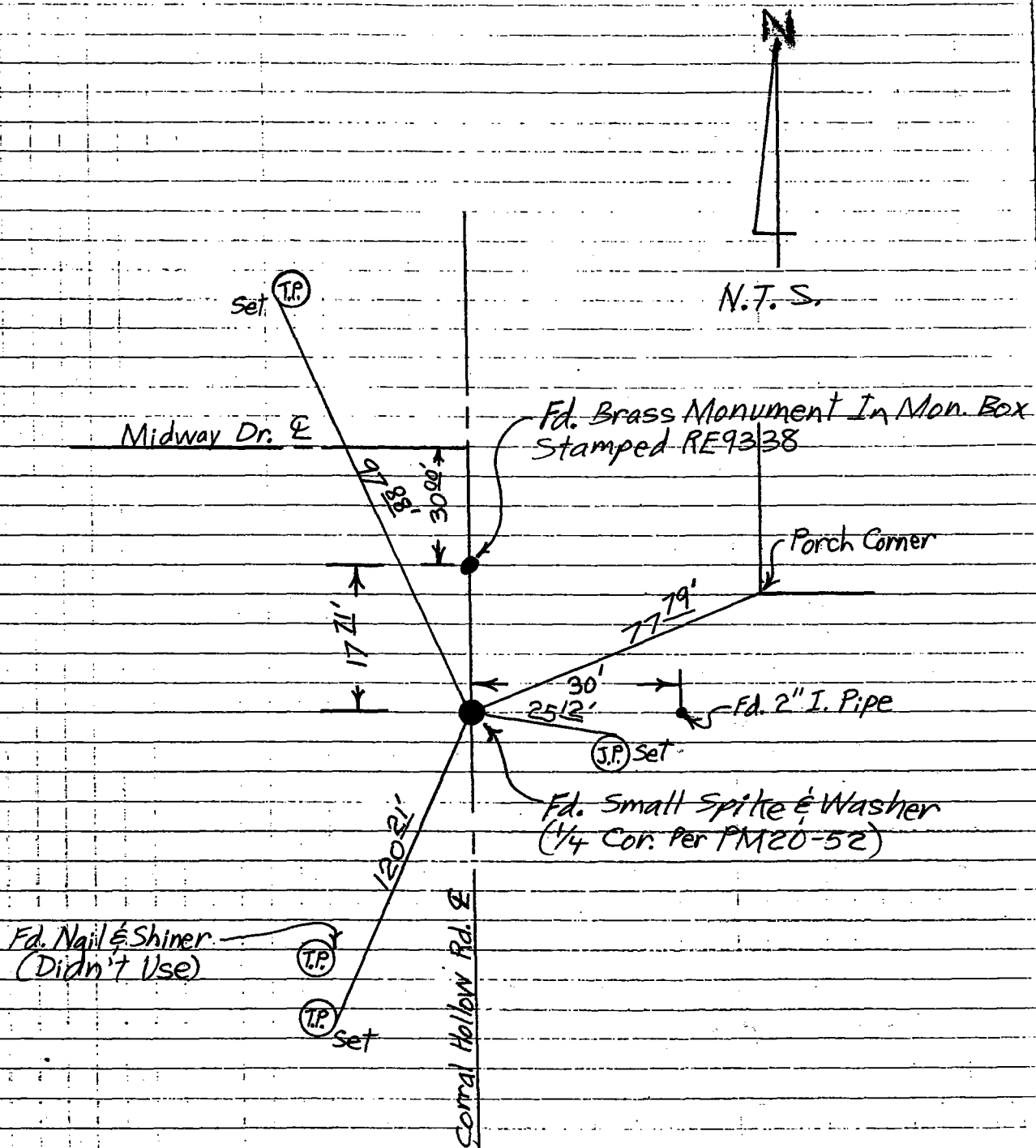
COUNTY SURVEYOR'S STATEMENT

This Corner Record was received AUGUST 14, 1998 and examined and filed SEPTEMBER 8, 1998.

Signed Henry M. Thrata Title COUNTY SURVEYOR



County Surveyor's Comment _____



Set Monuments Are Concrete Nails & Washers Stamped "S. J. Co."

Other Ties Are As Noted.