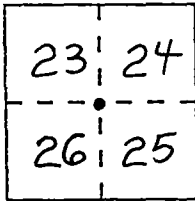


CORNER RECORD

Document Number CR-98-16

City of _____ County of San Joaquin, California

Brief Legal Description N.W. Corner Section 25, T.2S., R.7E., M.D.B. & M.



CORNER TYPE

COORDINATES
(Optional)

Government Corner Control
 Meander Property
 Rancho Other
 Date of Survey 6-15-98

N. _____
 E. _____
 Zone _____ Datum _____
 Elev. _____

T.2S., R.7E. M.D.B. & M.

Corner — Left as found Found and tagged Established Reestablished Rebuilt

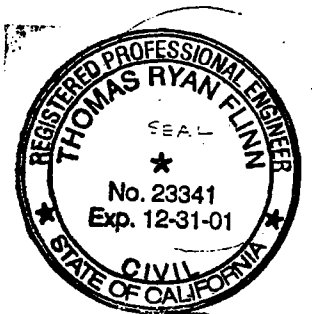
Identification and type of corner found: Evidence used to identify or procedure used to establish or reestablish the corner: Fd. Bolt & Washer In Mon. Box. F.B. 480, P. 74 Describes The Section Corner To Be A R.R. Spike Set Over A Bolt & Washer 18" Below The Surface. ^{Without Mon. Box.} No Attempt Was Made To Verify That The Fd. Monument Is The Section Corner.

A description of the physical condition of the monument as found and as set or reset: The Monument Was In Good Condition & Was Left As Found. Set 3 reference points

SURVEYOR'S STATEMENT

This Corner Record was prepared by me or under my direction in conformance with the Land Surveyors' Act on JULY 22, 1998.

Signed [Signature] L.S. or R.C.E. Number 23341



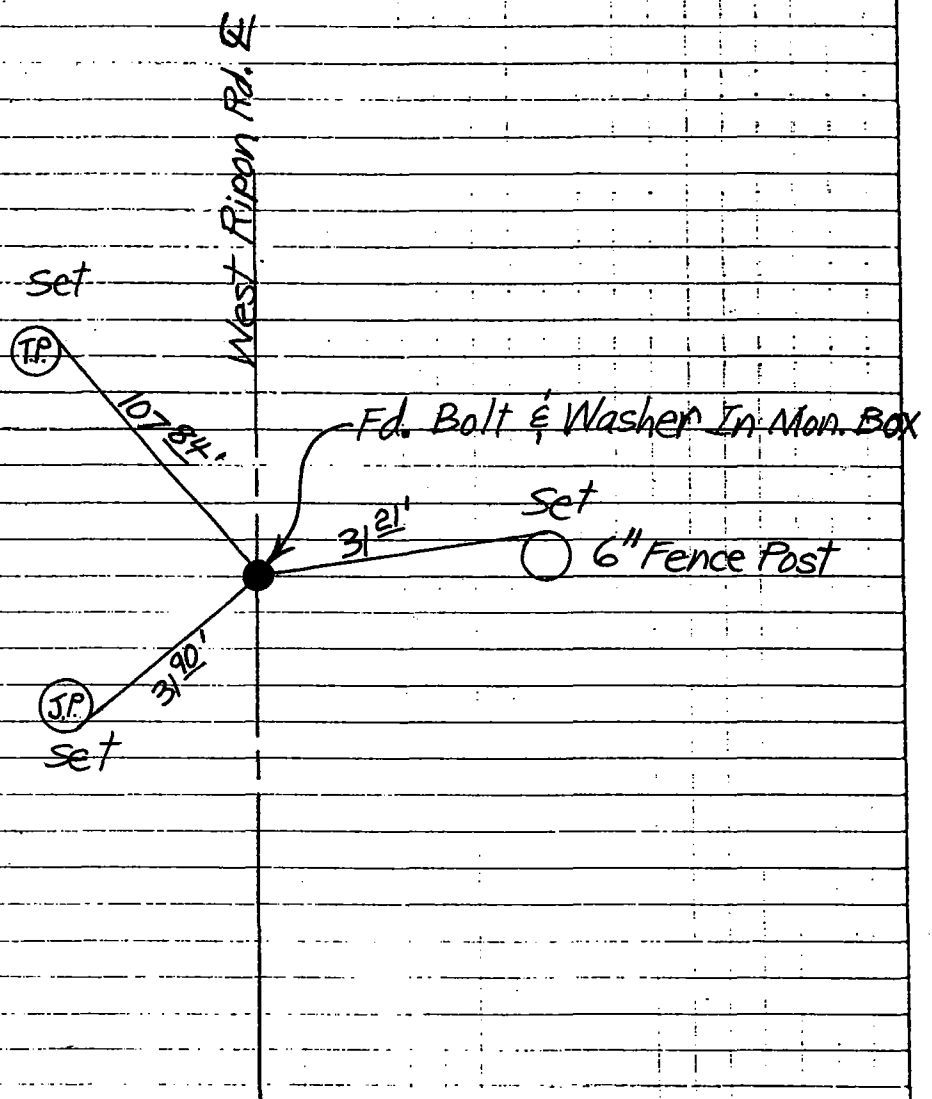
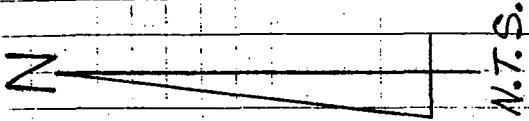
COUNTY SURVEYOR'S STATEMENT

This Corner Record was received AUGUST 14, 1998 and examined and filed SEPTEMBER 8, 1998.

Signed Henry M. Hirata Title COUNTY SURVEYOR



County Surveyor's Comment _____



Note: Set Monuments Are concrete Nails & Washers Stamped "S.J.Co."