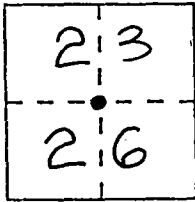


CORNER RECORD

Document Number CR-98-14

City of _____ County of SAN JOAQUIN, California

Brief Legal Description North Quarter Corner of section 26, T.2S., R.7E., M.D.B. & M.



CORNER TYPE

COORDINATES (Optional)

Government Corner Control
 Meander Property
 Rancho Other
 Date of Survey 6-15-98

N. _____
 E. _____
 Zone _____ Datum _____
 Elev. _____

T.2S., R.7E. M.D.B. & M.

Corner - Left as found Found and tagged Established Reestablished Rebuilt

Identification and type of corner found: Evidence used to identify or procedure used to establish or reestablish the corner: Fd. 3/4" I. Pin In Monument Box. F.B. 480, Pg. 73 Describes Similar Monument Without Mon. Box. No Attempt Was Made To Verify That The Fd. Monument Is The 1/4 Section Corner.

A description of the physical condition of the monument as found and as set or reset: The Monument Was In Good Condition & Was Left As Found. Set 3 new reference points

SURVEYOR'S STATEMENT

This Corner Record was prepared by me or under my direction in conformance with the Land Surveyors' Act on JULY 22, 1998.

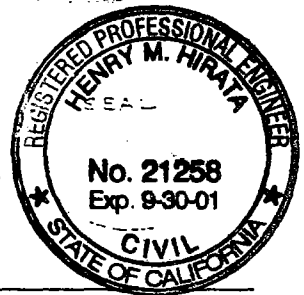
Signed _____ L.S. or R.C.E. Number 23341



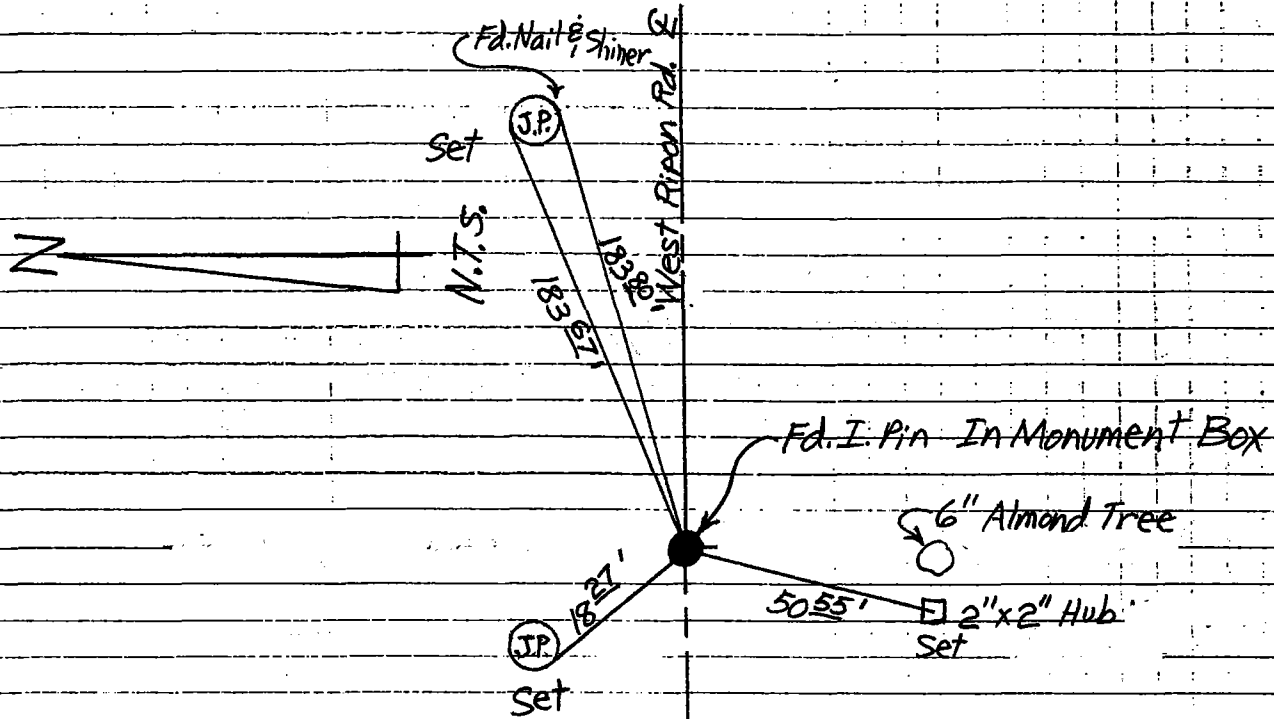
COUNTY SURVEYOR'S STATEMENT

This Corner Record was received AUGUST 14, 1998 and examined and filed SEPTEMBER 8, 1998.

Signed Henry M. Hirata Title COUNTY SURVEYOR



County Surveyor's Comment _____



Note: Set Monuments Are Concrete Nails & Washers Stamped
 "S. J. Co."
 Fd. Monuments Are As Described