

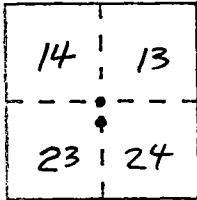
CORNER RECORD

Document Number CR-98-11

City of \_\_\_\_\_

County of San Joaquin, California

Brief Legal Description N/W Cor. Sec. 24, T.2N., R.9E., M.D.B. & M. E 2nd Corner  
17' South



CORNER TYPE

Government Corner  Control   
 Meander  Property   
 Rancho  Other   
 Date of Survey 9-29-97

COORDINATES  
(Optional)

N. \_\_\_\_\_  
 E. \_\_\_\_\_  
 Zone \_\_\_\_\_ Datum \_\_\_\_\_  
 Elev. \_\_\_\_\_

T.2N., R.9E.

Corner - Left as found  Found and tagged  Established  Reestablished  Rebuilt

Identification and type of corner found: Evidence used to identify or procedure used to establish or reestablish the corner: N/W Cor. Sec. 24, T.2N., R.9E., M.D.B. & M. Fd 2" x 2" Hub W/Jack Per F.B. 624, Pg. 71 & F.B. 253, Pg. 54 & F.B. 500.1, Pg. 71.

No Tag @

Fd. 3/4" I. Pin ^ & Flood Rd. 17' S. of N/W Cor. Sec. 24 (See F.B. 624, Pg. 71)  
(& F.B. 500.1, Pg. 71)

A description of the physical condition of the monument as found and as set or reset: \_\_\_\_\_

SURVEYOR'S STATEMENT

This Corner Record was prepared by me or under my direction in conformance with the Land Surveyors' Act on January 29, 1998.

Signed [Signature] L.S. or R.C.E. Number 25341



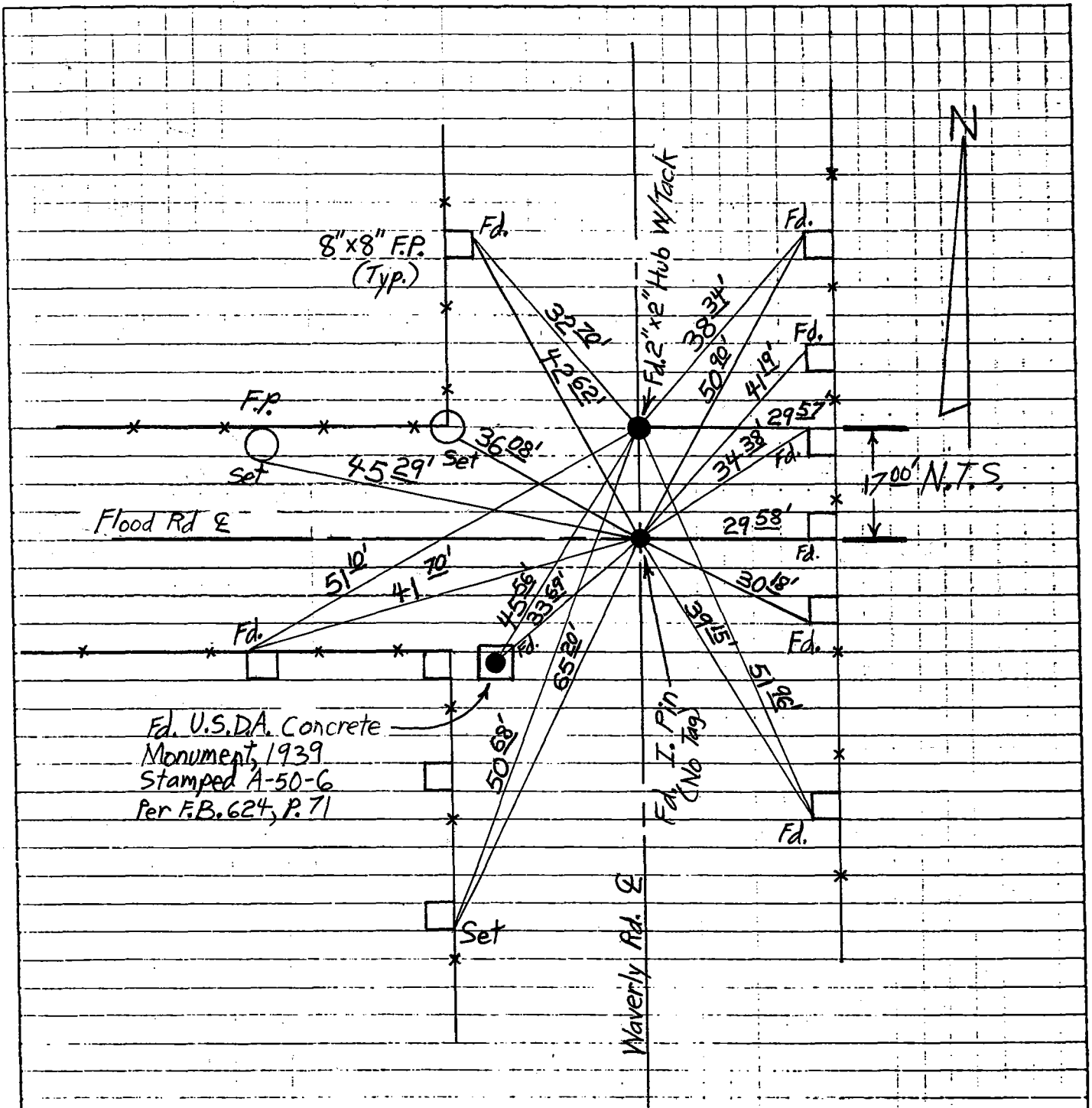
COUNTY SURVEYOR'S STATEMENT

This Corner Record was received June 16, 1998 and examined and filed July 1, 1998.

Signed Henry M. Hirata Title COUNTY SURVEYOR



County Surveyor's Comment \_\_\_\_\_



Note: New Ties Are P.K.'s And Washers Stamped "S.J. Co." Unless Otherwise Noted.  
 "Fd." Ties Are Nail & Shiners Unless Otherwise Noted.

F.P. : Fence Post