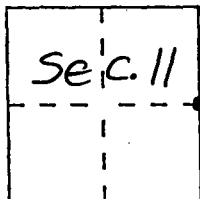


CORNER RECORD

Document Number CR-98-10

City of \_\_\_\_\_ County of San Joaquin, California

Brief Legal Description E 1/4 Cor. Sec. 11, T.2N., R.9E., M.D.B. & M.



T.2N., R.9E.

CORNER TYPE

Government Corner  Control   
 Meander  Property   
 Rancho  Other   
 Date of Survey 9-29-97

COORDINATES (Optional)

N. \_\_\_\_\_  
 E. \_\_\_\_\_  
 Zone \_\_\_\_\_ Datum \_\_\_\_\_  
 Elev. \_\_\_\_\_

Corner - Left as found  Found and tagged  Established  Reestablished  Rebuilt

Identification and type of corner found: Evidence used to identify or procedure used to establish or reestablish the corner: E. 1/4 Cor. Sec. 11, T.2N., R.9E., M.D.B. & M. Fd. 5/8" Iron Pin (No Tag) on E of Waverly Rd. [Noted As 5/8" Rebar Tagged L.S. 4222 Per R.S. 32-174]

A description of the physical condition of the monument as found and as set or reset: Fd. 5/8" Iron Pin (No Tag) On Surface Per R.S. 32-174 (see Comment Above)

SURVEYOR'S STATEMENT

This Corner Record was prepared by me or under my direction in conformance with the Land Surveyors Act on JANUARY 29, 1998.

Signed [Signature] L.S. or R.C.E. Number 23341



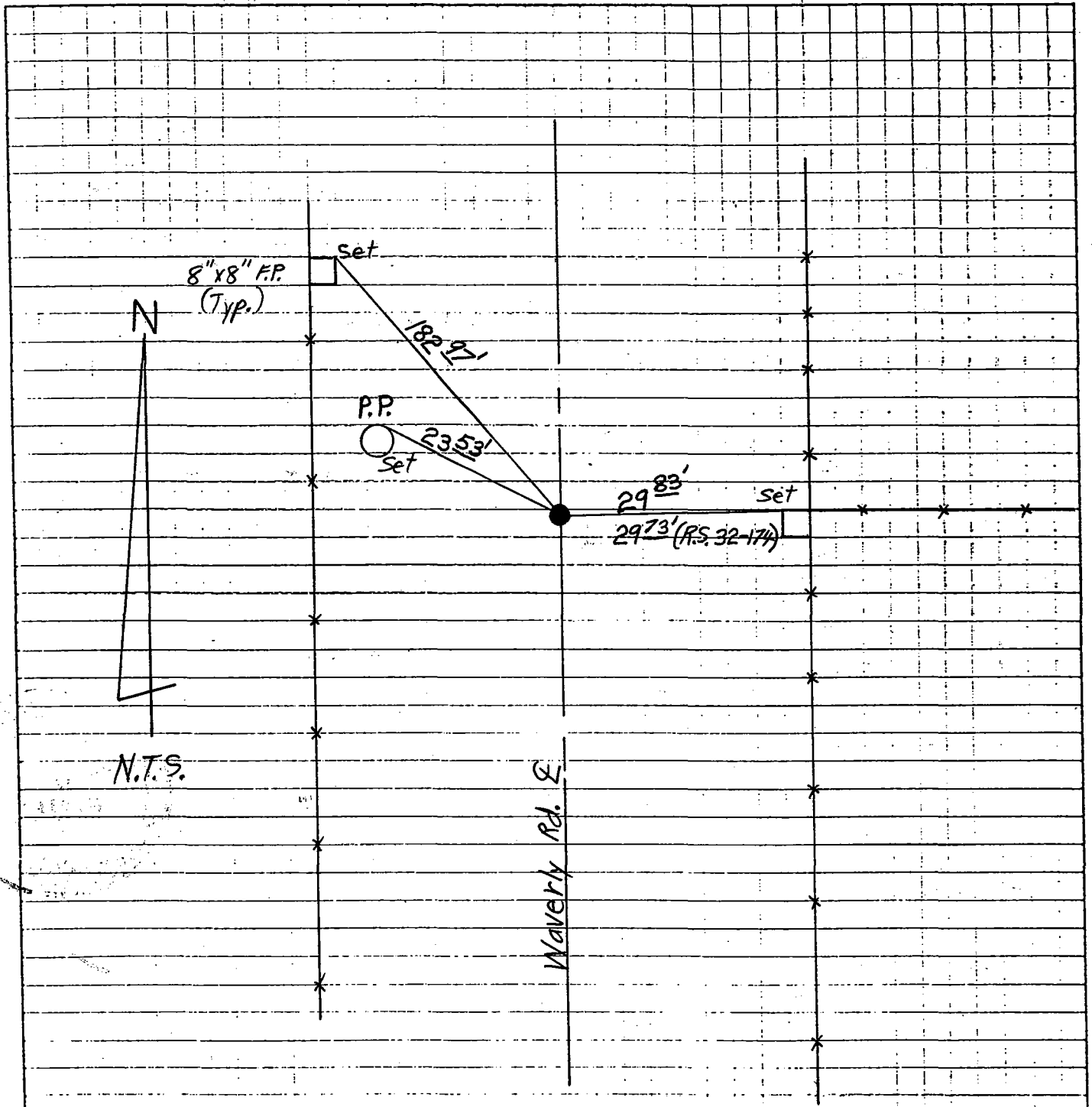
COUNTY SURVEYOR'S STATEMENT

This Corner Record was received JUNE 4, 1998 and examined and filed June 15, 1998.

Signed Henry M. Hirata Title COUNTY SURVEYOR



County Surveyor's Comment \_\_\_\_\_



Note: New Ties Are P.K.'s And Washers Stamped "S.J. Co." Unless Otherwise Noted.  
 "Fd." Ties Are Nail & Shiners Unless Otherwise Noted.

F.P. : Fence Post