

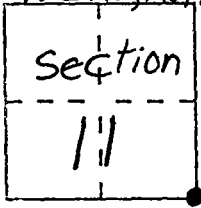
CORNER RECORD

Document Number CR-98-09

City of \_\_\_\_\_ County of San Joaquin, California

Brief Legal Description S/E Cor. Sec. 11, T.2N., R.9E., M.D.B. & M.

T.2N., R.9E.



CORNER TYPE

Government Corner  Control   
 Meander  Property   
 Rancho  Other   
 Date of Survey 9-29-97

COORDINATES  
(Optional)

N. \_\_\_\_\_  
 E. \_\_\_\_\_  
 Zone \_\_\_\_\_ Datum \_\_\_\_\_  
 Elev. \_\_\_\_\_

Corner — Left as found  Found and tagged  Established  Reestablished  Rebuilt

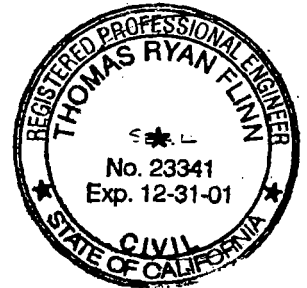
Identification and type of corner found: Evidence used to identify or procedure used to establish or reestablish the corner: S/E Cor. Sec. 11, T.2N., R.9E., M.D.B. & M. Fd. 2" x 2" Hub Per R.S. 32-174

A description of the physical condition of the monument as found and as set or reset: Fd. 2" x 2" Hub Per R.S. 32-174

SURVEYOR'S STATEMENT

This Corner Record was prepared by me or under my direction in conformance with the Land Surveyors' Act on JANUARY 29, 1998.

Signed [Signature] L.S. or R.C.E. Number 23341



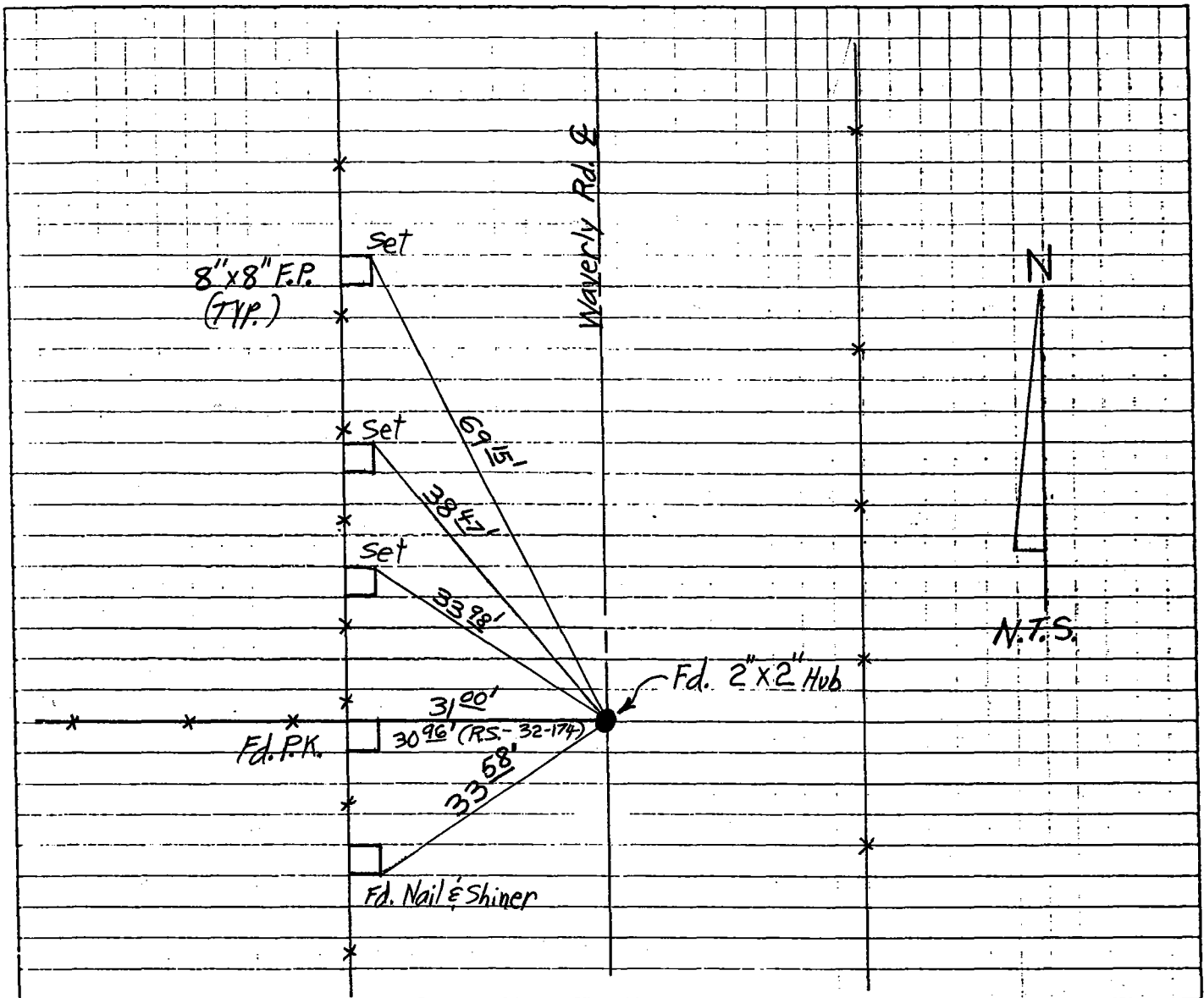
COUNTY SURVEYOR'S STATEMENT

This Corner Record was received JUNE 4, 1998 and examined and filed JUNE 15, 1998.

Signed Henry M Hirata Title COUNTY SURVEYOR



County Surveyor's Comment \_\_\_\_\_



Note: New Ties Are P.K.'s And  
 Washers Stamped "S.J. Co."  
 Unless Otherwise Noted.  
 "Fd." Ties Are Nail & Shiners  
 Unless Otherwise Noted.

F.P. : Fence Post