

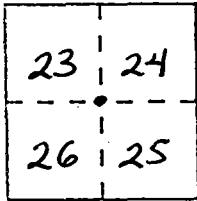
CORNER RECORD

Document Number CR-98-08

City of _____

County of San Joaquin, California

Brief Legal Description SW Cor. Sec. 24, T.2N., R.9E., M.D.B. & M.



CORNER TYPE

COORDINATES

(Optional)

Government Corner Control
 Meander Property
 Rancho Other
 Date of Survey 9-29-97

N. _____
 E. _____
 Zone _____ Datum _____
 Elev. _____

T.2N., R.9E.

Corner - Left as found Found and tagged Established Reestablished Rebuilt

Identification and type of corner found: Evidence used to identify or procedure used to establish or reestablish the corner: _____

Fd. 3/4" I. pipe w/ plastic cap (No Number Or Record) Point is ^{projection of} on clearly marked fence line per F.B. 253, Pg. 54 which calls for a 2x2" hub w/ tack. (Also see F.B. 247, Pg. 35.)

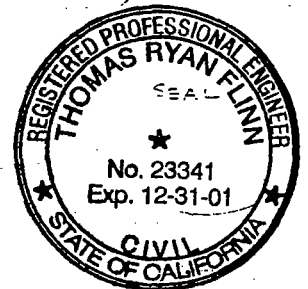
Note: No Attempt Has Been Made To Establish Whether OR Not The Monument IS A Section Corner.

A description of the physical condition of the monument as found and as set or reset: 3/4" I. Pipe On Surface. Slightly Bent With Worn Yellow Plastic Cap. No Number Or Record.

SURVEYOR'S STATEMENT

This Corner Record was prepared by me or under my direction in conformance with the Land Surveyors' Act on JANUARY 29, 19 98.

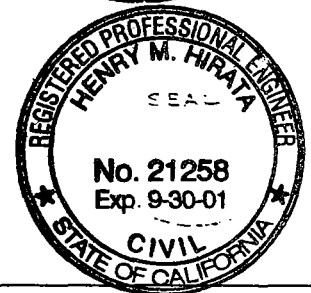
Signed _____ L.S. or R.C.E. Number 25341



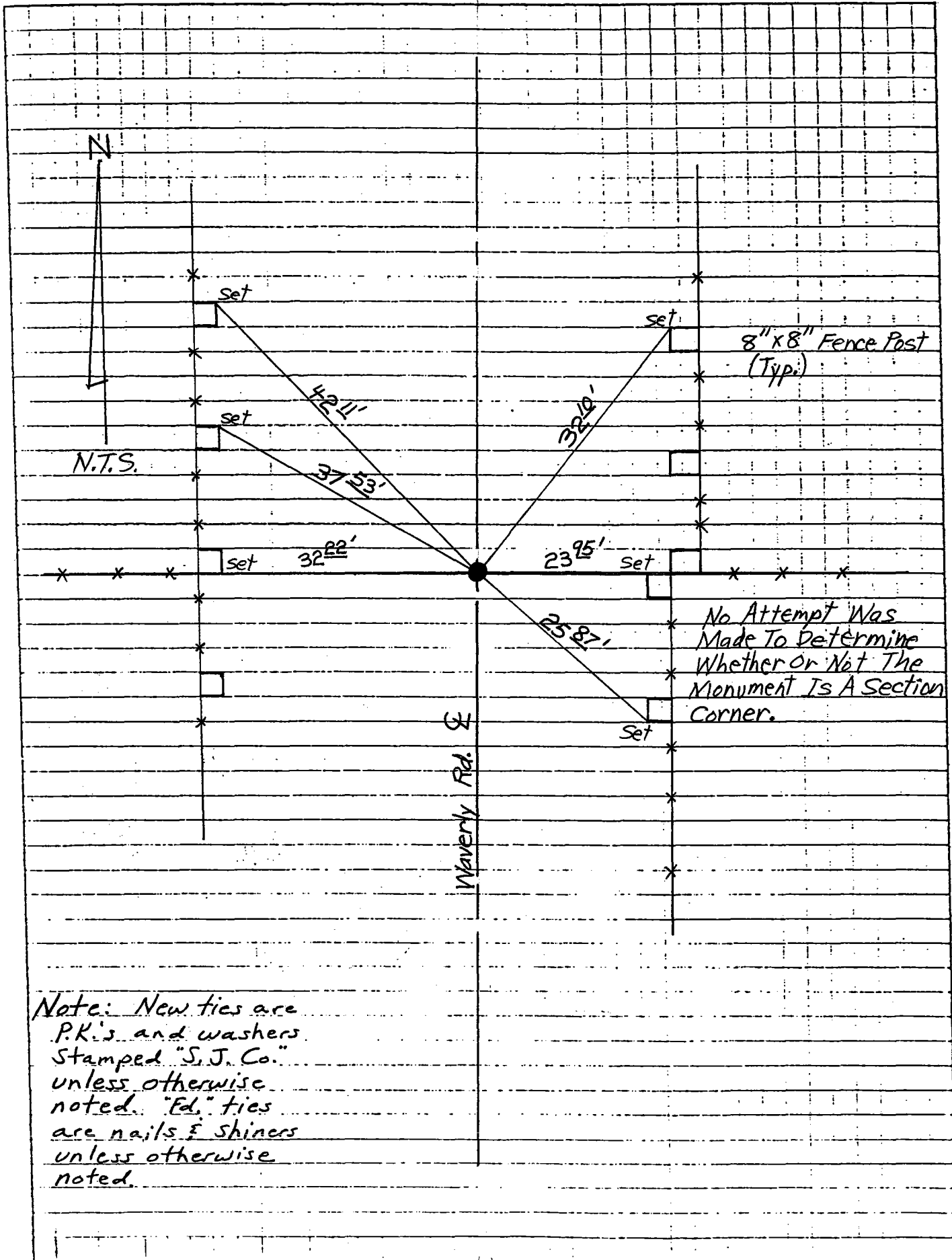
COUNTY SURVEYOR'S STATEMENT

This Corner Record was received June 4, 19 98 and examined and filed June 15, 19 98.

Signed Henry M. Hirata Title COUNTY SURVEYOR



County Surveyor's Comment _____



N.T.S.

8" x 8" Fence Post
(Typ.)

No Attempt Was
Made To Determine
Whether Or Not The
Monument Is A Section
Corner.

Waverly Rd. E

Note: New ties are
P.K.'s and washers
stamped "S.J. Co."
unless otherwise
noted. "Ed." ties
are nails & shiners
unless otherwise
noted.