

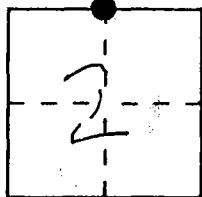
**CORNER RECORD**

Document Number CR-98-06

City of \_\_\_\_\_

County of SAN JOAQUIN, California

Brief Legal Description N. 1/4 COR. SECTION 2, T.2S., R.7E., M.D.B. & M. PER RS. 11-58



**CORNER TYPE**

Government Corner  Control   
Meander  Property   
Rancho  Other   
Date of Survey 4-6-98

**COORDINATES**

(Optional)

N. \_\_\_\_\_  
E. \_\_\_\_\_  
Zone \_\_\_\_\_ Datum \_\_\_\_\_  
Elev. \_\_\_\_\_

Corner - Left as found  Found and tagged  Established  Reestablished  Rebuilt

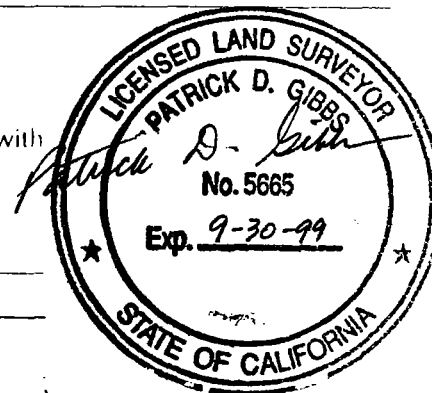
Identification and type of corner found: Evidence used to identify or procedure used to establish or reestablish the corner: FOUND BOLT AND WASHER, NO TAG, DOWN 0.050 METERS FROM THE ASPHALT SURFACE NEAR CENTERLINE OF HWY. 120 AT HART LANE (A PRIVATE ROAD)

A description of the physical condition of the monument as found and as set or reset: FOUND IN GOOD CONDITION. THE MONUMENT IS PLANNED TO BE PRESERVED DURING CONSTRUCTION. THE REFERENCE POINTS WERE SET IN CASE THE MONUMENT IS ACCIDENTLY DISTURBED.

**SURVEYOR'S STATEMENT**

This Corner Record was prepared by me or under my direction in conformance with the Land Surveyors' Act on 4-7- 1998.

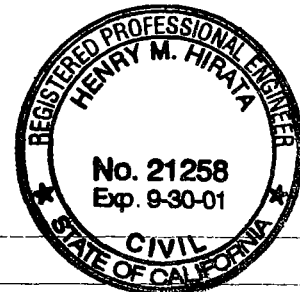
Signed Patrick D. Gibbs L.S. or P.C.E. Number 5665 Expires 9-30-99



**COUNTY SURVEYOR'S STATEMENT**

This Corner Record was received April 23, 1998 and examined and filed May 6, 1998.

Signed Henry M. Hirata Title COUNTY SURVEYOR



County Surveyor's Comment \_\_\_\_\_

EA 0A1103

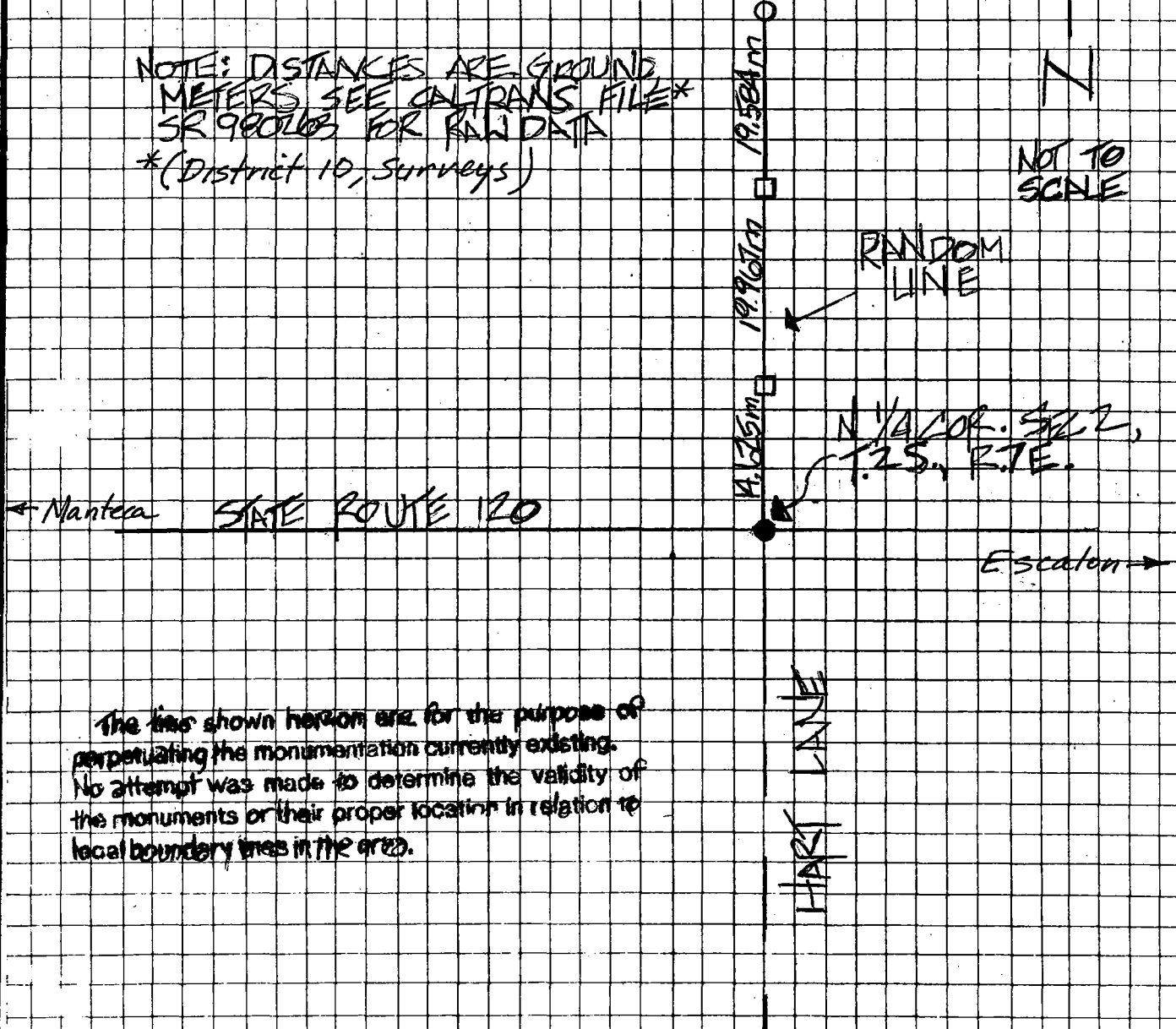
980263

- FOUND BOLT AND WASHER NO TAG  
DOWN 0.050 METERS PER RS 11-58
- SET H&T WITH CALTRANS TAG
- SET SPIKE WITH CALTRANS TAG

NOTE: DISTANCES ARE GROUND METERS SEE CALTRANS FILE\*  
SR 990003 FOR RAW DATA  
\*(District 10, Surveys)



NOT TO SCALE



The line shown hereon are for the purpose of perpetuating the monumentation currently existing. No attempt was made to determine the validity of the monuments or their proper location in relation to local boundary lines in the area.