

CORNER RECORD

Document Number CR-97-47

City of TRACY

County of SAN JOAQUIN, California

Brief Legal Description SECTION CORNER COMMON TO SECTIONS 19, 20 AND RANCHO EL PESCADERO GRANT LINE, T.2S., R.5E., M.D.M.



CORNER TYPE

- Government Corner
- Meander
- Rancho
- Date of Survey 3/28/96
- Control
- Property
- Other

COORDINATES (Optional)

N. _____
 E. _____
 Zone _____ Datum _____
 Elev. _____

T.2S., R.5E.

(SET MON. STRADDLERS)

Corner - Left as found Found and tagged Established Reestablished Rebuilt

Identification and type of corner found: Evidence used to identify or procedure used to establish or reestablish the corner: AS A SUBCONTRACTOR FOR GRANITE CONST. CO., I REFERENCED OUT THE EXISTING MONUMENT (R.R. SPIKE) PRIOR TO ROADWAY RECONSTRUCTION (6-30-94). FROM REFERENCE POINTS, I SET MONUMENT STRADDLERS FOR MONUMENT REPLACEMENT BY GRANITE CONSTRUCTION. I PUNCHED MONUMENT POSITION ON BRASS DISC MONUMENT ON 7-12-96. (SEE SKETCH)

A description of the physical condition of the monument as found and as set or reset: FOUND RAILROAD SPIKE ACCEPTED AS SECTION CORNER PER R.S. 10-218, R.S. 11-30, R.S. 17-93, R.S. 29-97, R.S. 30-60, R.M. 5-32, R.M. 5-79, R.M. 15-52 AND M.P. 29-9. REFERENCED OUT ON 6-30-94. SET MON. STRADDLERS (P.K. NAILS) ON PAVEMENT FOR MON. REPLACEMENT ON 3-28-96. MONUMENT WAS REPLACED BY A STANDARD CITY OF TRACY STREET MONUMENT & WELL BY GRANITE CONST. CO. AND PUNCHED ON 7-12-96.

SURVEYOR'S STATEMENT

This Corner Record was prepared by me or under my direction in conformance with the Land Surveyors' Act on DECEMBER 30, 19 97.

Signed [Signature] L.S. ~~_____~~ Number 4233



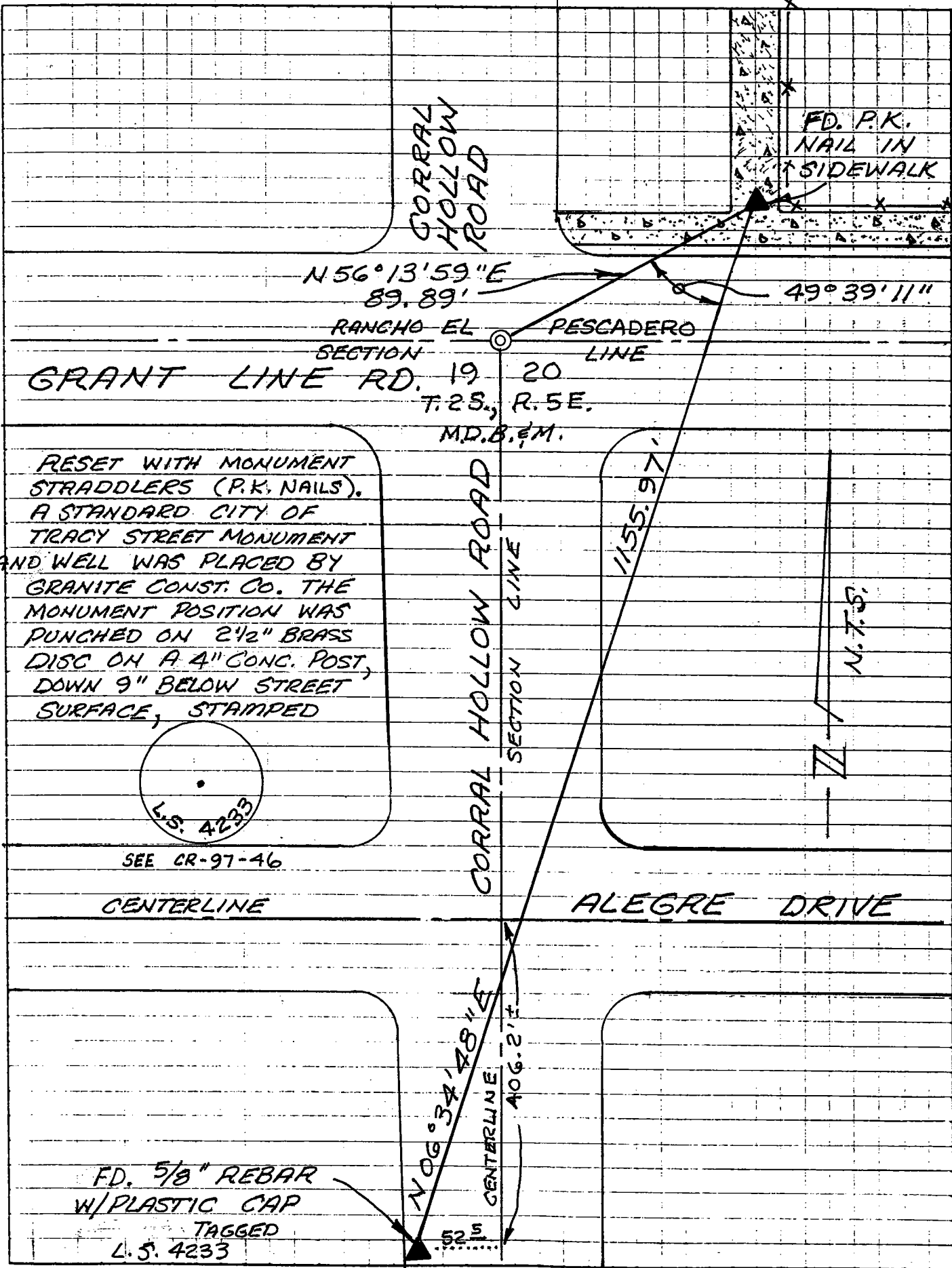
COUNTY SURVEYOR'S STATEMENT

This Corner Record was received February 11, 19 98 and examined and filed February 20, 19 98.

Signed Henry M. Hirata Title COUNTY SURVEYOR



County Surveyor's Comment _____



CORRAL HOLLOW ROAD

FD. P.K. NAIL IN SIDEWALK

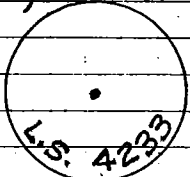
N56°13'59"E
89.89'

49°39'11"

RANCHO EL PESCADERO SECTION LINE

GRANT LINE RD. 19 20
T.2S., R.5E.
MD.8.6M.

RESET WITH MONUMENT STRADDLERS (P.K. NAILS). A STANDARD CITY OF TRACY STREET MONUMENT AND WELL WAS PLACED BY GRANITE CONST. CO. THE MONUMENT POSITION WAS PUNCHED ON 2 1/2" BRASS DISC ON A 4" CONC. POST, DOWN 9" BELOW STREET SURFACE, STAMPED



SEE CR-97-46

CENTERLINE

CORRAL HOLLOW ROAD SECTION LINE

1155.97'

N.T.S.

ALEGRE DRIVE

N06°34'48"E
AOG. 2.7'

FD. 5/8" REBAR W/ PLASTIC CAP TAGGED L.S. 4233